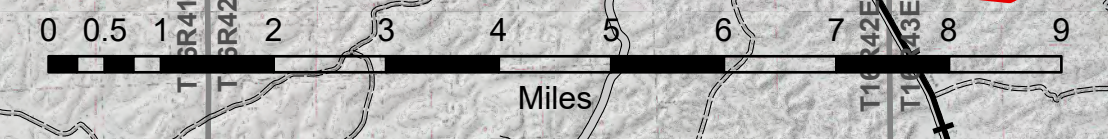
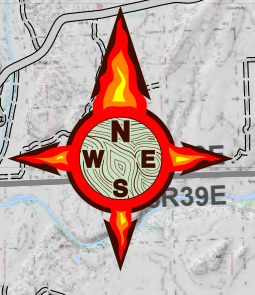
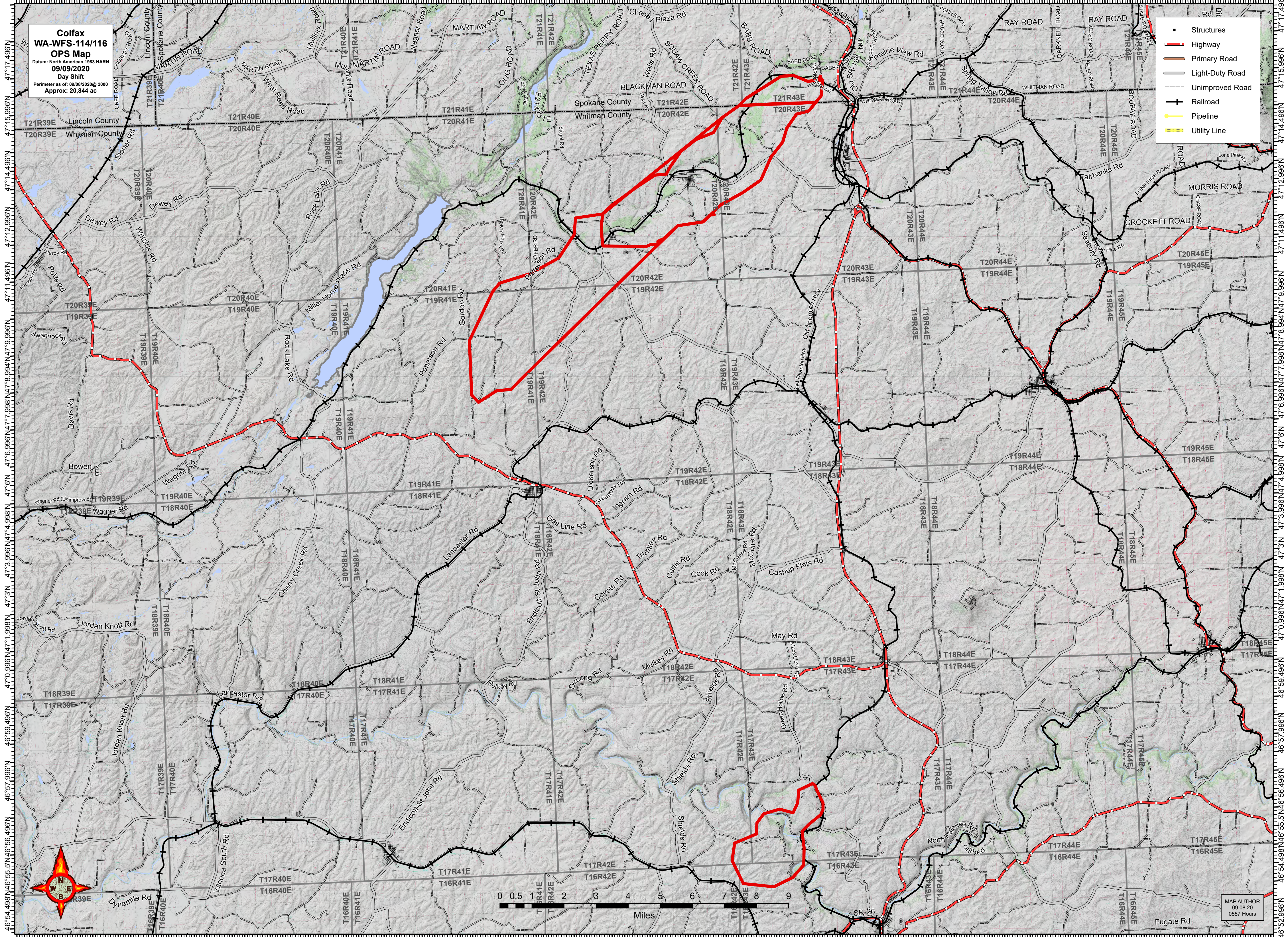


117°54.504'W 117°52.5'W 117°50.502'W 117°48.504'W 117°46.5'W 117°45'W 117°43.002'W 117°41.004'W 117°39'W 117°37.5'W 117°36'W 117°34.5'W 117°33'W 117°31.5'W 117°30'W 117°28.002'W 117°26.004'W 117°24'W 117°22.5'W 117°20.502'W 117°18.504'W 117°16.5'W 117°15'W 117°13.002'W 117°11.004'W 117°9'W 117°7.5'W 117°6.006'W

**Colfax**  
**WA-WFS-114/116**  
**OPS Map**  
Datum: North American 1983 HARN  
**09/09/2020**  
Day Shift  
Perimeter as of: 09/08/2020 @ 2000  
Approx: 20,844 ac

- Structures
- Highway
- Primary Road
- Light-Duty Road
- Unimproved Road
- Railroad
- Pipeline
- Utility Line



MAP AUTHOR  
09 08 20  
0557 Hours

117°56.004'W 117°54'W 117°52.5'W 117°50.502'W 117°48.504'W 117°46.5'W 117°45'W 117°43.002'W 117°41.004'W 117°39'W 117°37.5'W 117°36'W 117°34.5'W 117°33'W 117°31.5'W 117°30'W 117°28.002'W 117°26.004'W 117°24'W 117°22.5'W 117°20.502'W 117°18.504'W 117°16.5'W 117°15'W 117°13.002'W 117°11.004'W 117°9'W 117°7.5'W