

120°56'W 120°55'W 120°54'W 120°53'W 120°52'W 120°51'W 120°50'W 120°49'W 120°48'W 120°47'W 120°46'W 120°45'W 120°44'W 120°43'W 120°42'W 120°41'W 120°40'W 120°39'W 120°38'W 120°37'W 120°36'W 120°35'W 120°34'W 120°33'W 120°32'W 120°31'W 120°30'W 120°29'W 120°28'W 120°27'W 120°26'W 120°25'W 120°24'W 120°23'W 120°22'W

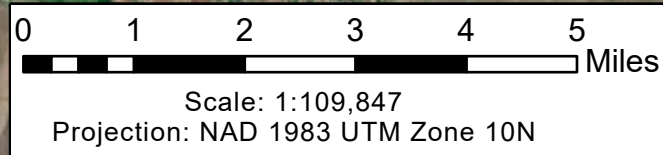
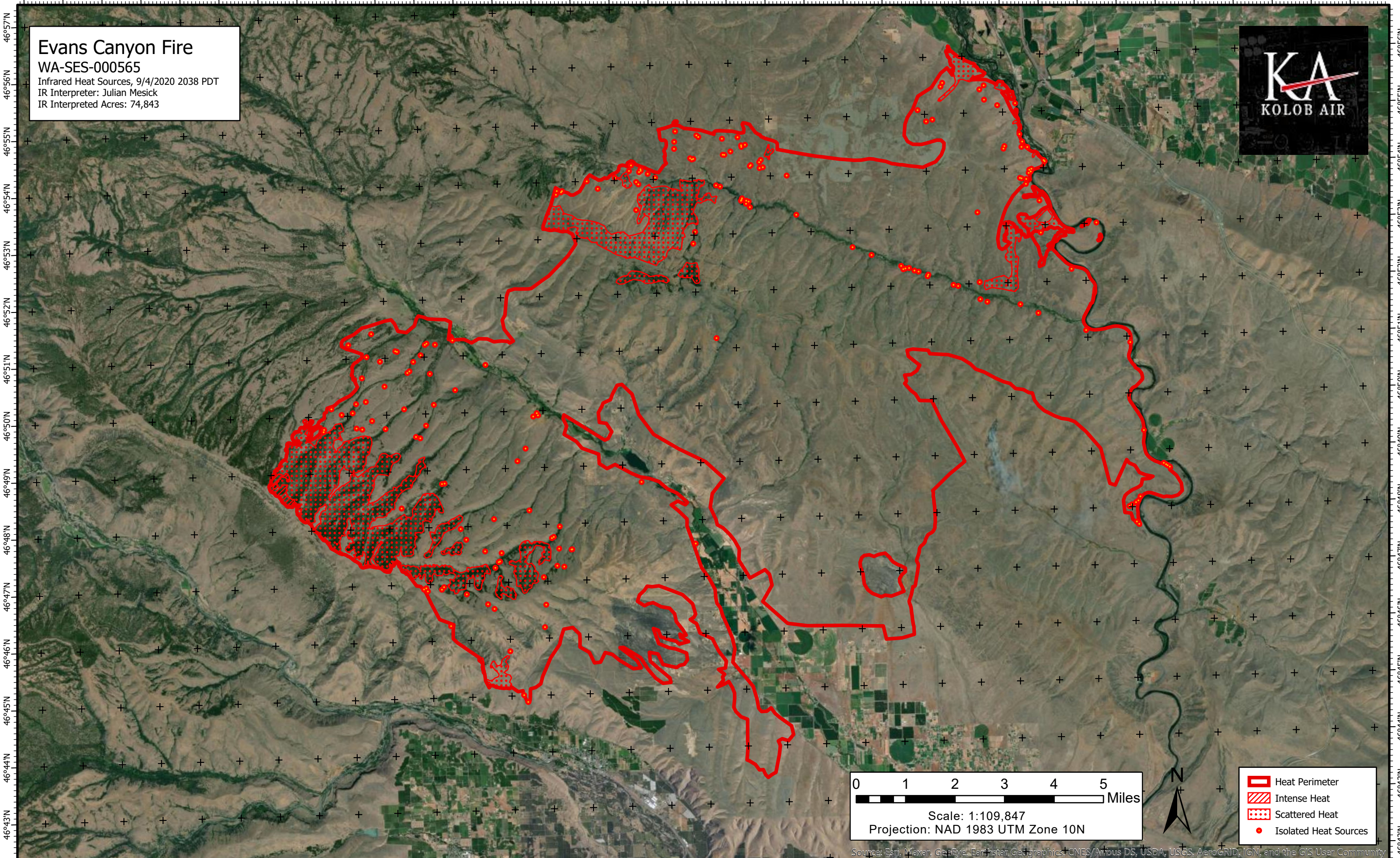
Evans Canyon Fire





WA-SES-000565

Infrared Heat Sources, 9/4/2020 2038 PDT

IR Interpreter: Julian Mesick

IR Interpreted Acres: 74,843



-  Heat Perimeter
-  Intense Heat
-  Scattered Heat
-  Isolated Heat Sources

120°56'W 120°55'W 120°54'W 120°53'W 120°52'W 120°51'W 120°50'W 120°49'W 120°48'W 120°47'W 120°46'W 120°45'W 120°44'W 120°43'W 120°42'W 120°41'W 120°40'W 120°39'W 120°38'W 120°37'W 120°36'W 120°35'W 120°34'W 120°33'W 120°32'W 120°31'W 120°30'W 120°29'W 120°28'W 120°27'W 120°26'W 120°25'W 120°24'W 120°23'W 120°22'W

Source: Esri, Maxar, GeoEye, Earthstar Geographics, CNES/Airbus DS, USDA, USGS, AeroGRID, IGN, and the GIS User Community