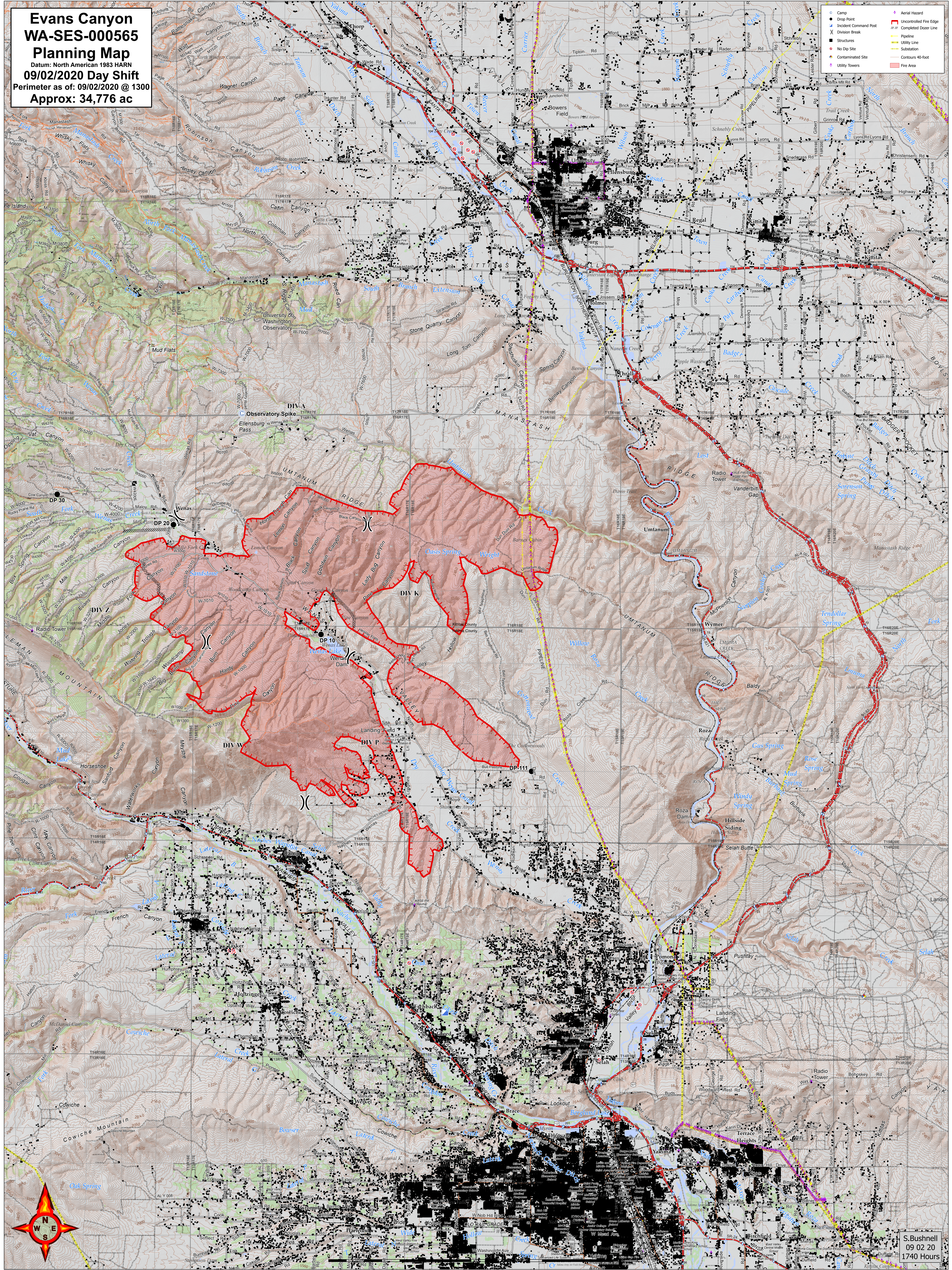


**Evans Canyon
WA-SES-000565
Planning Map**
Datum: North American 1983 HARN
09/02/2020 Day Shift
Perimeter as of: 09/02/2020 @ 1300
Approx: 34,776 ac

- Camp
- Drop Point
- ▲ Incident Command Post
- Division Break
- Structures
- No Dip Site
- Contaminated Site
- Utility Towers
- ▲ Aerial Hazard
- ▬ Uncollected Fire Edge
- ▬ Completed Doser Line
- ▬ Pipeline
- ▬ Utility Line
- ▬ Substation
- ▬ Contours 40-foot
- ▬ Fire Area



S. Bushnell
09 02 20
1740 Hours