

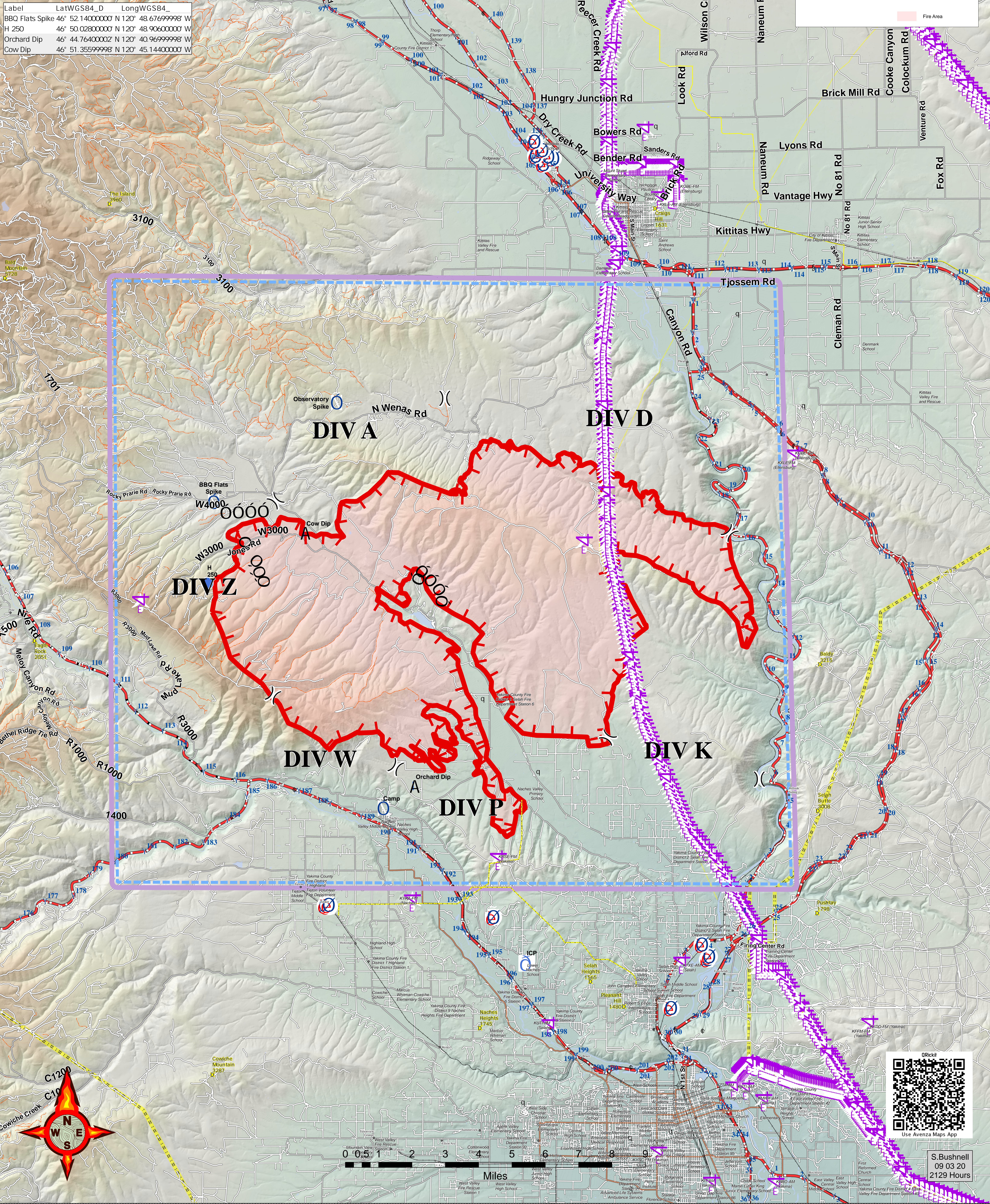
# Evans Canyon WA-SES-000565 AirOps Map

09/04/2020 Day Shift  
Perimeter as of: 09/03/2020 @ 1130  
Approx: 57,550 ac

Label	LatWGS84_D	LongWGS84_
BBQ Flats Spike	46° 52.14000000' N	120° 48.67699998' W
H 250	46° 50.02800000' N	120° 48.90600000' W
Orchard Dip	46° 44.76400002' N	120° 40.96999998' W
Cow Dip	46° 51.35599998' N	120° 45.14400000' W

TFR 0/3583 (8,000 MSL)

- Aerial Hazard
- Camp
- Dip Site
- Helispot
- ICP
- Division Break
- Structures
- Radio Towers
- No Dip Site
- Uncontrolled Fire Edge
- Completed Dozer Line
- Pipeline
- Utility Line
- Substation
- Fire Area



S.Bushnell  
09 03 20  
2129 Hours