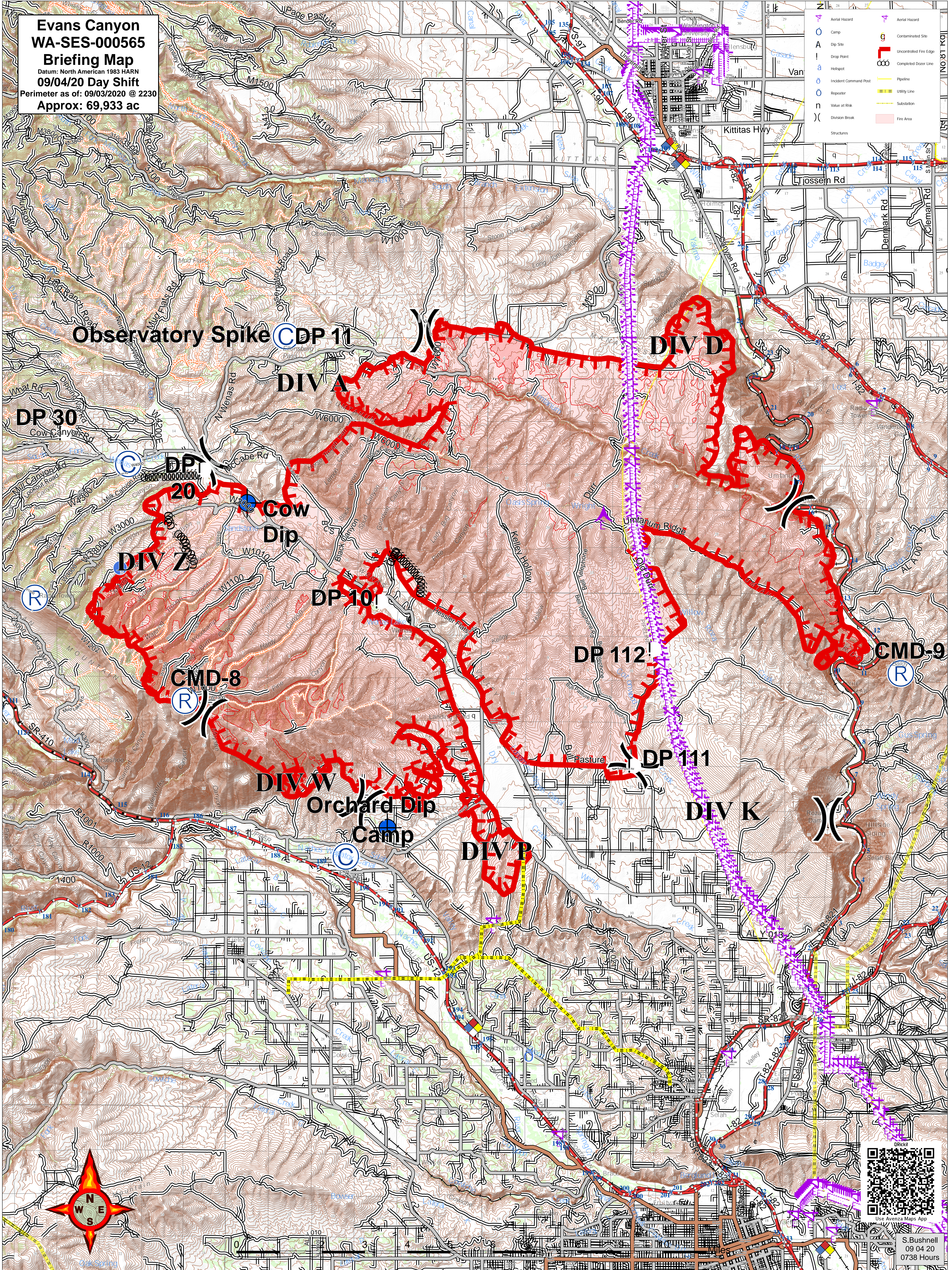


**Evans Canyon  
WA-SES-00565**

**Briefing Map**

Datum: North American 1983 HARN  
09/04/20 Day Shift  
Perimeter as of: 09/03/2020 @ 2230  
Approx: 69,933 ac

	Aerial Hazard		Aerial Hazard
	Camp		Contaminated Site
	Dip Site		Uncontrolled Fire Edge
	Drop Point		Completed Doser Line
	Helispot		Pipeline
	Incident Command Post		Utility Line
	Repeater		Substation
	Value at Risk		Fire Area
	Division Break		Structures



Observatory Spike CDP 11

DP 30  
Cow Canyon Rd

DP 20

Cow Dip

DIV Z

DP 10

CMD-8

DIV W

Orchard Dip

Camp

DIV P

DP 112

DP 111

DIV K

DIV D

CMD-9

