

Evans Canyon WA-SES-000565 IAP Map

Page 7

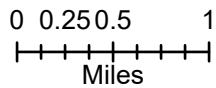
09/04/2020 Day Shift

Perimeter as of: 09/03/2020 @ 1130

Approx. 57,550 ac

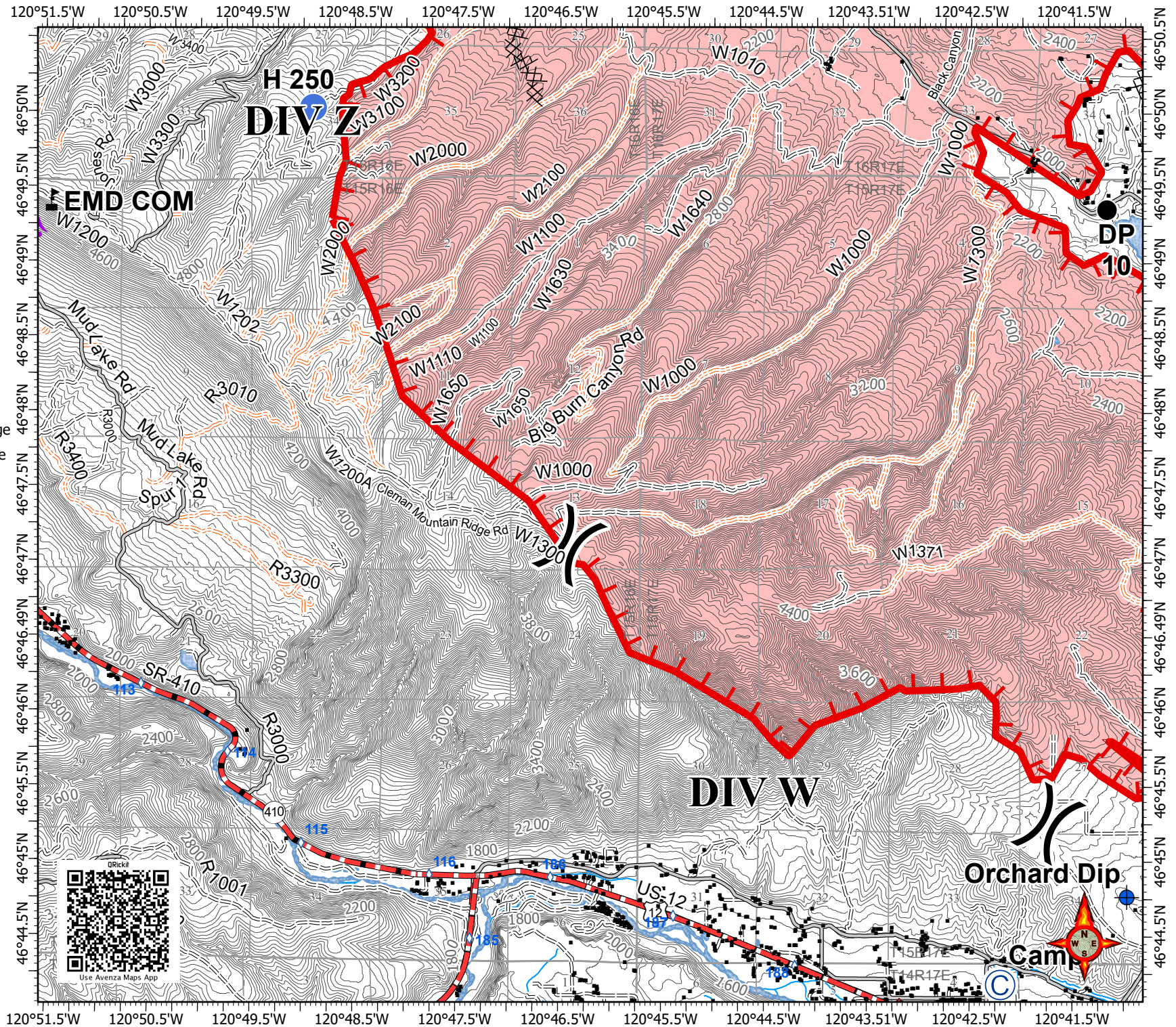
-  Camp
-  Dip Site
-  Drop Point
-  Helispot
-  Value at Risk
-  Division Break
-  Structures
-  Aerial Hazard
-  Contaminated Site
-  Uncontrolled Fire Edge
-  Completed Dozer Line
-  Highway
-  Primary Road
-  Light-Duty Road
-  Unimproved Road
-  Closed Road
-  Contours 40-foot
-  Fire Area

Page 1	Page 2	Page 3
Page 4	Page 5	Page 6
Page 7	Page 8	Page 9
Page 10	Page 11	Page 12



S. Bushnell
09 03 20
2151 Hours

Acres from GPS & IR



Use Avenza Maps App