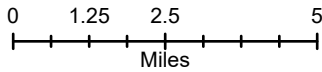


**Evans Canyon  
WA-SES-000565  
Public Information Map**

**09/04/2020 Day Shift**  
Approx: 69,933 ac

-  Fire Area
-  Highway
-  Primary Road
-  Light-Duty Road
-  Unimproved Road



**Disclaimer:**

While NW IMT12 makes every effort to represent the data shown on these maps as completely and accurately as possible, no warranty is given, expressed or implied, as to the accuracy, reliability, or completeness of these data. In addition, NW IMT12 and/or other participating agencies shall not be held liable for improper or incorrect use of the data described and/or contained herein. Graphical representations provided by the use of this data does not represent any legal description of the data herein and are provided only as a general representation of the data. No indication/statement of fire containment is given, expressed or implied by this product.

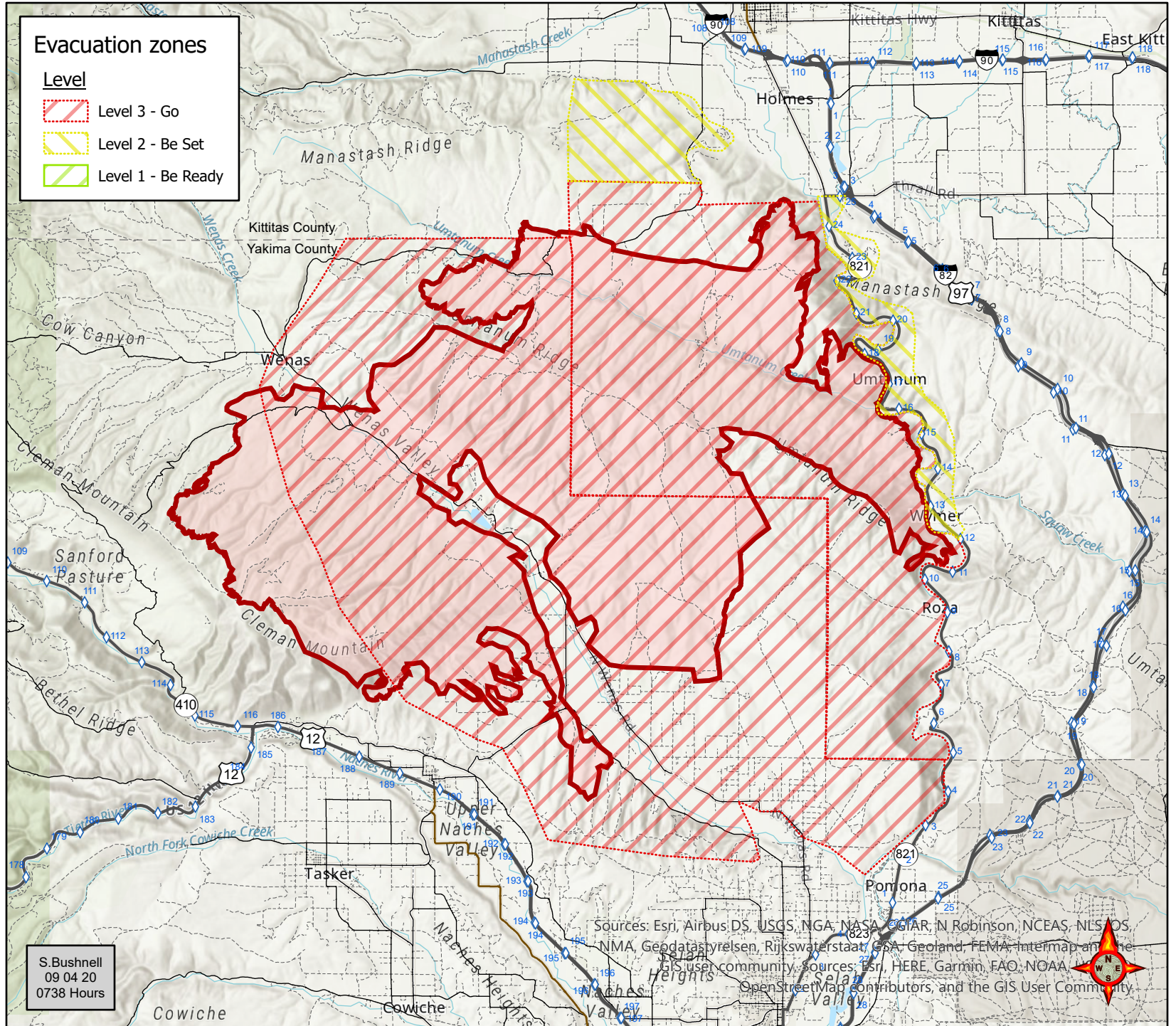
**More Information:**  
<http://inciweb.nwcg.gov>



S. Bushnell  
09 04 20  
0738 Hours

**Evacuation zones**

-  Level 3 - Go
-  Level 2 - Be Set
-  Level 1 - Be Ready



Sources: Esri, Airbus DS, USGS, NGA, NASA, CGIAR, N Robinson, NCEAS, NLS, OS, NMA, Geodatas, vresen, Rijkswaterstaat, GSA, Geoland, FEMA, Intermap and the GIS user community, sources: Esri, HERE, Garmin, FAO, NOAA, OpenStreetMap contributors, and the GIS User Community.

