

**Evans Canyon
WA-SES-000565
Structure Assessment
DIV A**

Date: North American 1983 HARN
09/05/2020 Day Shift
Perimeter as of: 09/04/20 @ 1130
Approx: 73,868 ac

Stand Alone (Low Risk)	Defensible (Moderate Risk)	Non-Defensible (High Risk)	Non-Defensible (Extreme Risk)
<ul style="list-style-type: none"> • Safety Zone present • Requires little or no attention • Will require patrol or homeowner presence after fire passage 	<ul style="list-style-type: none"> • Safety Zone present at or near structure for FF • Structure has a higher probability of ignition without FF intervention 	<ul style="list-style-type: none"> • No Safety Zone present • If time allows, rapid mitigation, apply gel or foam • Set decision point for safe retreat • Go to nearest Safety Zone; return to fire area after fire passage 	<ul style="list-style-type: none"> • No Safety Zone present • Inadequate time for mitigation • If time allows, ensure lives are not threatened • Set decision point for safe retreat • Go to nearest Safety Zone; return to fire area after fire passage

Structure Defensibility
<ul style="list-style-type: none"> • Defensible - Stand Alone • Defensible - Prep and Hold • Non-Defensible - Prep and Leave • Non-Defensible - Rescue Drive-By • Unknown

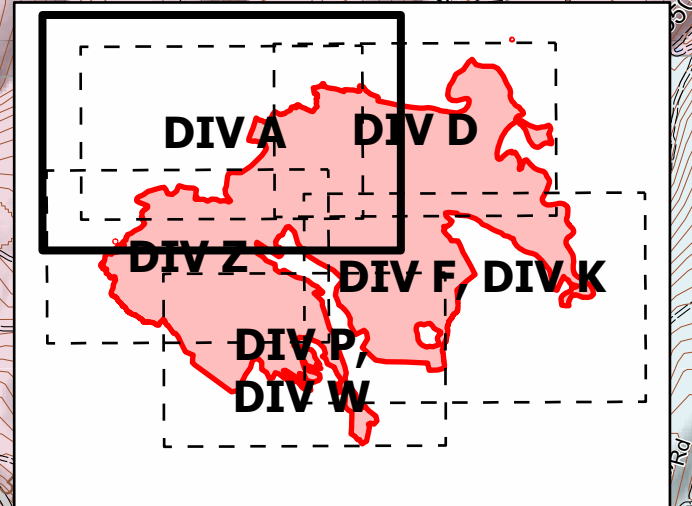
● Camp	XX XX Completed Dozer Line
● Dip Site	H Completed Hand Line
● Helispot	Fire Area
⌋ Division Break	DNR-Managed Lands
■ Structures	WA Dept of Fish and Wildlife
▬ Uncontrolled Fire Edge	Fire Protection District

**DLIFE
AREA**

WENAS WILDLIFE AREA

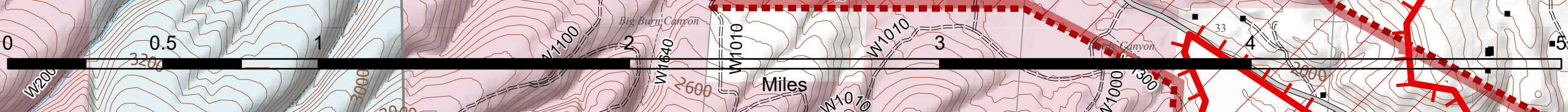
DIVA

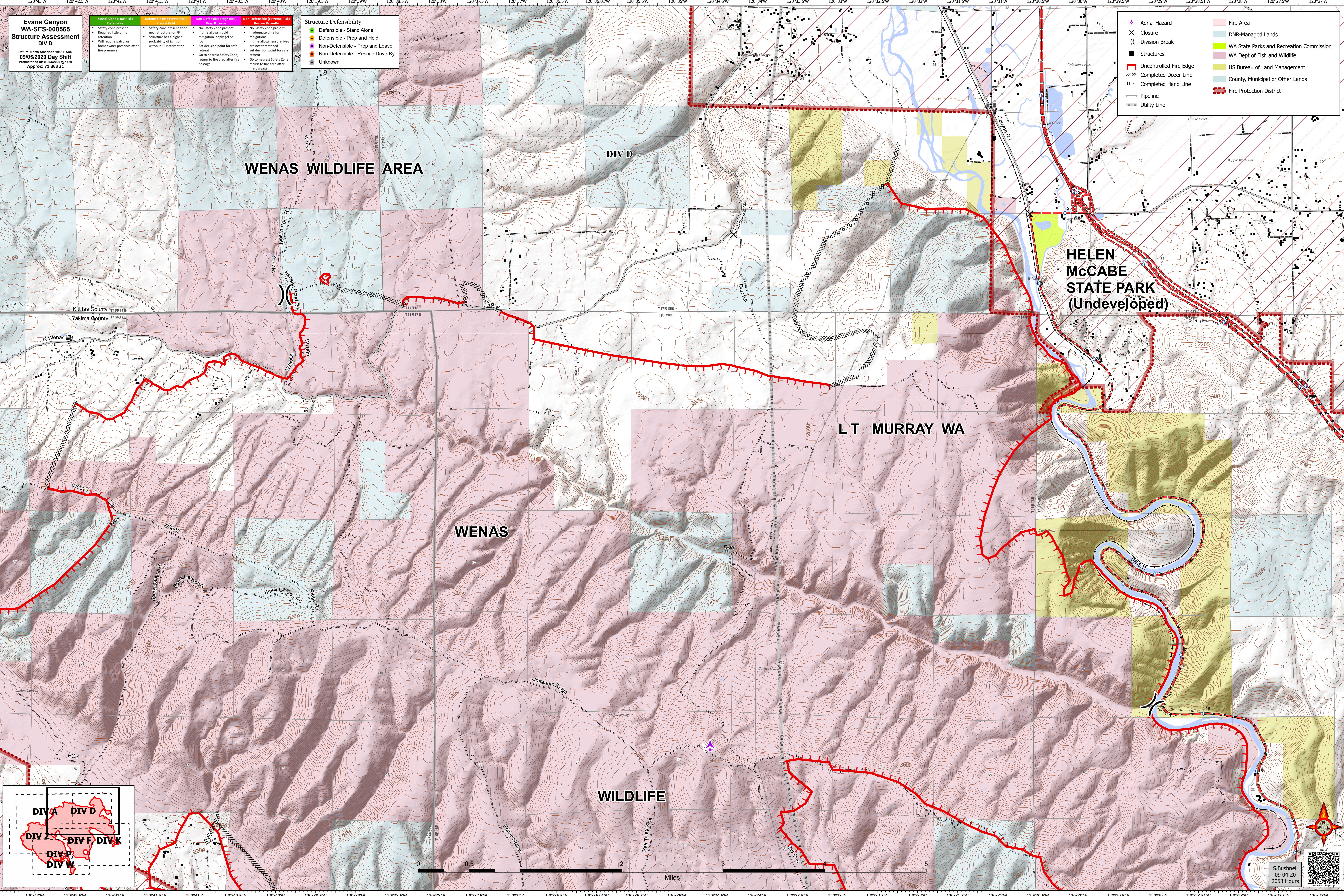
WENAS



WIL

S. Bushnell
09/04/20
2052 Hours





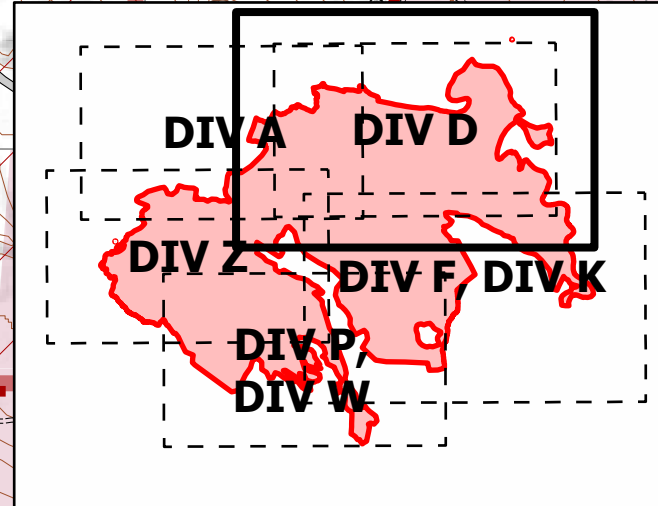
**Evans Canyon
WA-SES-000565
Structure Assessment
DIV D**

Date: North American 1983 HARN
09/05/2020 Day Shift
Perimeter as of: 09/04/20 @ 1130
Approx: 73,868 ac

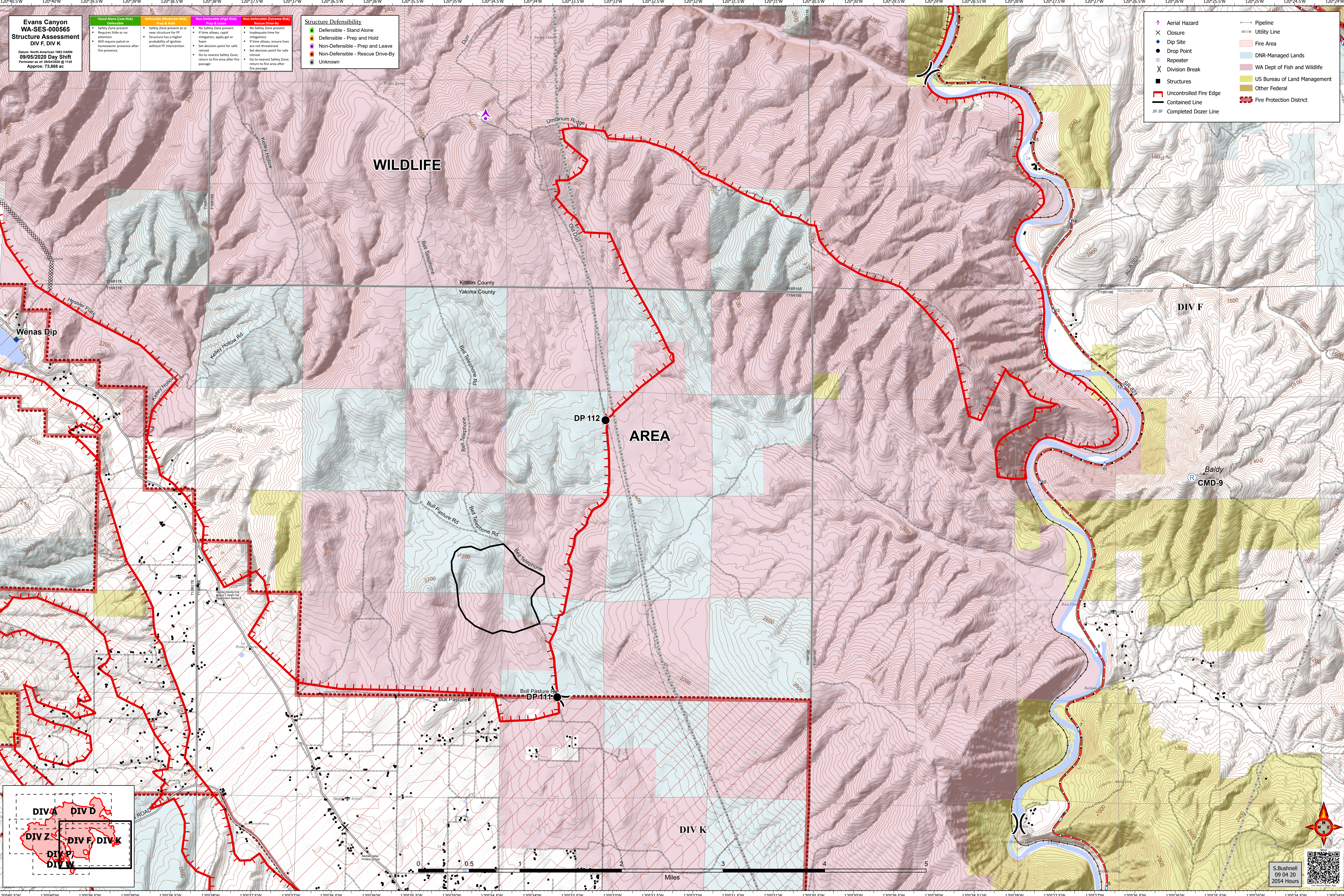
- | Stand Alone (Low Risk) | Defensible (Moderate Risk) | Non-Defensible (High Risk) | Non-Defensible (Extreme Risk) |
|--|---|---|---|
| <ul style="list-style-type: none"> • Safety Zone present • Requires little or no attention • Will require patrol or homeowner presence after fire passage | <ul style="list-style-type: none"> • Safety Zone present at or near structure for FF • Structure has a higher probability of ignition without FF intervention | <ul style="list-style-type: none"> • No Safety Zone present • If time allows, rapid mitigation, apply gel or foam • Set decision point for safe retreat • Go to nearest Safety Zone; return to fire area after fire passage | <ul style="list-style-type: none"> • No Safety Zone present • Inadequate time for mitigation • If time allows, ensure lives are not threatened • Set decision point for safe retreat • Go to nearest Safety Zone; return to fire area after fire passage |

- Structure Defensibility**
- Defensible - Stand Alone
 - Defensible - Prep and Hold
 - Non-Defensible - Prep and Leave
 - Non-Defensible - Rescue Drive-By
 - Unknown

- Aerial Hazard
- Closure
- Division Break
- Structures
- Uncontrolled Fire Edge
- Completed Dozer Line
- Completed Hand Line
- Pipeline
- Utility Line
- Fire Area
- DNR-Managed Lands
- WA State Parks and Recreation Commission
- WA Dept of Fish and Wildlife
- US Bureau of Land Management
- County, Municipal or Other Lands
- Fire Protection District



S. Bushnell
09/04/20
2053 Hours



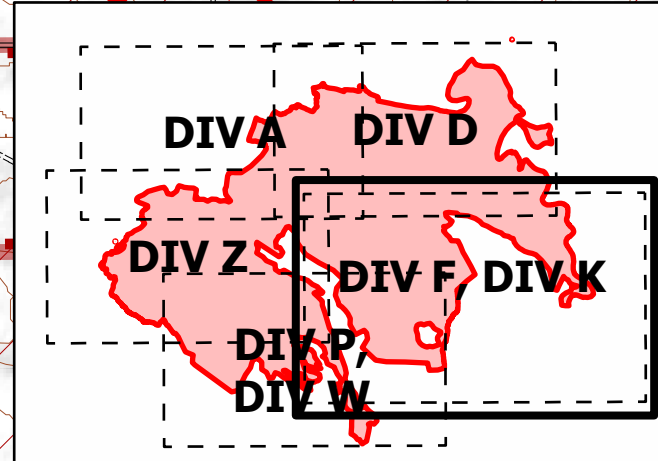
Evans Canyon
WA-SES-000565
Structure Assessment
DIV F, DIV K

Date: North America 1983 NADN
09/05/2020 Day Shift
Perimeter as of: 09/04/20 @ 1130
Approx: 73,868 ac

Stand Alone (Low Risk)	Defensible (Moderate Risk)	Non-Defensible (High Risk)	Non-Defensible (Extreme Risk)
Stand Alone	Defensible	Non-Defensible	Non-Defensible
<ul style="list-style-type: none"> Safety Zone present Requires little or no attention Will require patrol or homeowner presence after fire passage 	<ul style="list-style-type: none"> Safety Zone present at or near structure for FF Structure has a higher probability of ignition without FF intervention 	<ul style="list-style-type: none"> No Safety Zone present If time allows, rapid mitigation, apply gel or foam Set decision point for safe retreat Go to nearest Safety Zone; return to fire area after fire passage 	<ul style="list-style-type: none"> No Safety Zone present Inadequate time for mitigation If time allows, ensure lives are not threatened Set decision point for safe retreat Go to nearest Safety Zone; return to fire area after fire passage

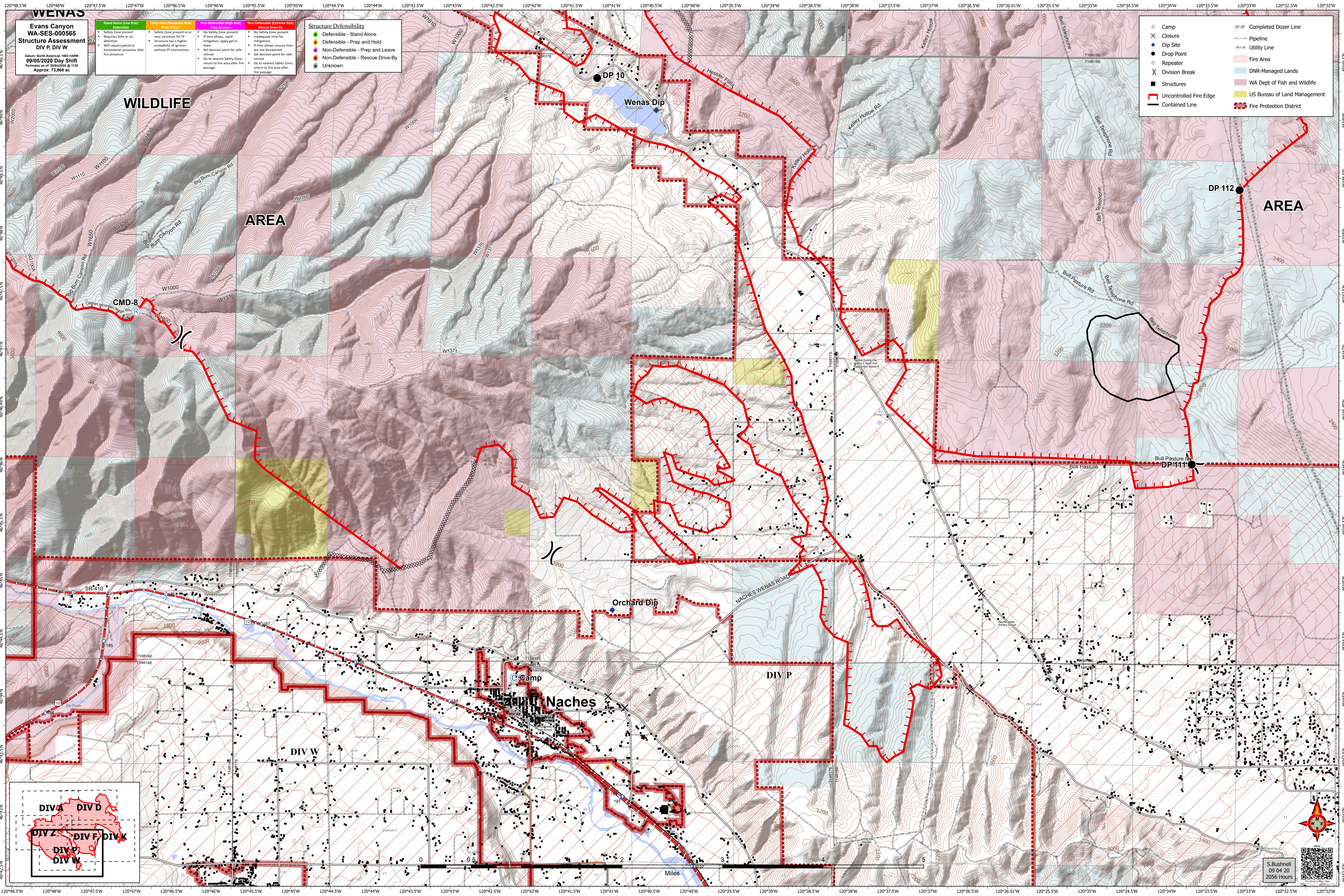
Structure Defensibility	
■	Defensible - Stand Alone
■	Defensible - Prep and Hold
■	Non-Defensible - Prep and Leave
■	Non-Defensible - Rescue Drive-By
■	Unknown

✕	Aerial Hazard		Pipeline
✕	Closure		Utility Line
♦	Dip Site		Fire Area
●	Drop Point		DNR-Managed Lands
⊗	Repeater		WA Dept of Fish and Wildlife
	Division Break		US Bureau of Land Management
■	Structures		Other Federal
	Uncontrolled Fire Edge		Fire Protection District
	Contained Line		
	Completed Dozer Line		



S. Bushnell
09/04/20
2054 Hours





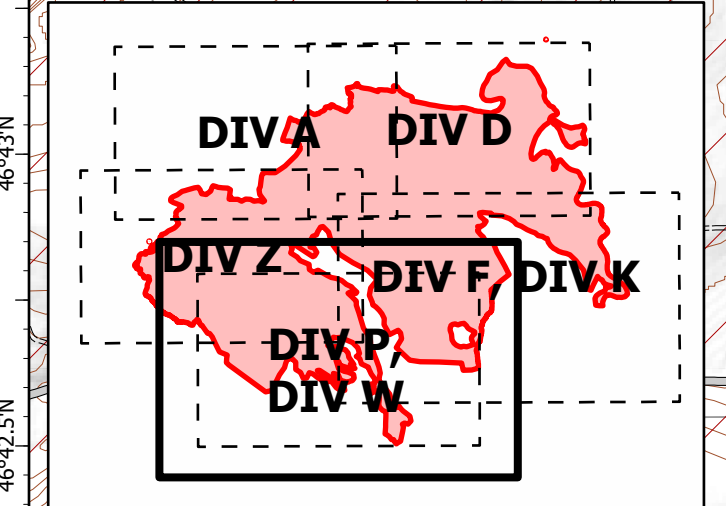
Evans Canyon
WA-SES-000565
Structure Assessment
DIV P, DIV W

Date: North American 1983 HARN
 09/05/2020 Day Shift
 Perimeter as of: 09/04/2020 @ 1130
 Approx: 73,868 ac

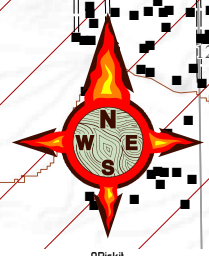
Structure Defensibility

- Defensible - Stand Alone
- Defensible - Prep and Hold
- Non-Defensible - Prep and Leave
- Non-Defensible - Rescue Drive-By
- Unknown

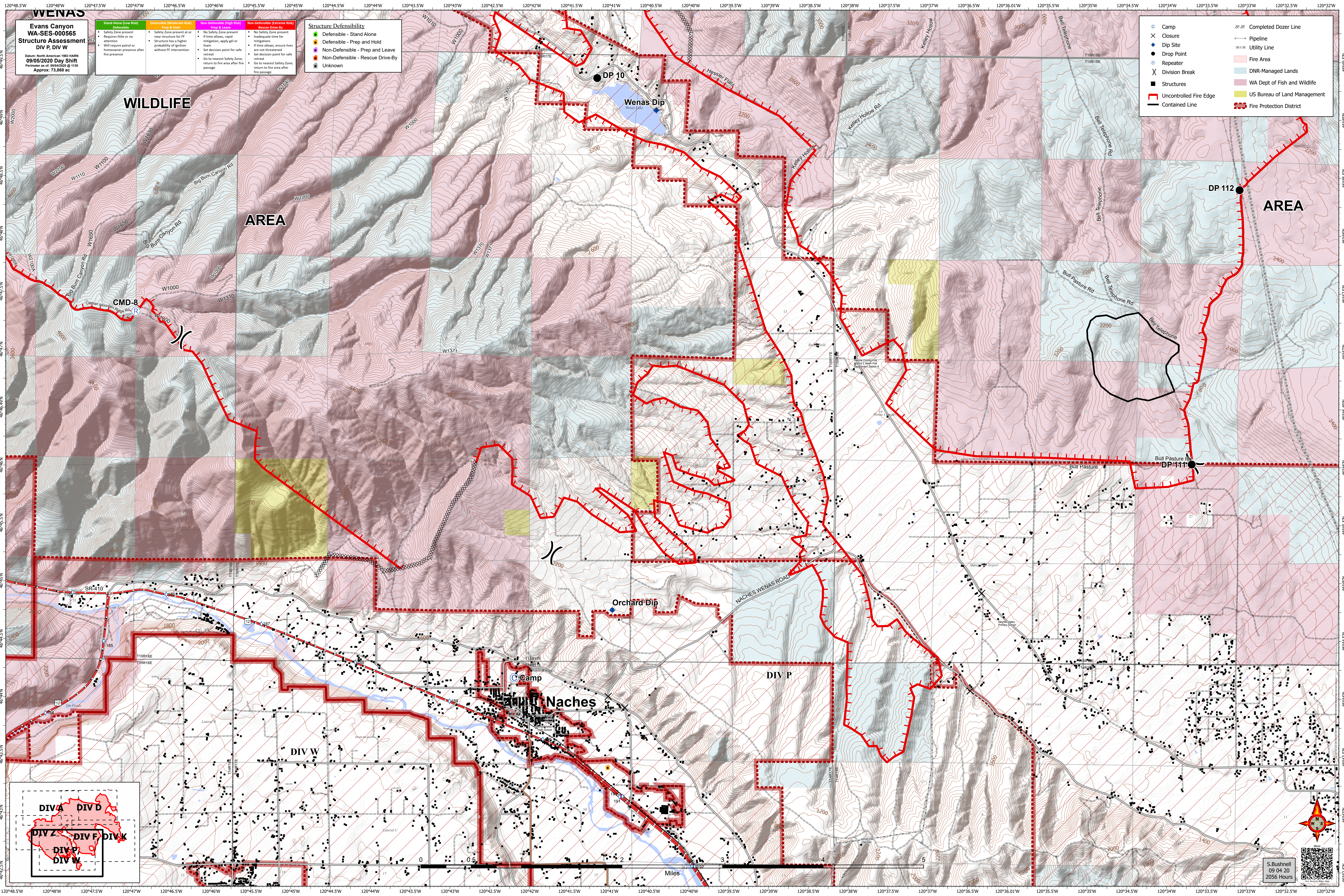
- Camp
- Closure
- Dip Site
- Drop Point
- Repeater
- Division Break
- Structures
- Uncontrolled Fire Edge
- Contained Line
- Completed Dozer Line
- Pipeline
- Utility Line
- Fire Area
- DNR-Managed Lands
- WA Dept of Fish and Wildlife
- US Bureau of Land Management
- Fire Protection District



S. Bushnell
 09/04/20
 2056 Hours



Miles



120°54'W 120°53.5'W 120°53'W 120°52.5'W 120°52'W 120°51.5'W 120°51.01'W 120°50.5'W 120°50'W 120°49.5'W 120°49'W 120°48.5'W 120°48'W 120°47.5'W 120°47'W 120°46.5'W 120°46'W 120°45.5'W 120°45'W 120°44.5'W 120°44'W 120°43.5'W 120°43'W 120°42.5'W 120°42'W 120°41.5'W 120°41'W 120°40.5'W 120°40'W 120°39.5'W 120°39'W 120°38.5'W 120°38'W 120°37.5'W

46°52'N 46°51.5'N 46°51'N 46°50.5'N 46°50'N 46°49.5'N 46°49'N 46°48.5'N 46°48'N 46°47.5'N 46°47'N 46°46.5'N 46°46'N 46°45.5'N 46°45'N 46°44.5'N 46°44'N 46°43.5'N 46°43'N 46°42.5'N 46°42'N 46°41.5'N 46°41'N 46°40.5'N 46°40'N 46°39.5'N 46°39'N 46°38.5'N 46°38'N 46°37.5'N

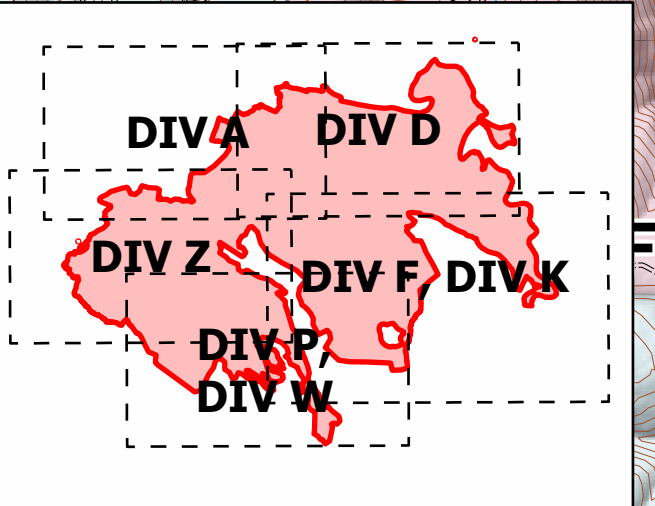
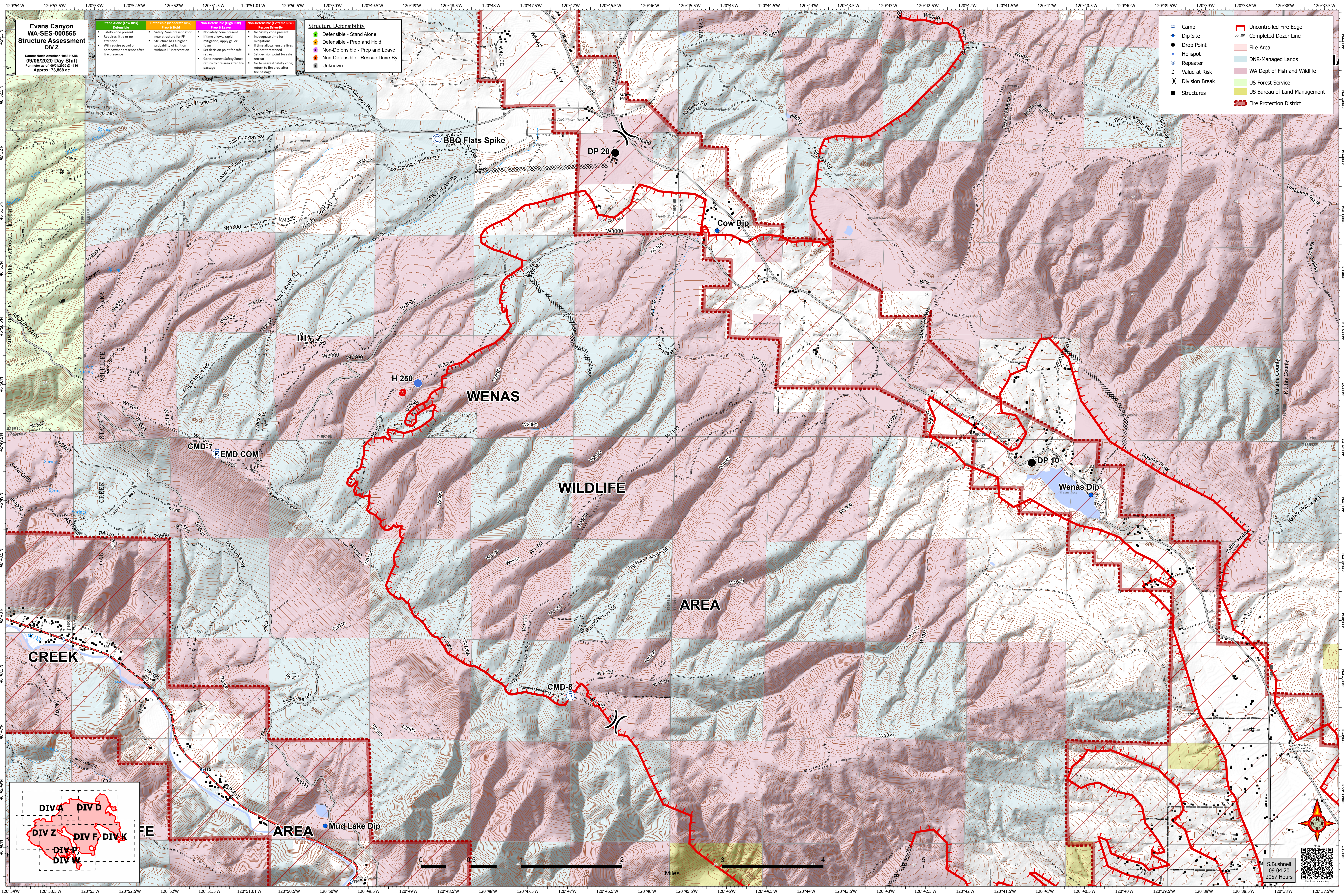
Evans Canyon
WA-SES-000565
Structure Assessment
DIV Z

Date: North American 1983 HARN
09/05/2020 Day Shift
Printer as of: 09/04/20 @ 1:30
Approx: 73,868 ac

Stand Alone (Low Risk)	Defensible (Moderate Risk)	Non-Defensible (High Risk)	Non-Defensible (Extreme Risk)
<ul style="list-style-type: none"> Safety Zone present Requires little or no attention Will require patrol or homeowner presence after fire passage 	<ul style="list-style-type: none"> Safety Zone present at or near structure for FF Structure has a higher probability of ignition without FF intervention 	<ul style="list-style-type: none"> No Safety Zone present If time allows, rapid mitigation, apply gel or foam Set decision point for safe retreat Go to nearest safety zone; return to fire area after fire passage 	<ul style="list-style-type: none"> No Safety Zone present Inadequate time for mitigation If time allows, ensure lives are not threatened Set decision point for safe retreat Go to nearest safety zone; return to fire area after fire passage

Structure Defensibility
<ul style="list-style-type: none"> Defensible - Stand Alone Defensible - Prep and Hold Non-Defensible - Prep and Leave Non-Defensible - Rescue Drive-By Unknown

● Camp	■ Uncontrolled Fire Edge
● Dip Site	--- Completed Dozer Line
● Drop Point	■ Fire Area
● Helispot	■ DNR-Managed Lands
● Repeater	■ WA Dept of Fish and Wildlife
○ Value at Risk	■ US Forest Service
⌵ Division Break	■ US Bureau of Land Management
■ Structures	■ Fire Protection District



S. Bushnell
09 04 20
2057 Hours