

# Evans Canyon WA-SES-000565 AirOps Map

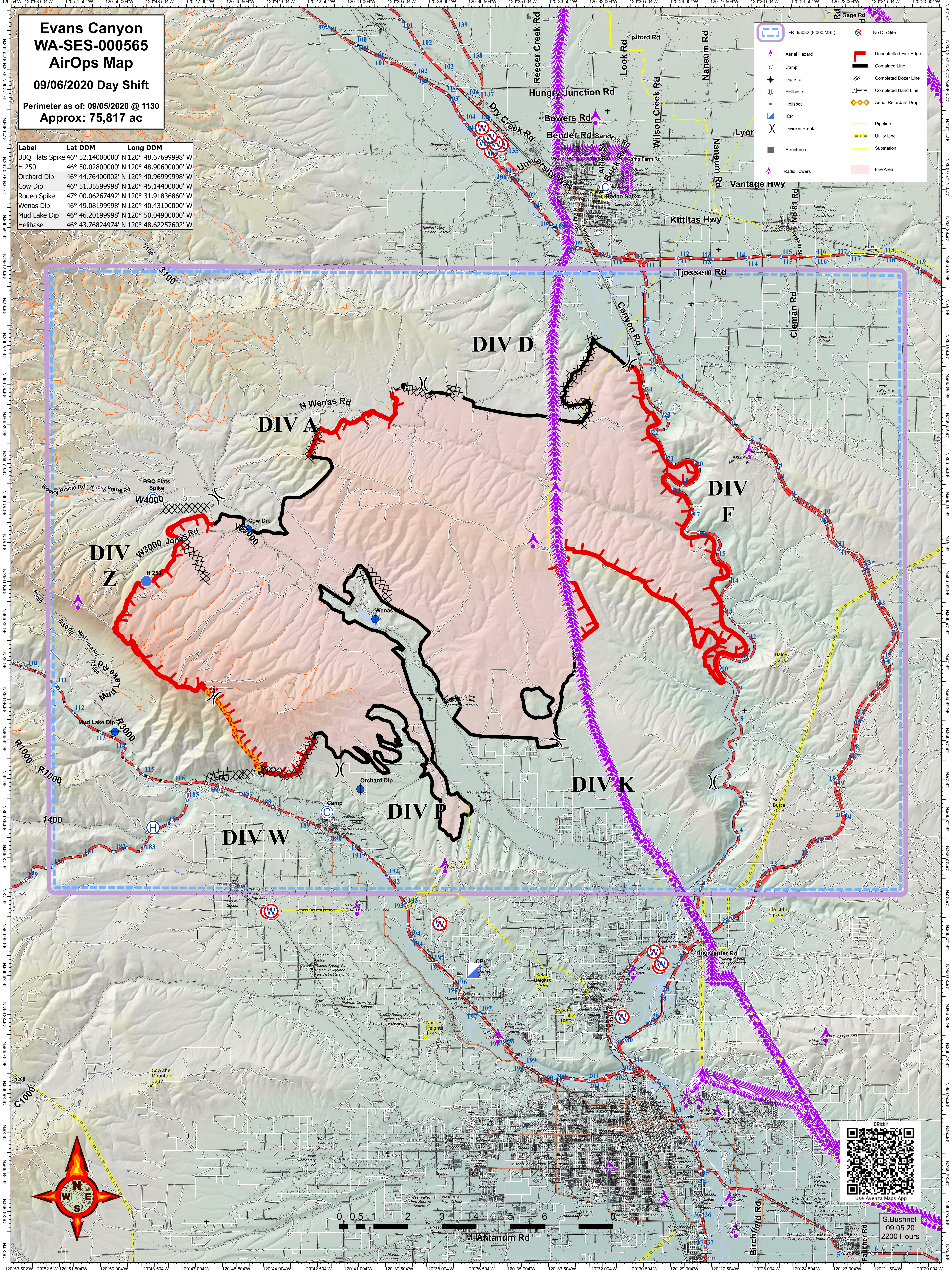
09/06/2020 Day Shift

Perimeter as of: 09/05/2020 @ 1130  
Approx: 75,817 ac

Label	Lat DDM	Long DDM
BBQ Flats Spike	46° 52.1400000' N 120° 48.6769998' W	
H 250	46° 50.0280000' N 120° 48.9060000' W	
Orchard Dip	46° 44.7640002' N 120° 40.9699998' W	
Cow Dip	46° 51.3559998' N 120° 45.1440000' W	
Rodeo Spike	47° 00.0626749' N 120° 31.9183686' W	
Wenas Dip	46° 49.0819998' N 120° 40.4310000' W	
Mud Lake Dip	46° 46.2019998' N 120° 50.0490000' W	
Helibase	46° 43.7682497' N 120° 48.6225760' W	

**Legend**

- Aerial Hazard
- Camp
- Dip Site
- Helibase
- Helipod
- ICP
- Division Break
- Structures
- Radio Towers
- Uncontrolled Fire Edge
- Contained Line
- Completed Dozer Line
- Completed Hand Line
- Aerial Retardant Drop
- Pipeline
- Utility Line
- Substation
- Fire Area
- No Dip Site



S. Bushnell  
09 05 20  
2200 Hours