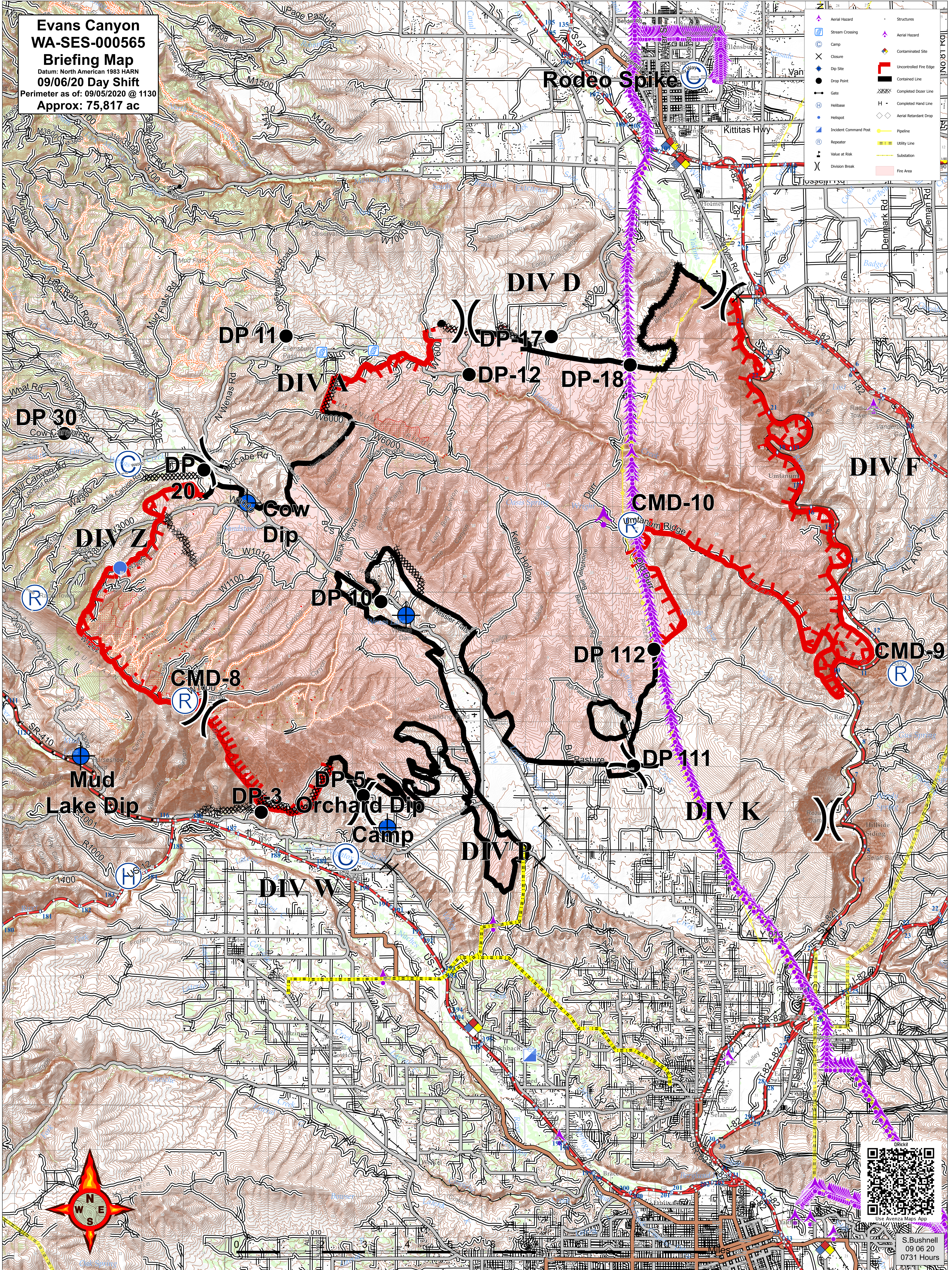


**Evans Canyon
WA-SES-000565
Briefing Map**
Datum: North American 1983 HARN
09/06/20 Day Shift
Perimeter as of: 09/05/2020 @ 1130
Approx: 75,817 ac

- | | | | |
|--|-----------------------|--|------------------------|
| | Aerial Hazard | | Structures |
| | Stream Crossing | | Aerial Hazard |
| | Camp | | Contaminated Site |
| | Closure | | Uncontrolled Fire Edge |
| | Dip Site | | Contained Line |
| | Drop Point | | Completed Dozer Line |
| | Gate | | Completed Hand Line |
| | Helibase | | Aerial Retardant Drop |
| | Incident Command Post | | Pipeline |
| | Repeater | | Utility Line |
| | Value at Risk | | Substation |
| | Division Break | | Fire Area |



S. Bushnell
09 06 20
0731 Hours