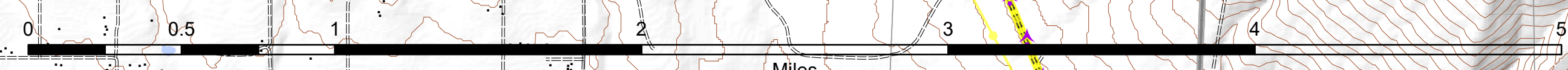
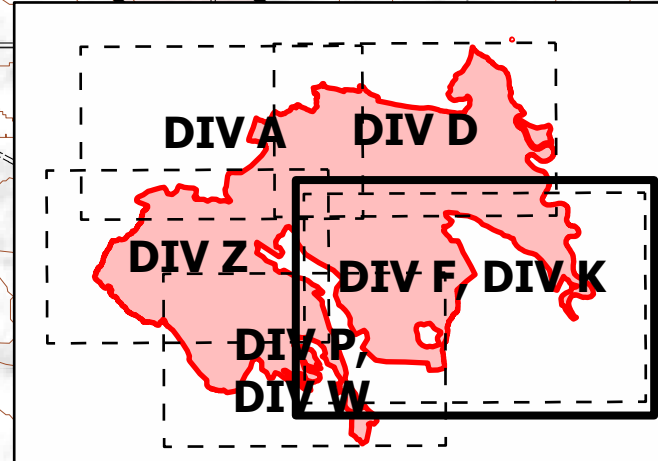
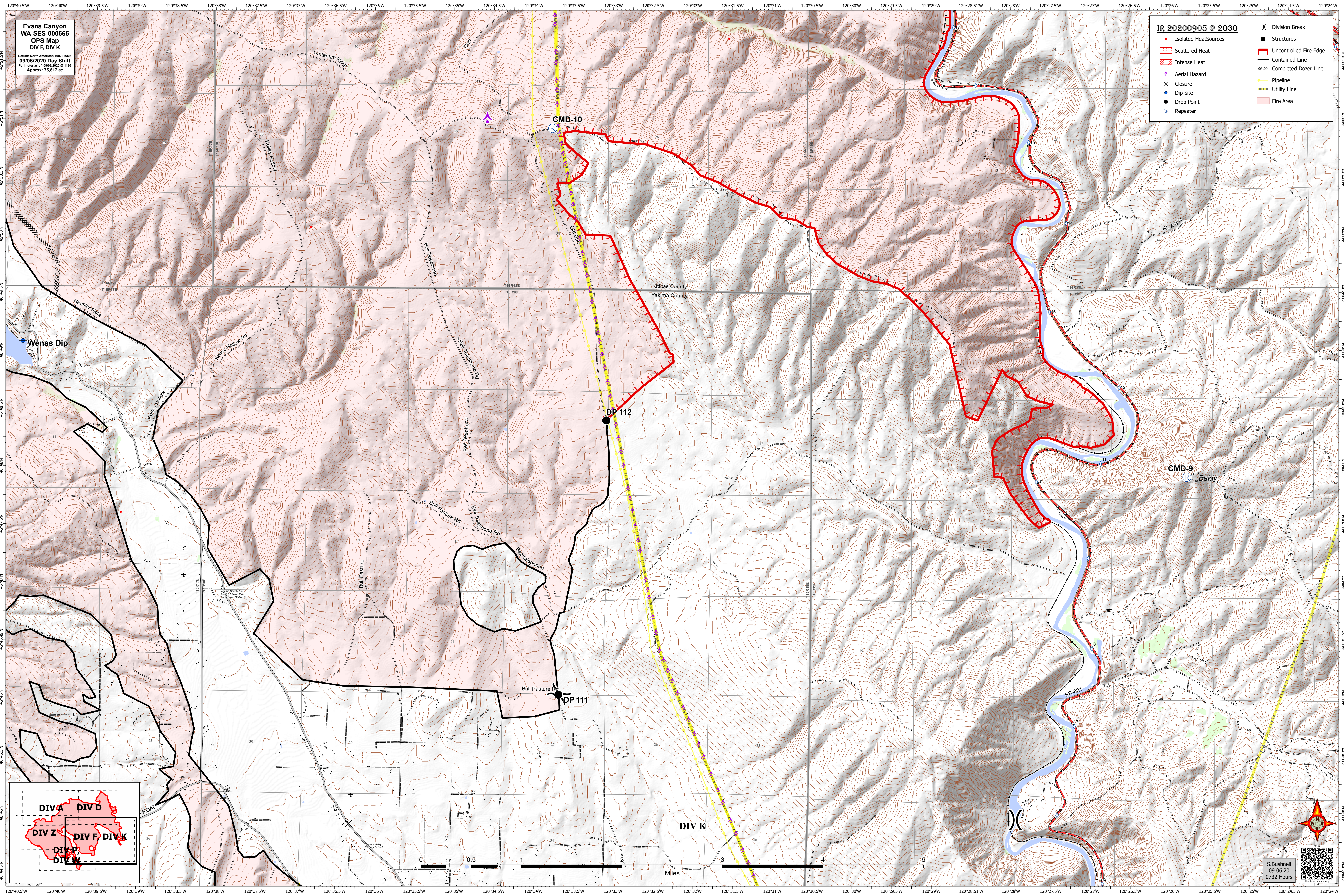


Evans Canyon  
WA-SES-000565  
OPS Map  
DIV F, DIV K

Datum: North American 1983 HARN  
09/06/2020 Day Shift  
Perimeter as of: 09/05/2020 @ 1130  
Approx: 75,817 ac

**IR 20200905 @ 2030**

● Isolated HeatSources	⌘ Division Break
▨ Scattered Heat	■ Structures
▨ Intense Heat	▬ Uncontrolled Fire Edge
▨ Aerial Hazard	▬ Contained Line
× Closure	⌘ Completed Dozer Line
● Dip Site	▬ Pipeline
● Drop Point	▬ Utility Line
● Repeater	▨ Fire Area



S. Bushnell  
09 06 20  
0732 Hours

