

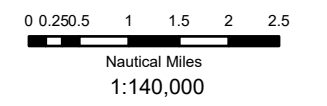
# Evans Canyon

WA-SES-000565  
09/06/2020 Day Shift  
Approx. 75,817 ac

Perimeter as of 09/05/2020 @ 1130  
Datum: North American 1983 HARN



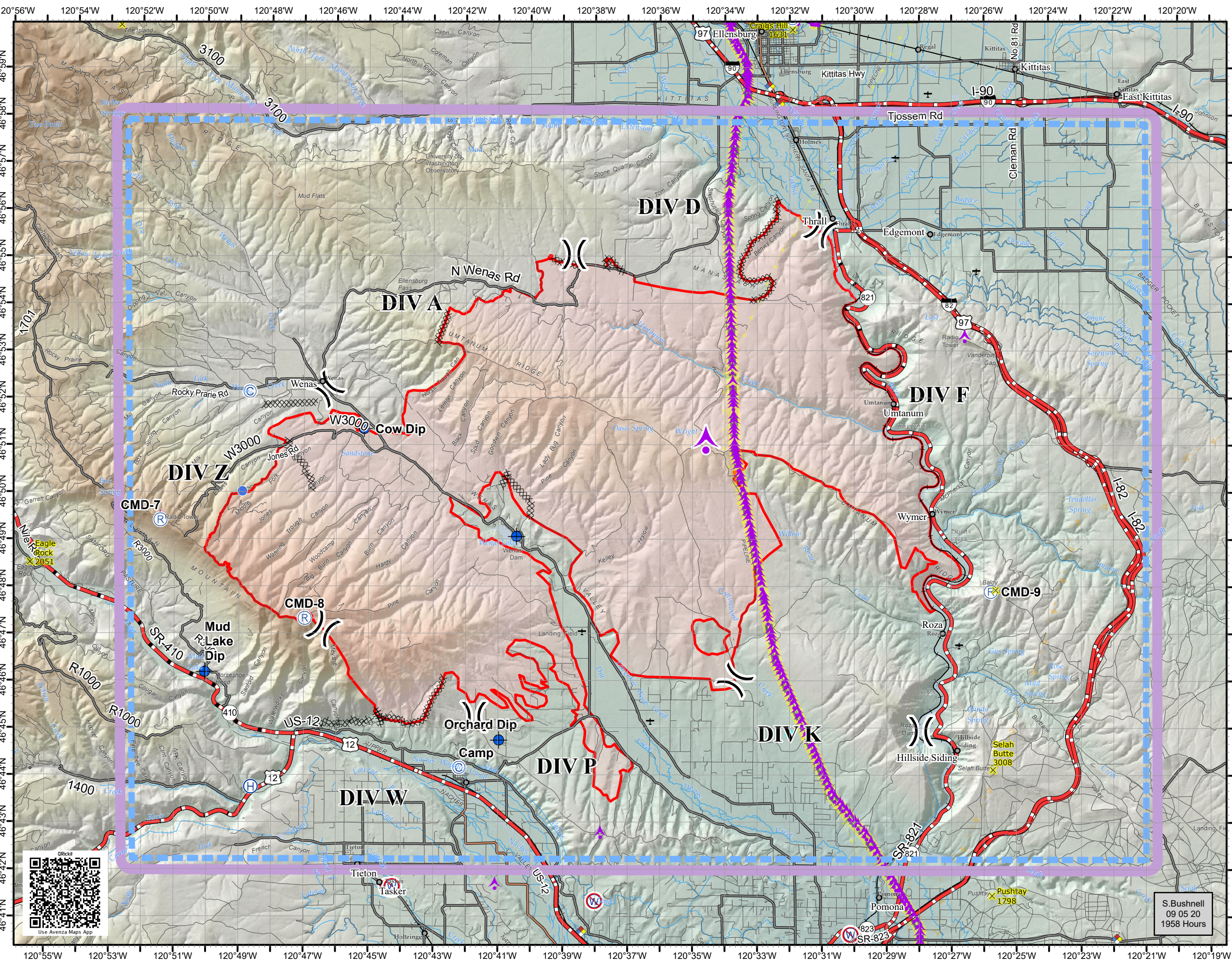
Declination 15.1° E



TFR 0/5082 (8,000 MSL)

- Aerial Hazard
- Camp
- Dip Site
- Helibase
- Helispot
- ICP
- Repeater
- Division Break
- Aerial Hazard
- No Dip Site
- Contaminated Site
- Utility
- Pipeline
- Utility Line
- Substation
- Fire Area

Label	Lat DDM	Long DDM
BBQ Flats Spike	46° 52.14000000' N	120° 48.67699998' W
H 250	46° 50.02800000' N	120° 48.90600000' W
Orchard Dip	46° 44.76400002' N	120° 40.96999998' W
Cow Dip	46° 51.35599998' N	120° 45.14400000' W
Rodeo Spike	47° 00.06267492' N	120° 31.91836860' W
Wenas Dip	46° 49.08199998' N	120° 40.43100000' W
Mud Lake Dip	46° 46.20199998' N	120° 50.04900000' W
Helibase	46° 43.76824974' N	120° 48.62257602' W



S. Bushnell  
09 05 20  
1958 Hours

Datum: North American 1983 HARN

