


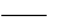


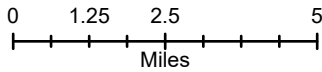


**Evans Canyon
WA-SES-000565
Public Information Map**

09/06/2020 Day Shift
Approx: 75,817 ac

-  Fire Area
-  Highway
-  Primary Road
-  Light-Duty Road
-  Unimproved Road
-  Road Closure



Disclaimer:

While NW IMT12 makes every effort to represent the data shown on these maps as completely and accurately as possible, no warranty is given, expressed or implied, as to the accuracy, reliability, or completeness of these data. In addition, NW IMT12 and/or other participating agencies shall not be held liable for improper or incorrect use of the data described and/or contained herein. Graphical representations provided by the use of this data does not represent any legal description of the data herein and are provided only as a general representation of the data. No indication/statement of fire containment is given, expressed or implied by this product.

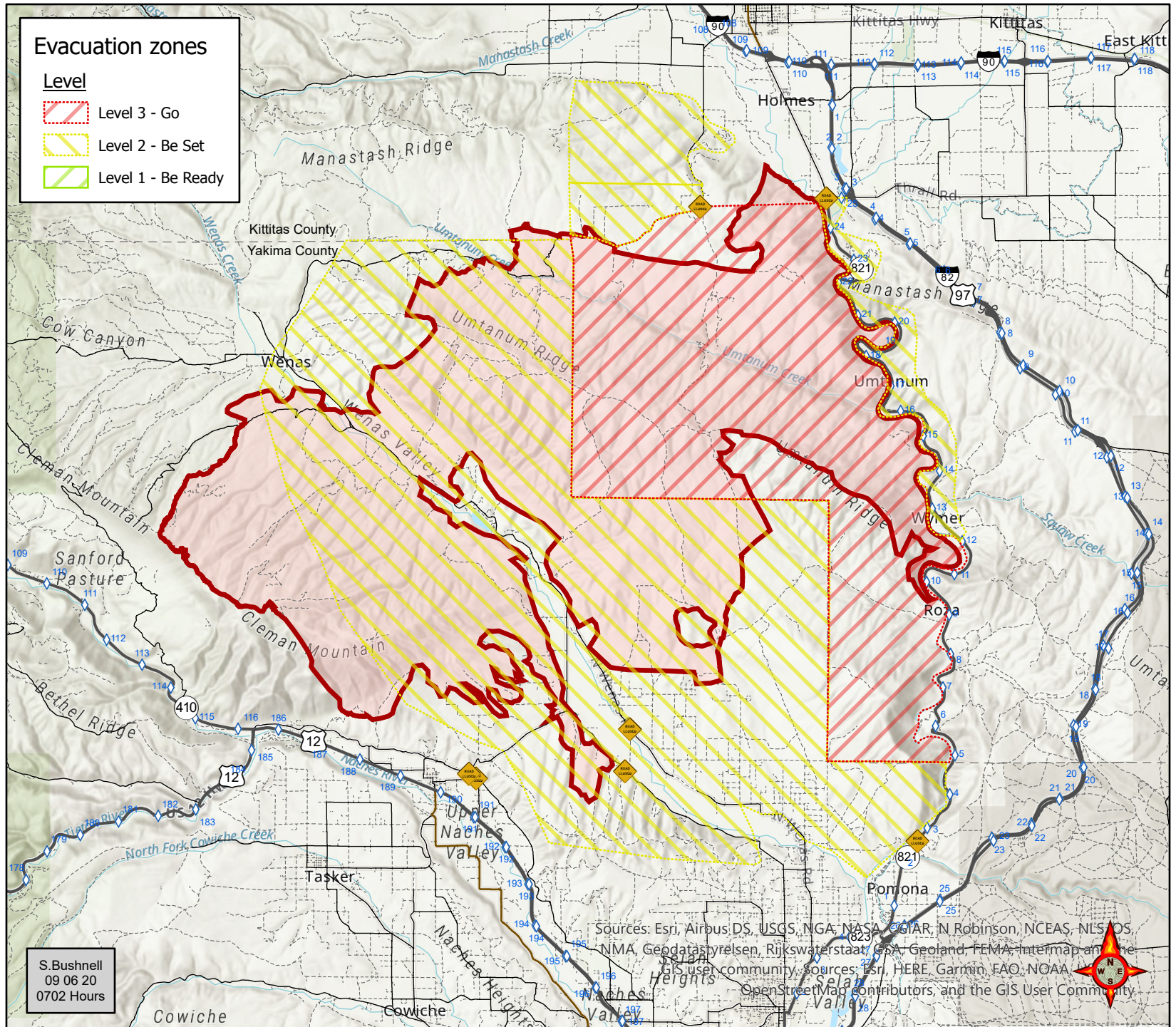
More Information:
<http://inciweb.nwcg.gov>



S. Bushnell
09 06 20
0702 Hours

Evacuation zones

- Level**
-  Level 3 - Go
-  Level 2 - Be Set
-  Level 1 - Be Ready



Sources: Esri, Airbus DS, USGS, NGA, NASA, CGIAR, N Robinson, NCEAS, NLS, OS, NMA, Geodatas, vresen, Rijkswaterstaat, GSA, Geoland, FEMA, Intermap, and the GIS user community. Sources: Esri, HERE, Garmin, FAO, NOAA, OpenStreetMap contributors, and the GIS User Community.