

**Evans Canyon  
WA-SES-000565  
Structure Assessment  
DIV A**

Date: North American 1983 HARN  
09/06/2020 Day Shift  
Perimeter as of: 09/05/2020 @ 1130  
Approx: 75.817 ac

Stand Alone (Low Risk)	Defensible (Moderate Risk)	Non-Defensible (High Risk)	Non-Defensible (Extreme Risk)
<ul style="list-style-type: none"> <li>• Safety Zone present</li> <li>• Requires little or no attention</li> <li>• Will require patrol or homeowner presence after fire passage</li> </ul>	<ul style="list-style-type: none"> <li>• Safety Zone present at or near structure for FF</li> <li>• Structure has a higher probability of ignition without FF intervention</li> </ul>	<ul style="list-style-type: none"> <li>• No Safety Zone present</li> <li>• If time allows, rapid mitigation, apply gel or foam</li> <li>• Set decision point for safe retreat</li> <li>• Go to nearest Safety Zone; return to fire area after fire passage</li> </ul>	<ul style="list-style-type: none"> <li>• No Safety Zone present</li> <li>• Inadequate time for mitigation</li> <li>• If time allows, ensure lives are not threatened</li> <li>• Set decision point for safe retreat</li> <li>• Go to nearest Safety Zone; return to fire area after fire passage</li> </ul>

Structure Defensibility
<ul style="list-style-type: none"> <li>• Defensible - Stand Alone</li> <li>• Defensible - Prep and Hold</li> <li>• Non-Defensible - Prep and Leave</li> <li>• Non-Defensible - Rescue Drive-By</li> <li>• Unknown</li> </ul>

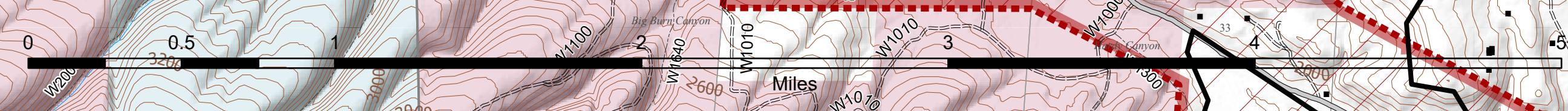
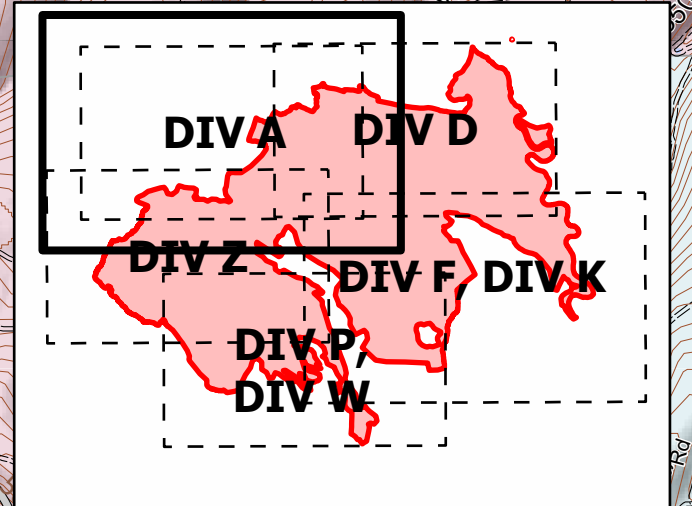
• Camp	▭ Uncontrolled Fire Edge
• Dip Site	▭ Contained Line
• Drop Point	▭ Completed Dozer Line
• Helispot	▭ Completed Hand Line
• Stream Crossing	▭ Fire Area
• Value at Risk	▭ DNR-Managed Lands
• Division Break	▭ WA Dept of Fish and Wildlife
• Structures	▭ Fire Protection District

**DLIFE AREA**

**WENAS WILDLIFE AREA**

**DIVA**

**WENAS**



S. Bushnell  
09/05/20  
2112 Hours