

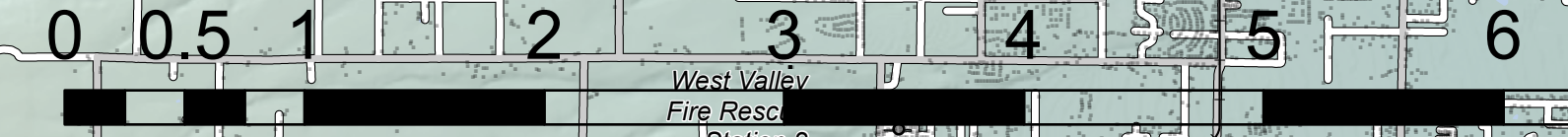
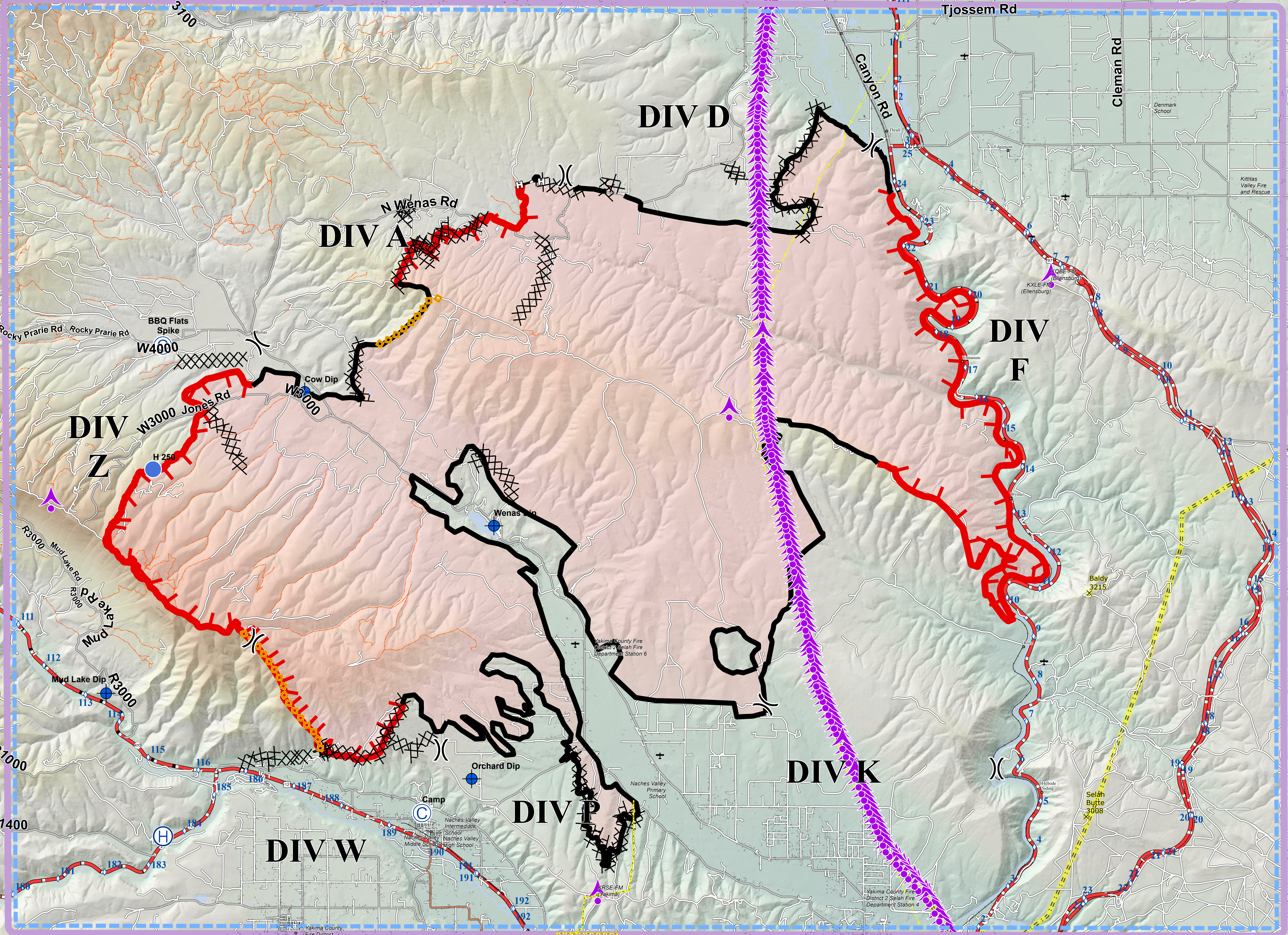
# Evans Canyon WA-SES-000565 AirOps Map

09/07/2020 Day Shift

Perimeter as of: 09/05/2020 @ 1130  
Approx: 75,817 ac

Label	Lat DDM	Long DDM
BBQ Flats Spike	46° 52.14000000' N 120° 48.67699998' W	
H 250	46° 50.02800000' N 120° 48.90600000' W	
Orchard Dip	46° 44.76400002' N 120° 40.96999998' W	
Cow Dip	46° 51.35599998' N 120° 45.14400000' W	
Rodeo Spike	47° 00.06267492' N 120° 31.91836860' W	
Wenas Dip	46° 49.08199998' N 120° 40.43100000' W	
Mud Lake Dip	46° 46.20199998' N 120° 50.04900000' W	
Helibase	46° 43.76824974' N 120° 48.62257602' W	

	TFR 0/5082 (8,000 MSL)		No Dip Site
	Aerial Hazard		Uncontrolled Fire Edge
	Camp		Contained Line
	Dip Site		Completed Dozer Line
	Helibase		Completed Hand Line
	Helipod		Aerial Retardant Drop
	ICP		Pipeline
	Division Break		Utility Line
	Structures		Substation
	Radio Towers		Fire Area



S. Bushnell  
09 06 20  
2151 Hours

