

Evans Canyon
WA-SES-000565
Structure Assessment
DIV D

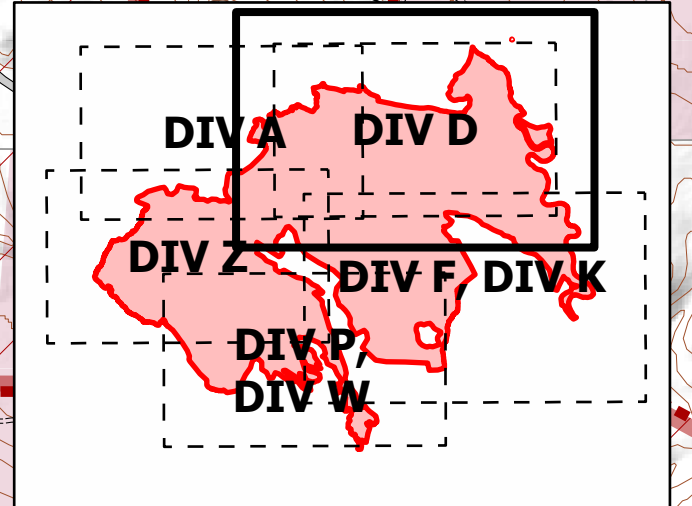
Date: North American 1983 HARN
09/07/2020 Day Shift
Perimeter as of: 09/05/2020 @ 1130
Approx: 75,817 ac

Stand Alone (Low Risk)	Defensible (Moderate Risk)	Non-Defensible (High Risk)	Non-Defensible (Extreme Risk)
Stand Alone <ul style="list-style-type: none">• Safety Zone present• Requires little or no attention• Will require patrol or homeowner presence after fire passage	Defensible <ul style="list-style-type: none">• Safety Zone present at or near structure for FF• Structure has a higher probability of ignition without FF intervention	Non-Defensible <ul style="list-style-type: none">• No Safety Zone present• If time allows, rapid mitigation, apply gel or foam• Set decision point for safe retreat• Go to nearest Safety Zone; return to fire area after fire passage	Non-Defensible <ul style="list-style-type: none">• No Safety Zone present• Inadequate time for mitigation• If time allows, ensure lives are not threatened• Set decision point for safe retreat• Go to nearest Safety Zone; return to fire area after fire passage

Structure Defensibility

- Defensible - Stand Alone
- Defensible - Prep and Hold
- Non-Defensible - Prep and Leave
- Non-Defensible - Rescue Drive-By
- Unknown

▲ Aerial Hazard	○ Completed Hand Line
× Closure	○ Aerial Retardant Drop
● Drop Point	— Pipeline
○ Fence - Cut/Damaged	— Utility Line
○ Repeater	— Fire Area
— Stream Crossing	— DNR-Managed Lands
▲ Value at Risk	— WA State Parks and Recreation Commission
⌂ Division Break	— WA Dept of Fish and Wildlife
⌂ Structures	— US Bureau of Land Management
— Uncontrolled Fire Edge	— County, Municipal or Other Lands
— Contained Line	— Fire Protection District
— Completed Dozer Line	



S. Bushnell
09 06 20
2132 Hours