

120°48.5'W 120°47.5'W 120°46.5'W 120°45.5'W 120°44.5'W 120°43.5'W 120°42.5'W 120°41.5'W 120°40.5'W 120°39.5'W 120°38.5'W 120°37.5'W 120°36.5'W 120°35.5'W 120°34.5'W 120°33.5'W 120°32.5'W 120°31.5'W

**WENAS**

**Evans Canyon**  
**WA-SES-000565**  
**Structure Assessment**  
**DIV P, DIV W**

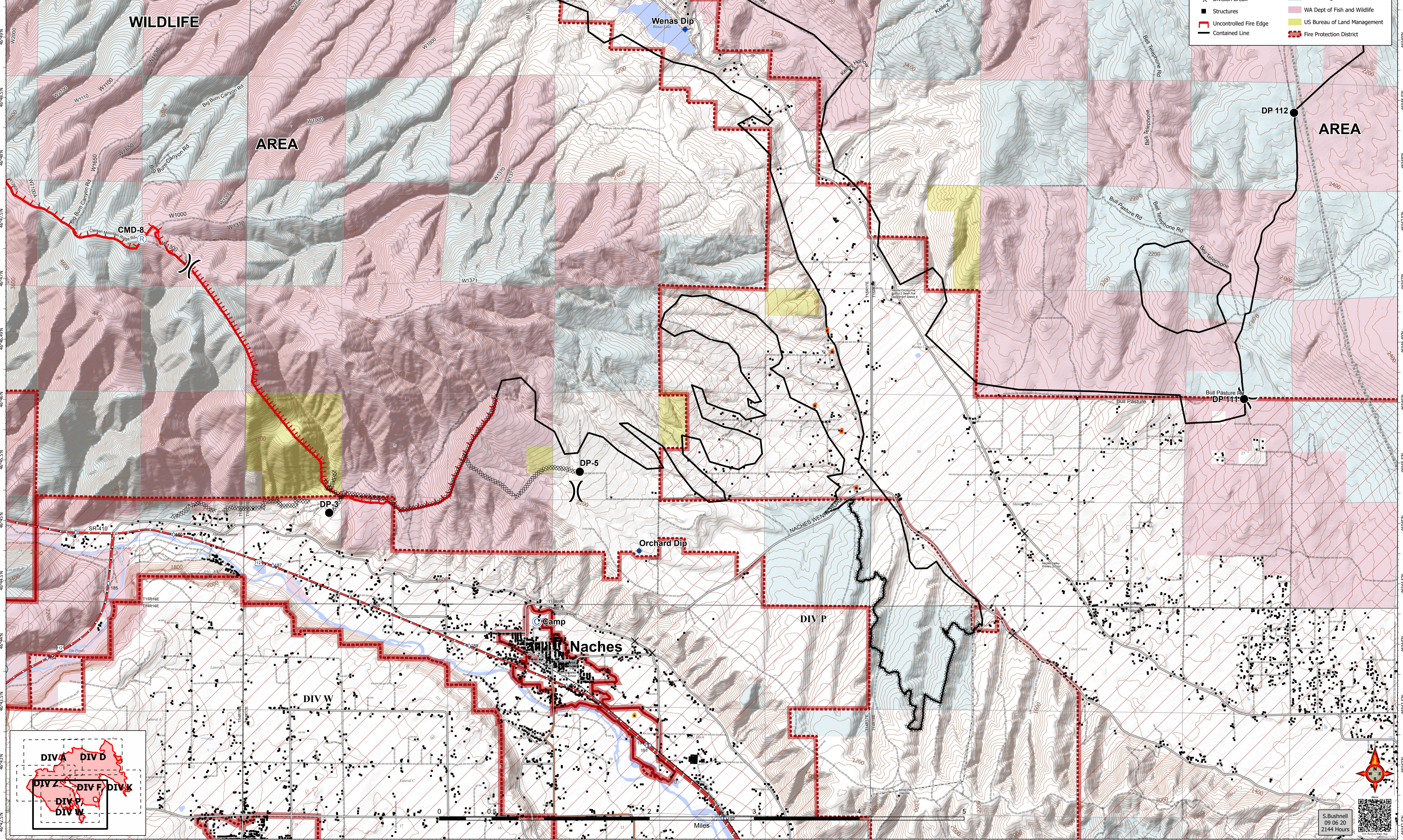
Date: North American 1983 HARN  
 09/07/2020 Day Shift  
 Perimeter as of: 09/05/2020 @ 1130  
 Approx: 75,817 ac

<b>Stand Alone (Low Risk)</b>	<b>Defensible (Moderate Risk)</b>	<b>Non-Defensible (High Risk)</b>	<b>Non-Defensible (Extreme Risk)</b>
<ul style="list-style-type: none"> <li>• Safety Zone present</li> <li>• Requires little or no attention</li> <li>• Will require patrol or homeowner presence after fire passage</li> </ul>	<ul style="list-style-type: none"> <li>• Safety Zone present at or near structure for FF</li> <li>• Structure has a higher probability of ignition without FF intervention</li> </ul>	<ul style="list-style-type: none"> <li>• No Safety Zone present</li> <li>• If time allows, rapid mitigation, apply gel or foam</li> <li>• Set decision point for safe retreat</li> <li>• Go to nearest safety zone; return to fire area after fire passage</li> </ul>	<ul style="list-style-type: none"> <li>• No Safety Zone present</li> <li>• Inadequate time for mitigation</li> <li>• If time allows, ensure lives are not threatened</li> <li>• Set decision point for safe retreat</li> <li>• Go to nearest safety zone; return to fire area after fire passage</li> </ul>

**Structure Defensibility**

- Green square: Defensible - Stand Alone
- Yellow square: Defensible - Prep and Hold
- Orange square: Non-Defensible - Prep and Leave
- Purple square: Non-Defensible - Rescue Drive-By
- Black square: Unknown

Blue circle: Camp	Black X: Closure	Black dot: Dip Site	Black dot: Drop Point	Blue circle: Helibase	Black circle: Repeater	Black X: Division Break	Black square: Structures	Red dashed line: Uncontrolled Fire Edge	Black line: Contained Line
Black X: Completed Dozer Line	White diamond: Aerial Retardant Drop	Black line: Pipeline	Black line: Utility Line	Red area: Fire Area	Light blue area: DNR-Managed Lands	Light green area: WA Dept of Fish and Wildlife	Yellow area: US Bureau of Land Management	Red dashed line: Fire Protection District	



**Map Overview**

Diagram showing the location of the assessment area within a larger regional context, labeled with DIV A, DIV D, DIV Z, DIV F, DIV K, DIV P, and DIV W.

S. Bushnell  
 09 06 20  
 2144 Hours

120°48.5'W 120°48'W 120°47.5'W 120°47'W 120°46.5'W 120°46'W 120°45.5'W 120°45'W 120°44.5'W 120°44'W 120°43.5'W 120°43'W 120°42.5'W 120°42'W 120°41.5'W 120°41'W 120°40.5'W 120°40'W 120°39.5'W 120°39'W 120°38.5'W 120°38'W 120°37.5'W 120°37'W 120°36.5'W 120°36'W 120°35.5'W 120°35'W 120°34.5'W 120°34'W 120°33.5'W 120°33'W 120°32.5'W 120°32'W