

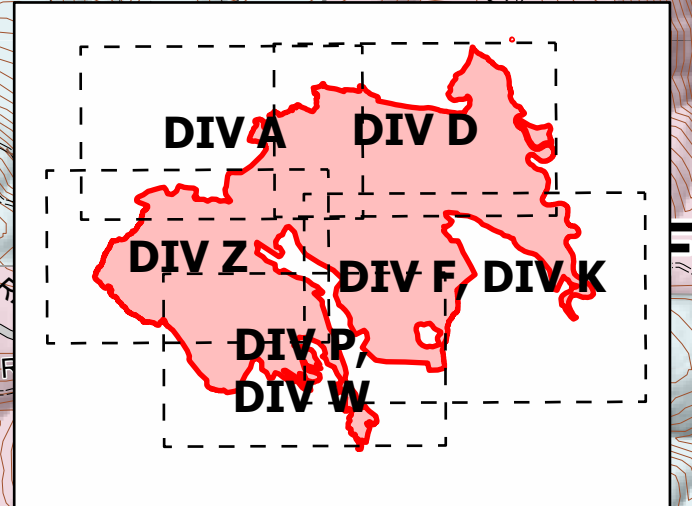
**Evans Canyon
WA-SES-000565
Structure Assessment
DIV Z**

Date: North American 1983 HARN
09/07/2020 Day Shift
Printer as of: 09/05/2020 @ 1:30
Approx: 75.817 ac

Stand Alone (Low Risk)	Defensible (Moderate Risk)	Non-Defensible (High Risk)	Non-Defensible (Extreme Risk)
<ul style="list-style-type: none">• Safety Zone present• Requires little or no attention• Will require patrol or homeowner presence after fire passage	<ul style="list-style-type: none">• Safety Zone present at or near structure for FF intervention• Structure has a higher probability of ignition without FF intervention	<ul style="list-style-type: none">• No Safety Zone present• If time allows, rapid mitigation, apply gel or foam• Set decision point for safe retreat• Go to nearest Safety Zone; return to fire area after fire passage	<ul style="list-style-type: none">• No Safety Zone present• Inadequate time for mitigation• If time allows, ensure lives are not threatened• Set decision point for safe retreat• Go to nearest Safety Zone; return to fire area after fire passage

Structure Defensibility
• Defensible - Stand Alone
• Defensible - Prep and Hold
• Non-Defensible - Prep and Leave
• Non-Defensible - Rescue Drive-By
• Unknown

• Camp	— Contained Line
• Dip Site	— Completed Dozer Line
• Drop Point	◇ Aerial Retardant Drop
• HeliSpot	■ Fire Area
• Repeater	■ DNR-Managed Lands
• Value at Risk	■ WA Dept of Fish and Wildlife
• Division Break	■ US Forest Service
■ Structures	■ US Bureau of Land Management
— Uncontrolled Fire Edge	■ Fire Protection District



S. Bushnell
09 06 20
2150 Hours