

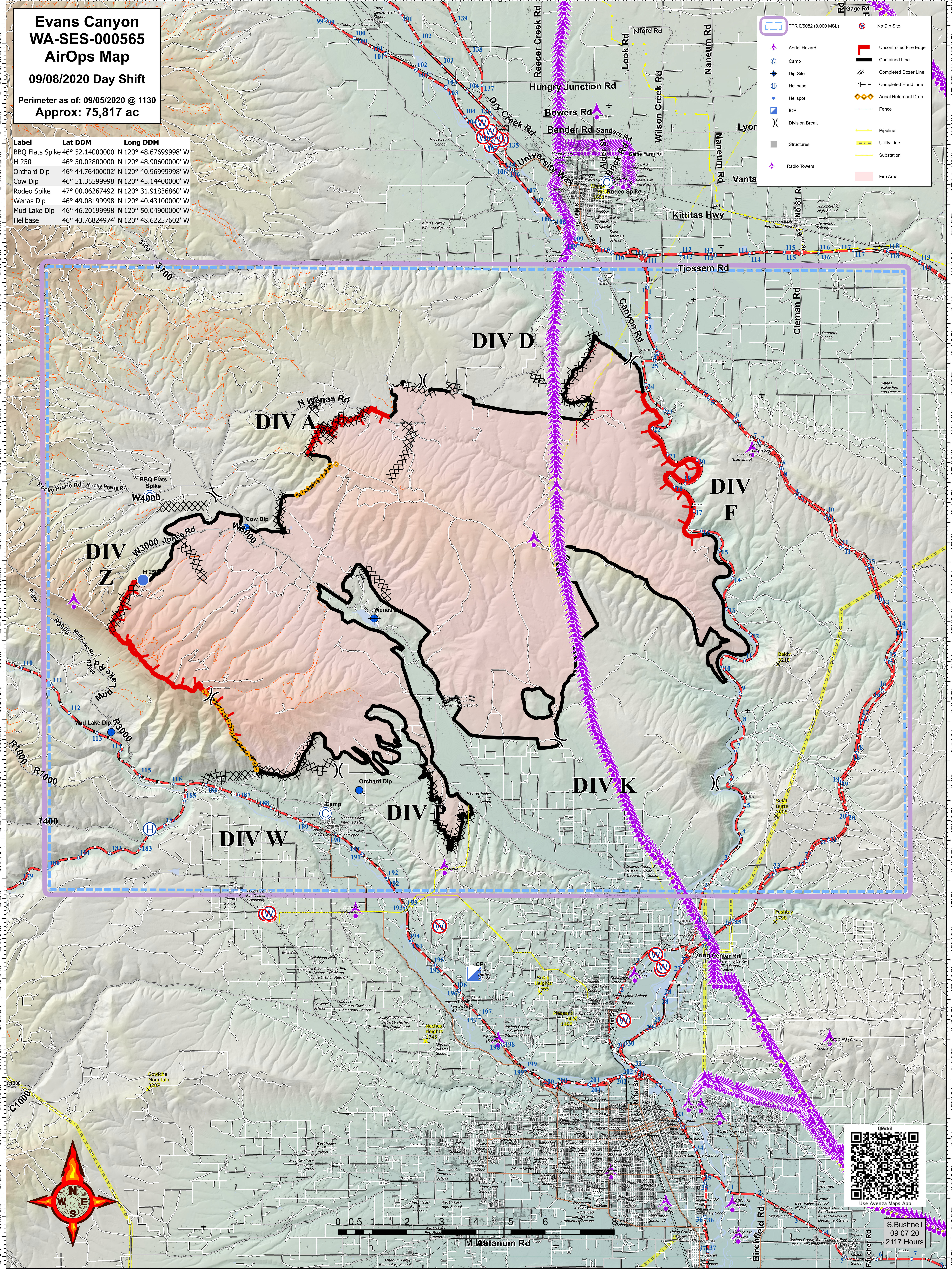
Evans Canyon WA-SES-000565 AirOps Map

09/08/2020 Day Shift

Perimeter as of: 09/05/2020 @ 1130
Approx: 75,817 ac

Label	Lat DDM	Long DDM
BBQ Flats Spike	46° 52.14000000' N 120° 48.67699998' W	
H 250	46° 50.02800000' N 120° 48.90600000' W	
Orchard Dip	46° 44.76400002' N 120° 40.96999998' W	
Cow Dip	46° 51.35599998' N 120° 45.14400000' W	
Rodeo Spike	47° 00.06267492' N 120° 31.91836860' W	
Wenas Dip	46° 49.08199998' N 120° 40.43100000' W	
Mud Lake Dip	46° 46.20199998' N 120° 50.04900000' W	
Helibase	46° 43.76824974' N 120° 48.62257602' W	

	TFR 0/5082 (8,000 MSL)		No Dip Site
	Aerial Hazard		Uncontrolled Fire Edge
	Camp		Contained Line
	Dip Site		Completed Dozer Line
	Helibase		Completed Hand Line
	Helipod		Aerial Retardant Drop
	ICP		Fence
	Division Break		Pipeline
	Structures		Utility Line
	Radio Towers		Substation
			Fire Area



S. Bushnell
09 07 20
2117 Hours