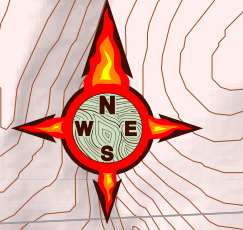
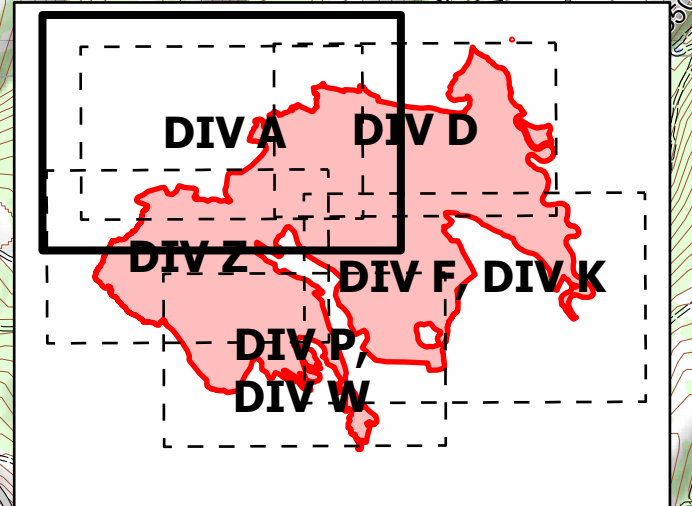
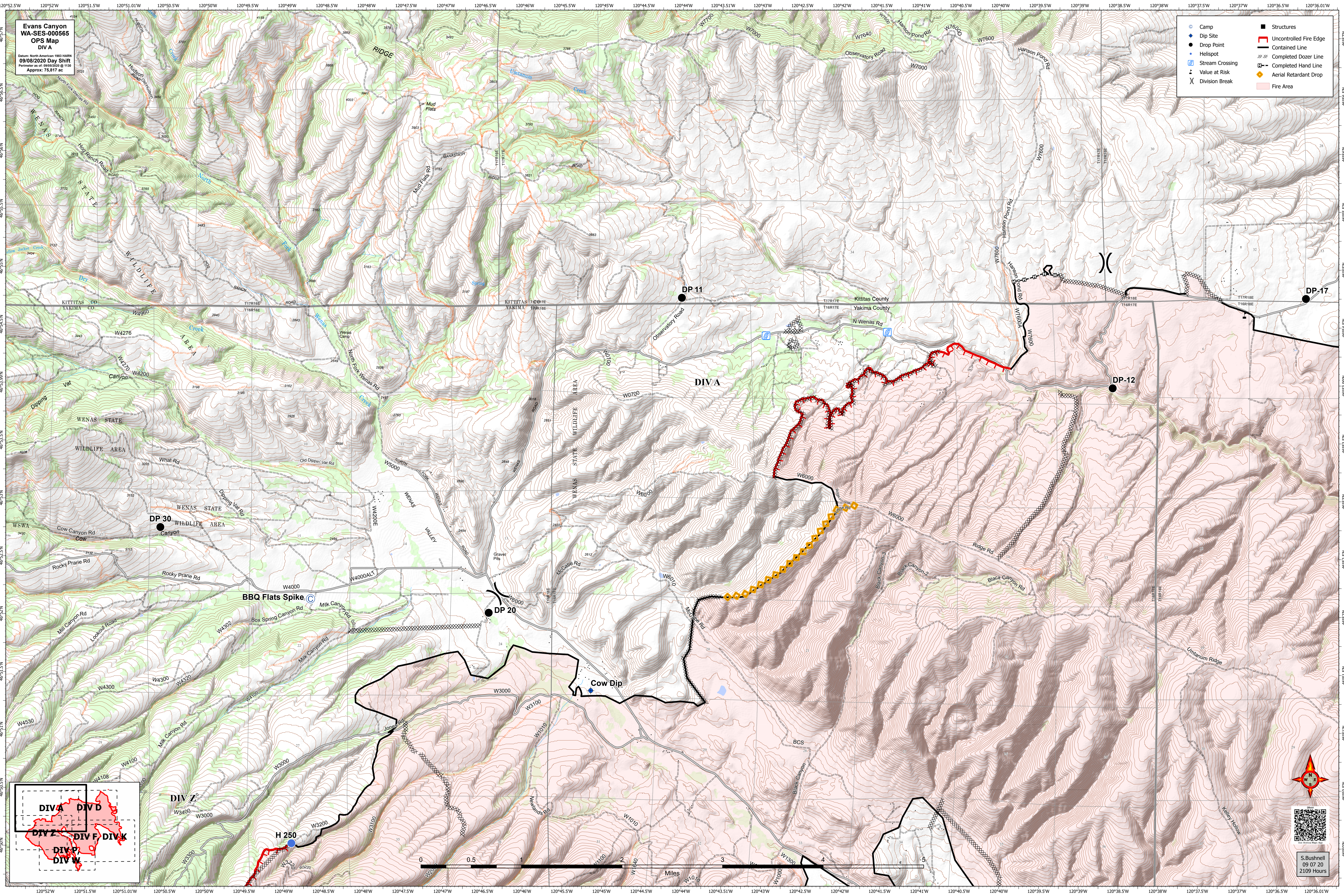


Evans Canyon
WA-SES-000565
OPS Map
DIV A

Date: North American 1983 NAD83
09/08/2020 Day Shift
Perimeter as of: 09/05/2020 @ 1130
Approx: 75,817 ac

- Camp
- Dip Site
- Drop Point
- Helispot
- Stream Crossing
- ⊘ Value at Risk
- ⌘ Division Break
- Structures
- Uncontrolled Fire Edge
- Contained Line
- Completed Dozer Line
- Completed Hand Line
- ◆ Aerial Retardant Drop
- Fire Area



S. Bushnell
09 07 20
2109 Hours