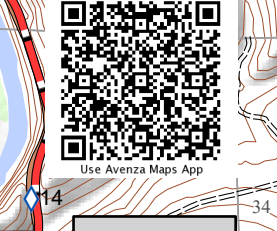
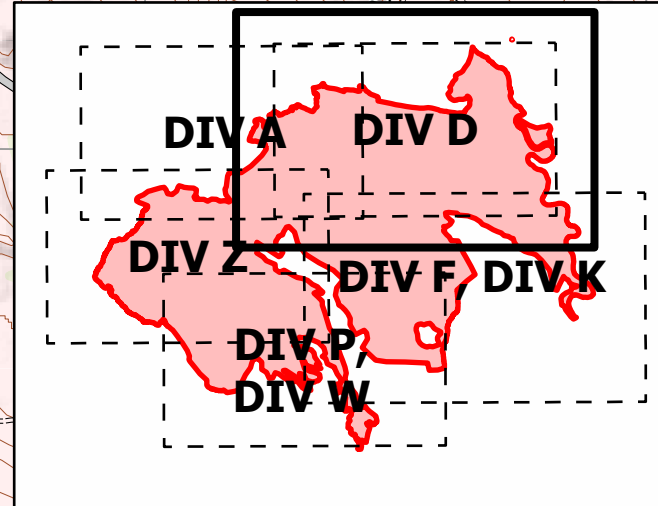
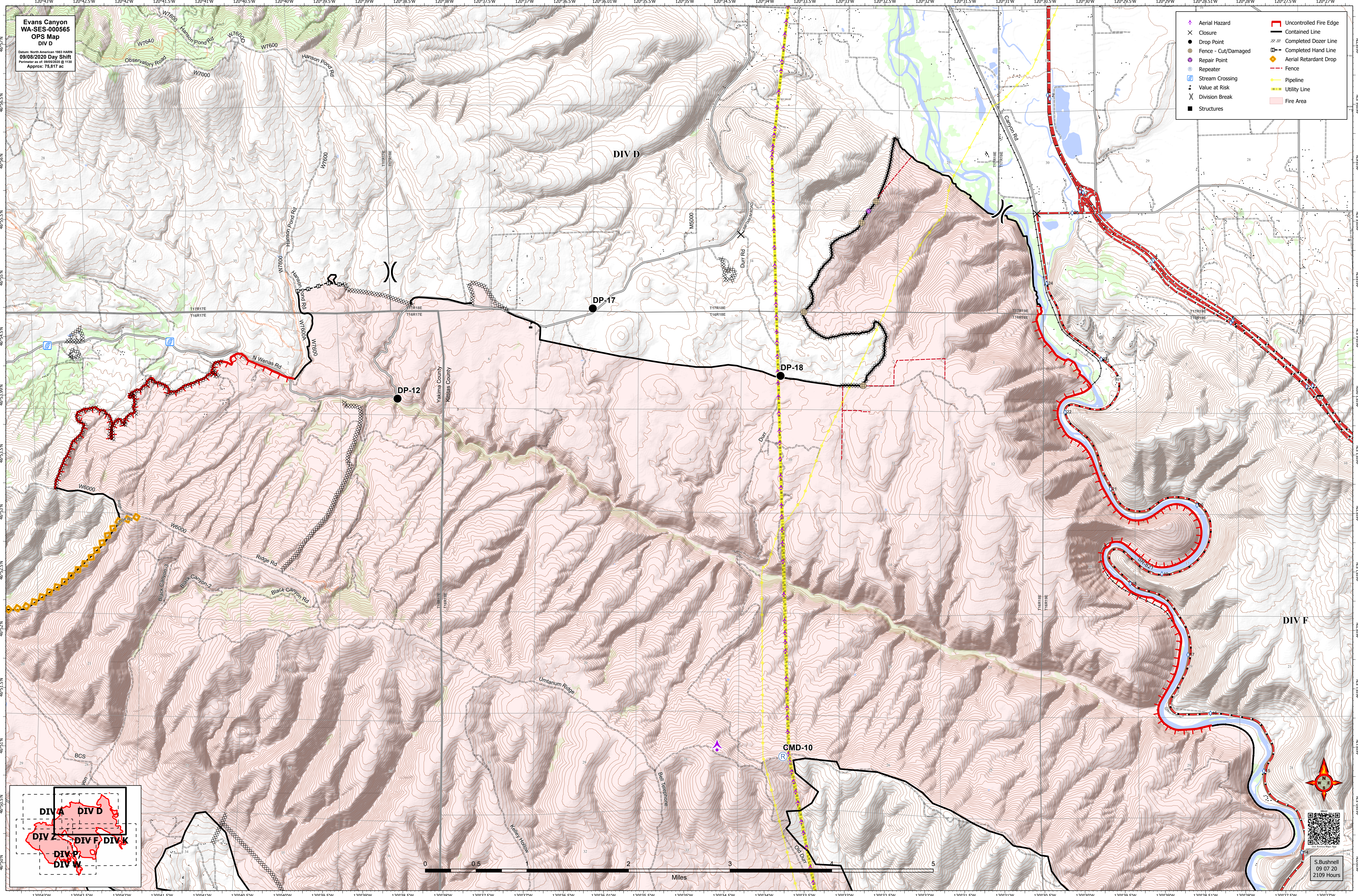


Evans Canyon
WA-SES-00565
OPS Map
DIV D

Date: North American 1983 Mean
09/08/2020 Day Shift
Perimeter as of: 09/05/2020 @ 1130
Approx: 75,817 ac

- Aerial Hazard
- Closure
- Drop Point
- Fence - Cut/Damaged
- Repair Point
- Repeater
- Stream Crossing
- Value at Risk
- Division Break
- Structures
- Uncontrolled Fire Edge
- Contained Line
- Completed Dozer Line
- Completed Hand Line
- Aerial Retardant Drop
- Pipeline
- Utility Line
- Fire Area



S. Bushnell
09 07 20
2109 Hours