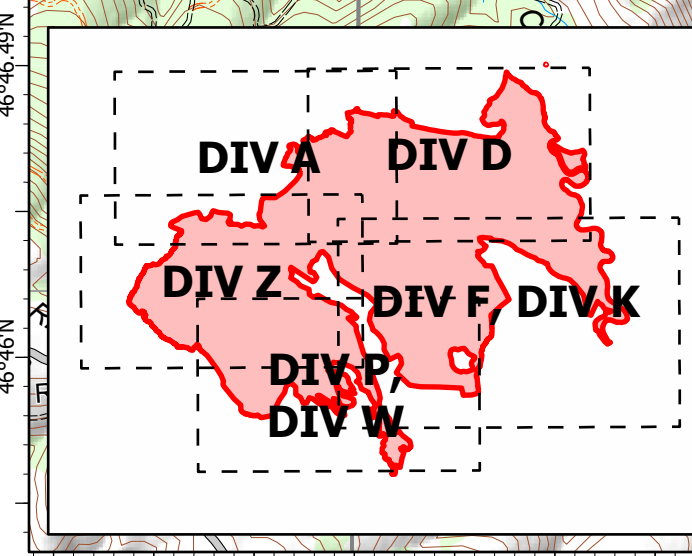


Evans Canyon
WA-SES-00565
OPS Map
DIV Z

Date: North American 1983 NADN
09/08/2020 Day Shift
Perimeter as of: 09/05/2020 @ 1130
Approx: 75,817 ac

- Camp
- Dip Site
- Drop Point
- Helispot
- Repeater
- ⚠ Value at Risk
- ⌘ Division Break
- Structures
- ▬ Uncontrolled Fire Edge
- ▬ Contained Line
- ⊗⊗ Completed Dozer Line
- ◆ Aerial Retardant Drop
- Fire Area



S. Bushnell
09 07 20
2111 Hours



Map labels include: WENAS STATE WILDLIFE AREA, BBQ Flats Spike, Cow Dip, Wenas Dip, Mud Lake Dip, H 250, DP 30, DP 20, DP 10, CMD-7, CMD-8, DIV Z, and various road names like Rocky Prairie Rd, Milk Canyon Rd, and Mud Lake Rd. Contour lines are labeled with elevations such as W6000, W5000, W4000, W3000, W2000, W1000, R4000, R3000, R2000, R1000.