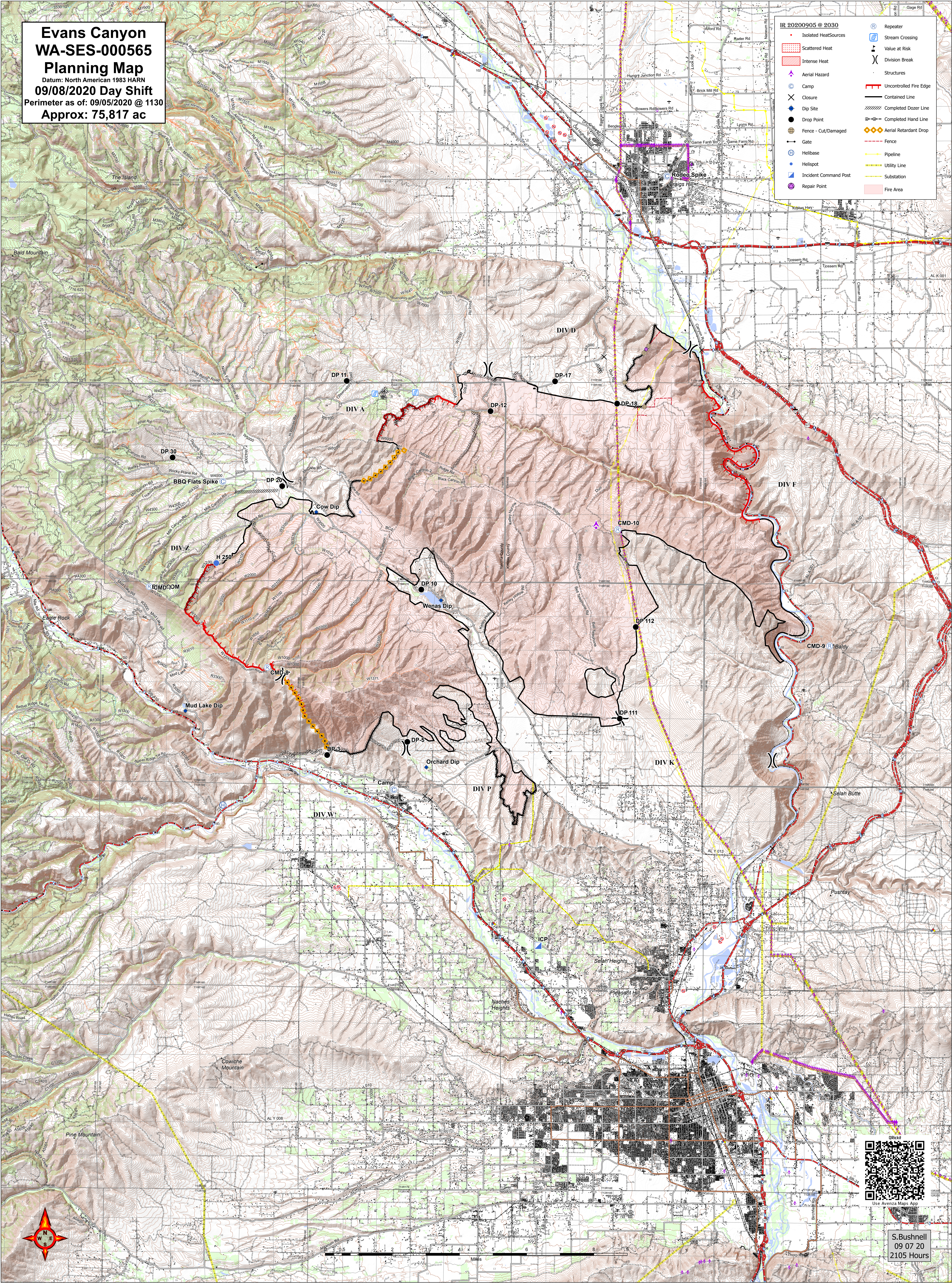


**Evans Canyon
WA-SES-000565
Planning Map**
Datum: North American 1983 HARN
09/08/2020 Day Shift
Perimeter as of: 09/05/2020 @ 1130
Approx: 75,817 ac

IR 20200905 @ 2030

Isolated HeatSources	Repeater
Scattered Heat	Stream Crossing
Intense Heat	Value at Risk
Aerial Hazard	Division Break
Camp	Structures
Closure	Uncontrolled Fire Edge
Dip Site	Contained Line
Drop Point	Completed Dozer Line
Fence - Cut/Damaged	Completed Hand Line
Gate	Aerial Retardant Drop
Helibase	Fence
Helispot	Pipeline
Incident Command Post	Utility Line
Repair Point	Substation
	Fire Area



S. Bushnell
09 07 20
2105 Hours