

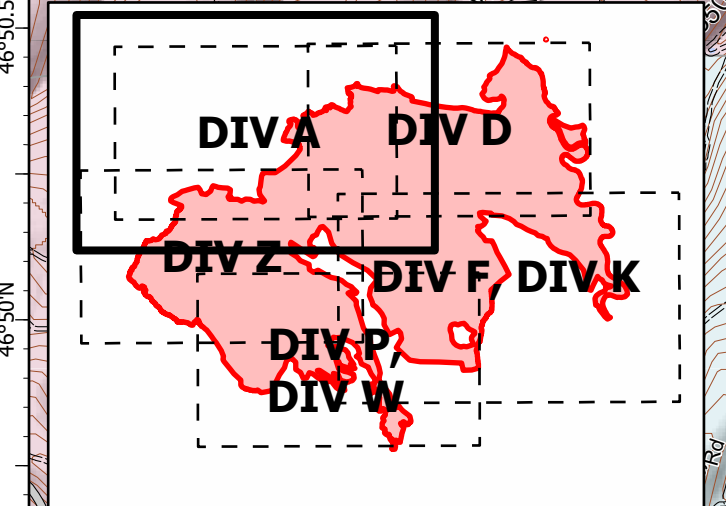
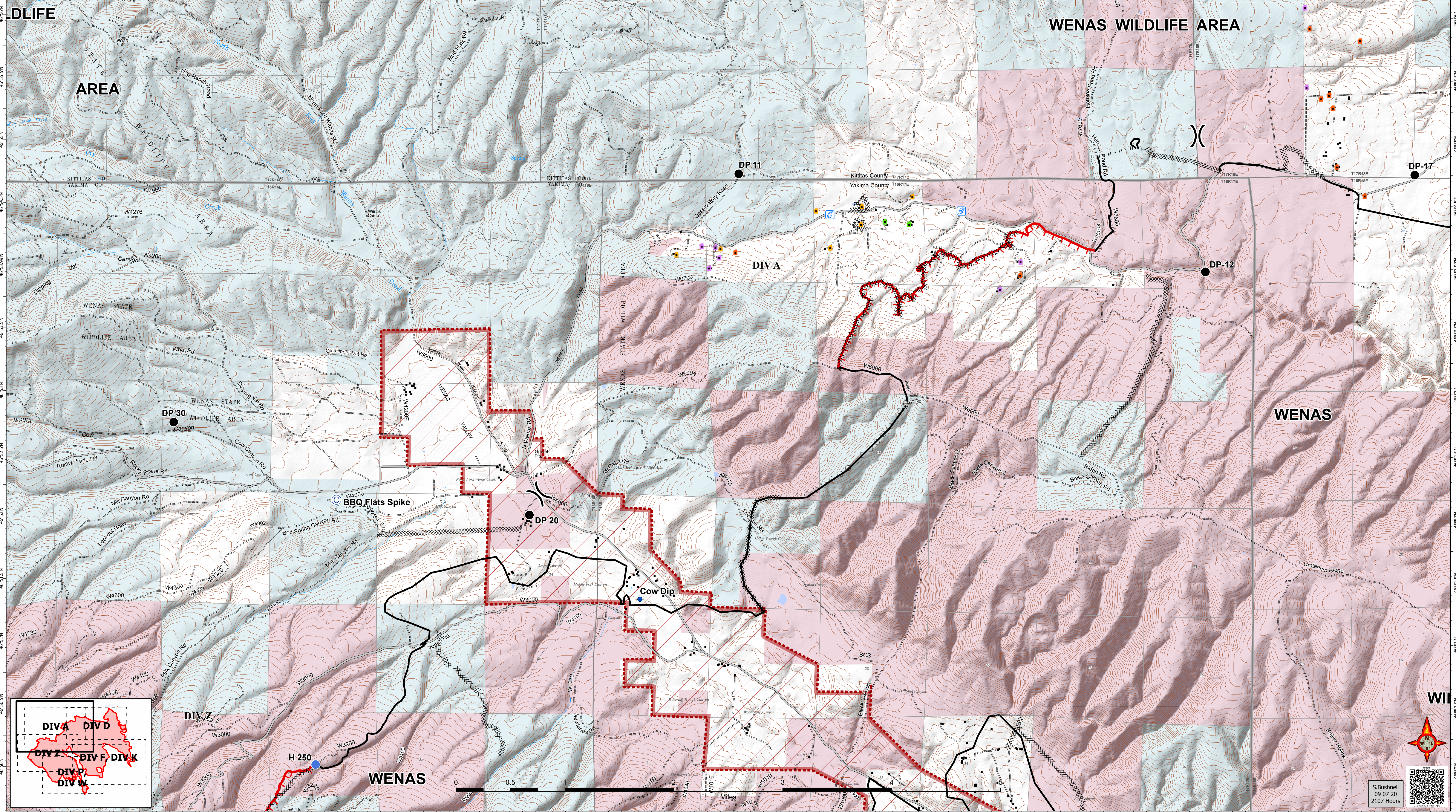
120°52.5'W 120°52'W 120°51.5'W 120°51.01'W 120°50.5'W 120°50'W 120°49.5'W 120°49'W 120°48.5'W 120°48'W 120°47.5'W 120°47'W 120°46.5'W 120°46'W 120°45.5'W 120°45'W 120°44.5'W 120°44'W 120°43.51'W 120°43'W 120°42.5'W 120°42'W 120°41.5'W 120°41'W 120°40.5'W 120°40'W 120°39.5'W 120°39'W 120°38.5'W 120°38'W 120°37.5'W 120°37'W 120°36.5'W 120°36.01'W

Evans Canyon
WA-SES-000565
Structure Assessment
DIV A
Datum: North American 1983 HARN
09/08/2020 Day Shift
Perimeter as of: 09/05/2020 @ 1130
Approx: 75.817 ac

Stand Alone (Low Risk)	Defensible (Moderate Risk)	Non-Defensible (High Risk)	Non-Defensible (Extreme Risk)
<ul style="list-style-type: none"> • Safety Zone present • Requires little or no attention • Will require patrol or homeowner presence after fire passage 	<ul style="list-style-type: none"> • Safety Zone present at or near structure for FF • Structure has a higher probability of ignition without FF intervention 	<ul style="list-style-type: none"> • No Safety Zone present • If time allows, rapid mitigation, apply gel or foam • Set decision point for safe retreat • Go to nearest Safety Zone; return to fire area after fire passage 	<ul style="list-style-type: none"> • No Safety Zone present • Inadequate time for mitigation • If time allows, ensure lives are not threatened • Set decision point for safe retreat • Go to nearest Safety Zone; return to fire area after fire passage

Structure Defensibility	
Green Square	Defensible - Stand Alone
Yellow Square	Defensible - Prep and Hold
Purple Square	Non-Defensible - Prep and Leave
Orange Square	Non-Defensible - Rescue Drive-By
Black Square	Unknown

Blue Circle	Camp	Black Line	Contained Line
Black Circle	Dip Site	Black X	Completed Dozer Line
Black Square	Drop Point	Black H	Completed Hand Line
Blue Square	Helispot	Black Diamond	Aerial Retardant Drop
Blue Circle with W	Stream Crossing	Red Area	Fire Area
Black Square with W	Value at Risk	Light Blue Area	DNR-Managed Lands
Black X	Division Break	Pink Area	WA Dept of Fish and Wildlife
Black Square	Structures	Red Area with Dashed Border	Uncontrolled Fire Edge
Black Square with W	Fire Protection District		



WIL

S. Bushnell
09 07 20
2107 Hours