

**Evans Canyon  
WA-SES-000565  
Structure Assessment  
DIV D**

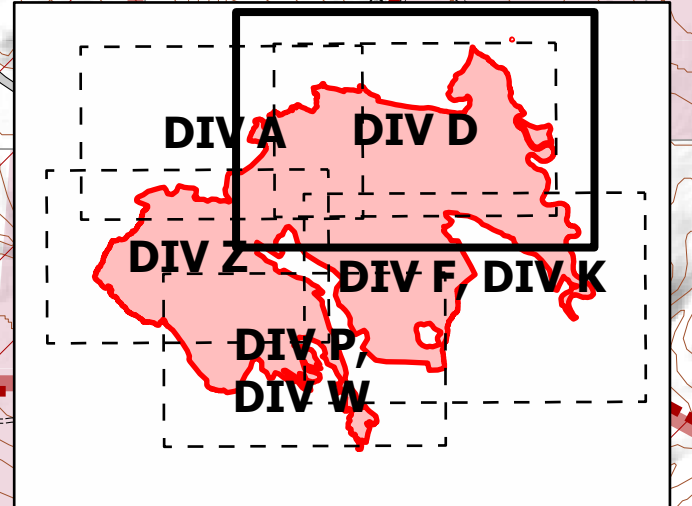
Date: North American 1983 HARN  
09/08/2020 Day Shift  
Perimeter as of: 09/05/2020 @ 1130  
Approx: 75.817 ac

Stand Alone (Low Risk)	Defensible (Moderate Risk)	Non-Defensible (High Risk)	Non-Defensible (Extreme Risk)
<ul style="list-style-type: none"> <li>• Safety Zone present</li> <li>• Requires little or no attention</li> <li>• Will require patrol or homeowner presence after fire passage</li> </ul>	<ul style="list-style-type: none"> <li>• Safety Zone present at or near structure for FF</li> <li>• Structure has a higher probability of ignition without FF intervention</li> </ul>	<ul style="list-style-type: none"> <li>• No Safety Zone present</li> <li>• If time allows, rapid mitigation, apply gel or foam</li> <li>• Set decision point for safe retreat</li> <li>• Go to nearest Safety Zone; return to fire area after fire passage</li> </ul>	<ul style="list-style-type: none"> <li>• No Safety Zone present</li> <li>• Inadequate time for mitigation</li> <li>• If time allows, ensure lives are not threatened</li> <li>• Set decision point for safe retreat</li> <li>• Go to nearest Safety Zone; return to fire area after fire passage</li> </ul>

**Structure Defensibility**

- Defensible - Stand Alone
- Defensible - Prep and Hold
- Non-Defensible - Prep and Leave
- Non-Defensible - Rescue Drive-By
- Unknown

- Aerial Hazard
- Closure
- Drop Point
- Fence - Cut/Damaged
- Repair Point
- Repeater
- Stream Crossing
- Value at Risk
- Division Break
- Structures
- Uncontrolled Fire Edge
- Contained Line
- Completed Dozer Line
- Completed Hand Line
- Aerial Retardant Drop
- Fence
- Pipeline
- Utility Line
- Fire Area
- DNR-Managed Lands
- WA State Parks and Recreation Commission
- WA Dept of Fish and Wildlife
- US Bureau of Land Management
- County, Municipal or Other Lands
- Fire Protection District



S. Bushnell  
09 07 20  
2109 Hours