

120°54'W 120°53.5'W 120°53'W 120°52.5'W 120°52'W 120°51.5'W 120°51.01'W 120°50.5'W 120°50'W 120°49.5'W 120°49'W 120°48.5'W 120°48'W 120°47.5'W 120°47'W 120°46.5'W 120°46'W 120°45.5'W 120°45'W 120°44.5'W 120°44'W 120°43.5'W 120°43'W 120°42.5'W 120°42'W 120°41.5'W 120°41'W 120°40.5'W 120°40'W 120°39.5'W 120°39'W 120°38.5'W 120°38'W 120°37.5'W

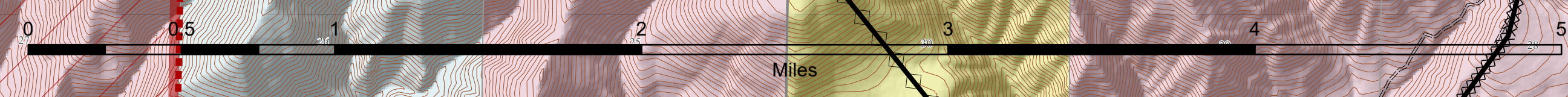
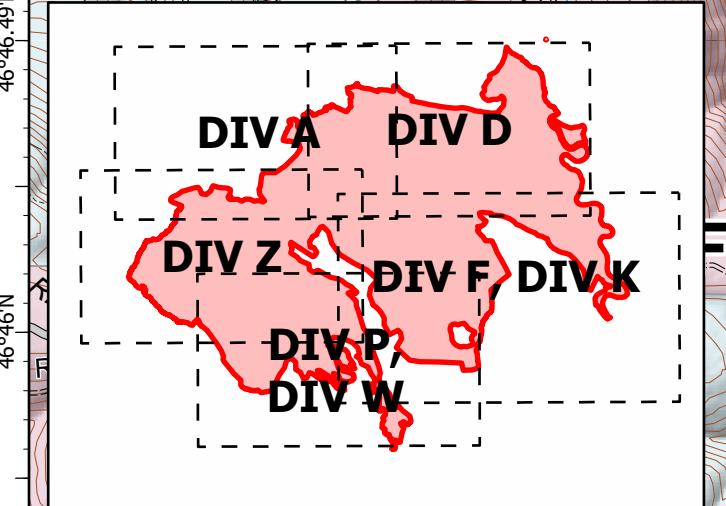
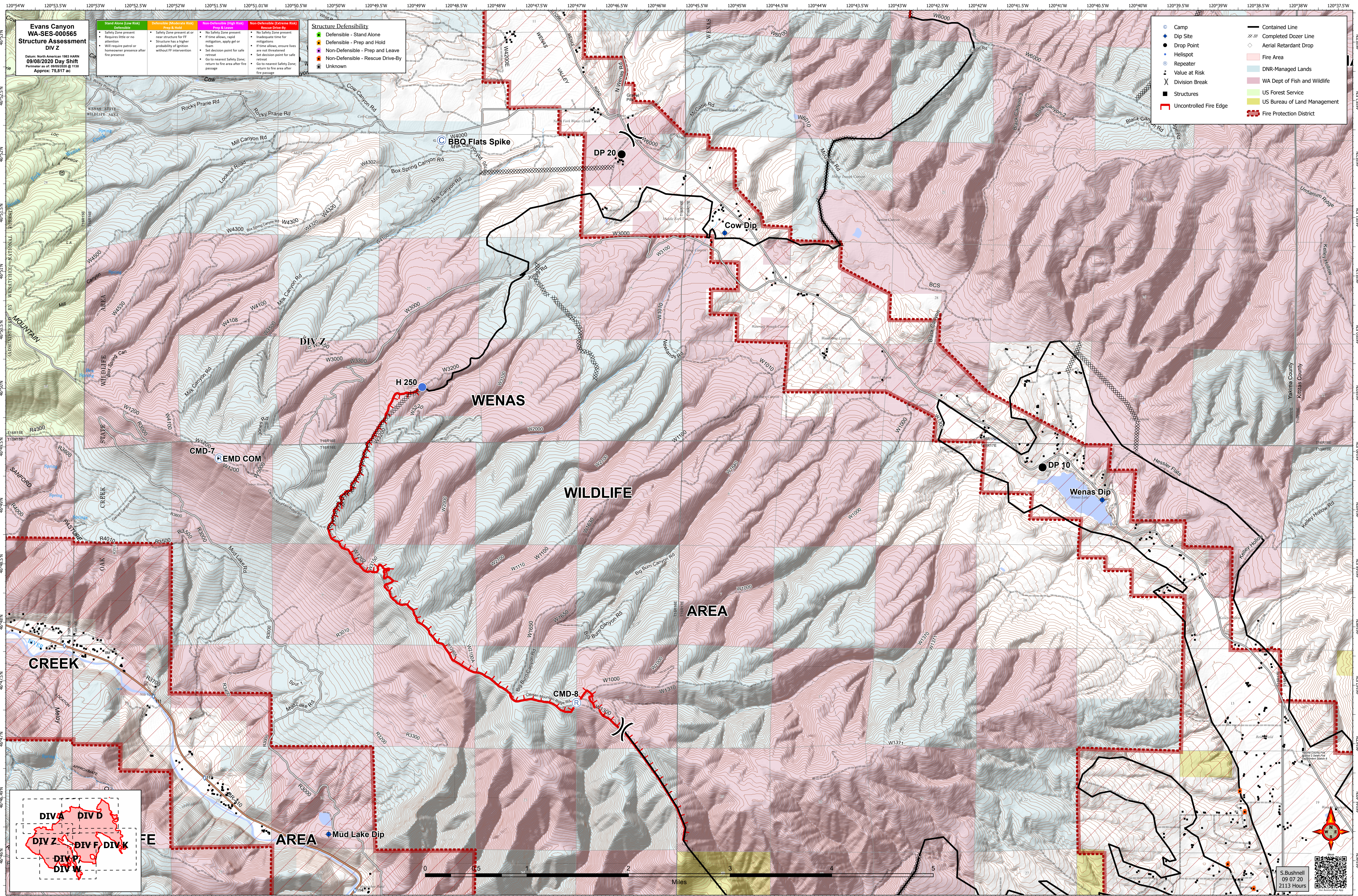
46°52'N 46°51.5'N 46°51'N 46°50.5'N 46°50'N 46°49.5'N 46°49'N 46°48.5'N 46°48'N 46°47.5'N 46°47'N 46°46.5'N 46°46'N 46°45.5'N 46°45'N 46°44.5'N 46°44'N 46°43.5'N 46°43'N 46°42.5'N 46°42'N 46°41.5'N 46°41'N 46°40.5'N 46°40'N 46°39.5'N 46°39'N 46°38.5'N 46°38'N 46°37.5'N

**Evans Canyon
WA-SES-000565
Structure Assessment
DIV Z**
Date: North American 1983 HARN
09/08/2020 Day Shift
Perimeter as of: 09/05/2020 @ 1130
Approx: 75,817 ac

Stand Alone (Low Risk)	Defensible (Moderate Risk)	Non-Defensible (High Risk)	Non-Defensible (Extreme Risk)
<ul style="list-style-type: none"> Safety Zone present Requires little or no attention Will require patrol or homeowner presence after fire passage 	<ul style="list-style-type: none"> Safety Zone present at or near structure for FF Structure has a higher probability of ignition without FF intervention 	<ul style="list-style-type: none"> No Safety Zone present If time allows, rapid mitigation, apply gel or foam Set decision point for safe retreat Go to nearest Safety Zone; return to fire area after fire passage 	<ul style="list-style-type: none"> No Safety Zone present Inadequate time for mitigation If time allows, ensure lives are not threatened Set decision point for safe retreat Go to nearest Safety Zone; return to fire area after fire passage

Structure Defensibility
<ul style="list-style-type: none"> Defensible - Stand Alone Defensible - Prep and Hold Non-Defensible - Prep and Leave Non-Defensible - Rescue Drive-By Unknown

● Camp	— Contained Line
● Dip Site	— Completed Dozer Line
● Drop Point	◇ Aerial Retardant Drop
● Hellsport	■ Fire Area
● Repeater	■ DNR-Managed Lands
● Value at Risk	■ WA Dept of Fish and Wildlife
⌘ Division Break	■ US Forest Service
■ Structures	■ US Bureau of Land Management
— Uncontrolled Fire Edge	■ Fire Protection District



S. Bushnell
09 07 20
2113 Hours