

# Evans Canyon WA-SES-000565 Rehab Map

Datum: North American 1983 HARN

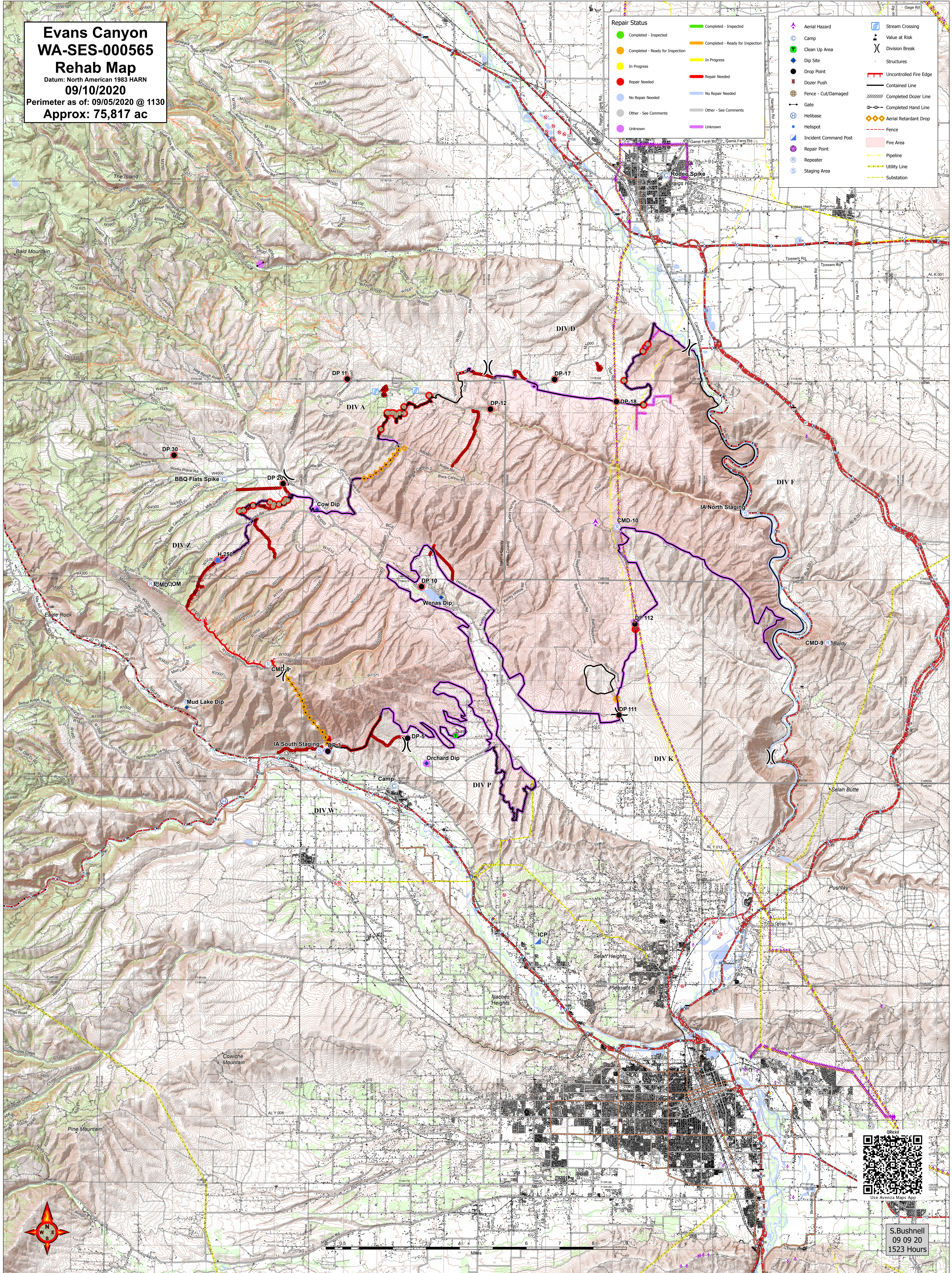
09/10/2020

Perimeter as of: 09/05/2020 @ 1130

Approx: 75,817 ac

Repair Status	
<span style="color: green;">●</span> Completed - Inspected	<span style="color: green;">■</span> Completed - Inspected
<span style="color: orange;">●</span> Completed - Ready for Inspection	<span style="color: orange;">■</span> Completed - Ready for Inspection
<span style="color: yellow;">●</span> In Progress	<span style="color: yellow;">■</span> In Progress
<span style="color: red;">●</span> Repair Needed	<span style="color: red;">■</span> Repair Needed
<span style="color: blue;">●</span> No Repair Needed	<span style="color: blue;">■</span> No Repair Needed
<span style="color: grey;">●</span> Other - See Comments	<span style="color: grey;">■</span> Other - See Comments
<span style="color: purple;">●</span> Unknown	<span style="color: purple;">■</span> Unknown

	Stream Crossing
	Value at Risk
	Division Break
	Structures
	Uncontrolled Fire Edge
	Contained Line
	Completed Dozer Line
	Completed Hand Line
	Aerial Retardant Drop
	Fence
	Fire Area
	Pipeline
	Utility Line
	Substation



S. Bushnell  
09 09 20  
1523 Hours