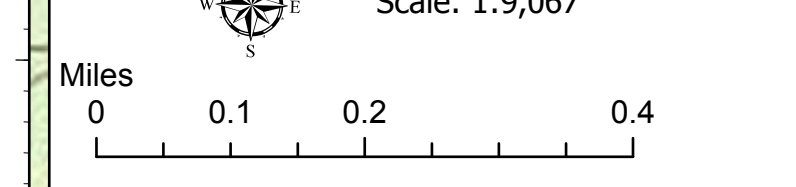
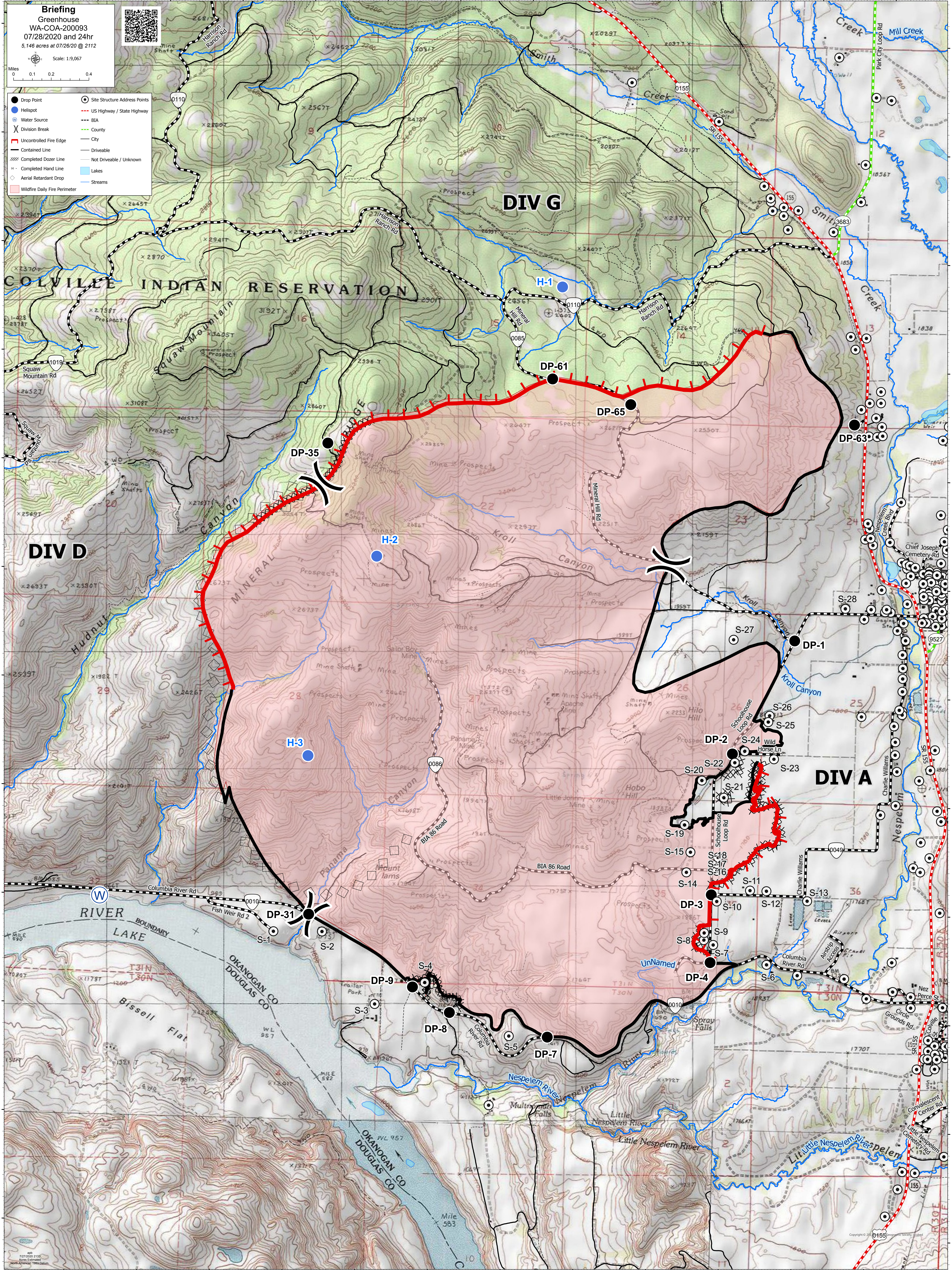


Briefing
 Greenhouse
 WA-COA-200093
 07/28/2020 and 24hr
 5,146 acres at 07/26/20 @ 2112



- Drop Point
- HeliSpot
- Water Source
- ⌘ Division Break
- Uncontrolled Fire Edge
- Contained Line
- ⊞ Completed Dozer Line
- Completed Hand Line
- ◇ Aerial Retardant Drop
- Wildfire Daily Fire Perimeter
- ⊙ Site Structure Address Points
- US Highway / State Highway
- BIA
- County
- City
- Driveable
- Not Driveable / Unknown
- Lakes
- Streams



119°5'W 119°4'W 119°3.5'W 119°3'W 119°2.5'W 119°2'W 119°1.5'W 119°1'W 119°0.5'W 119°W 118°59.5'W 118°59'W 118°58.5'W