

AIR OPS Map

Palmer Fire

SPD-1947

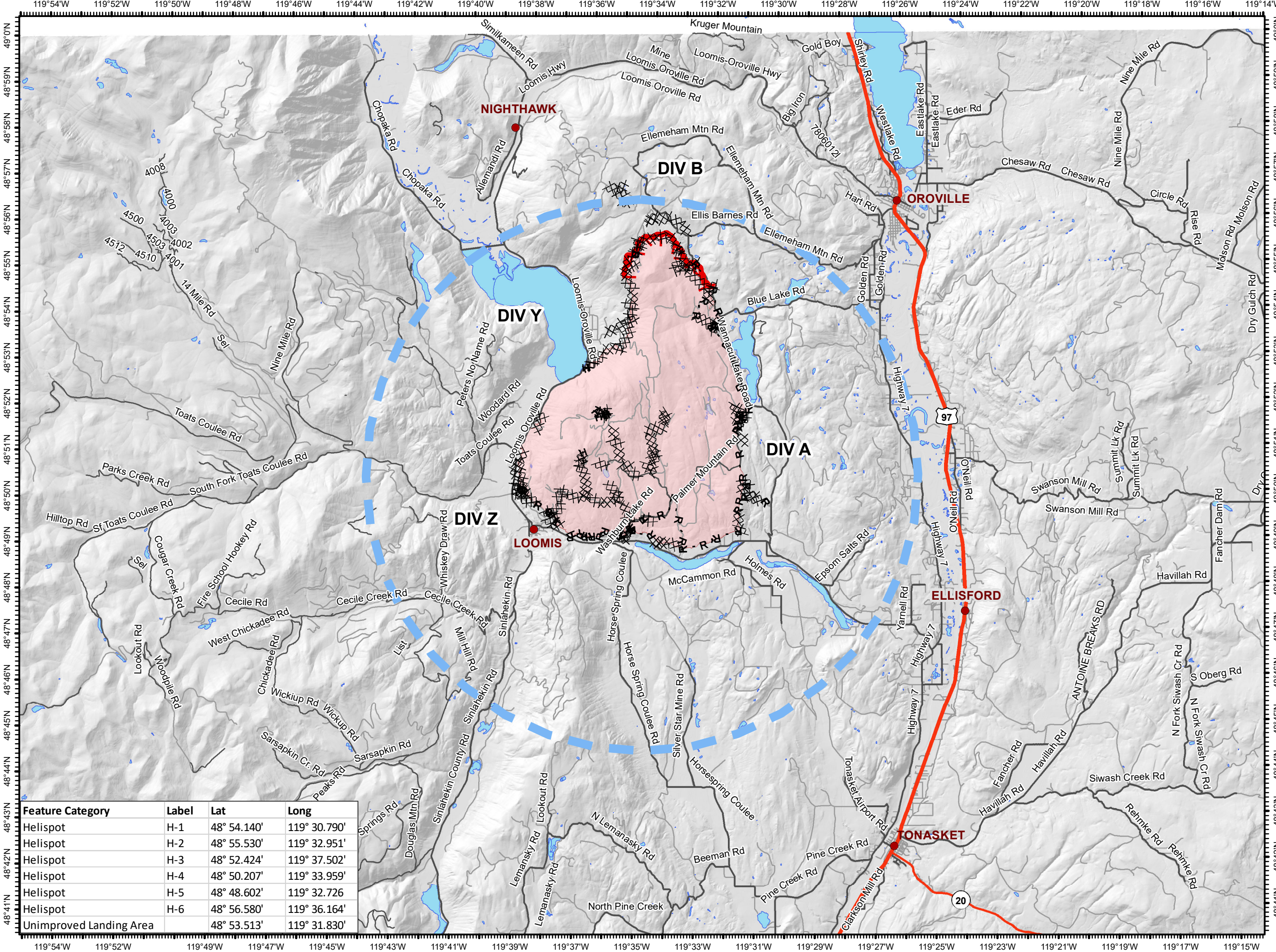
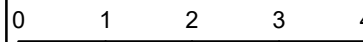
8/29/2020

Appx 17,988 ac at
8/24/2020 2100

-  Camp
-  Helispot
-  Incident Base
-  Incident Command Post
-  Repeater
-  Staging Area
-  Unimproved Landing Area
-  Water Source
-  Division Break
-  US Highway
-  State Highway
-  County Road
-  Major Road
-  Uncontrolled Fire Edge
-  Contained Line
-  Completed Dozer Line
-  Completed Hand Line
-  Road as Completed Line
-  Temporary Flight Restriction
-  Wildfire Daily Fire Perimeter



Miles



Feature Category	Label	Lat	Long
Helispot	H-1	48° 54.140'	119° 30.790'
Helispot	H-2	48° 55.530'	119° 32.951'
Helispot	H-3	48° 52.424'	119° 37.502'
Helispot	H-4	48° 50.207'	119° 33.959'
Helispot	H-5	48° 48.602'	119° 32.726'
Helispot	H-6	48° 56.580'	119° 36.164'
Unimproved Landing Area		48° 53.513'	119° 31.830'