



119°59'W 119°57'W 119°55'W 119°52'W 119°50'W 119°48'W 119°46'W 119°44'W 119°42'W 119°40'W 119°38'W 119°36'W 119°34'W 119°32'W 119°30'W 119°28'W 119°26'W 119°24'W 119°22'W 119°20'W 119°18'W 119°16'W 119°14'W 119°12'W

Briefing

Palmer fire

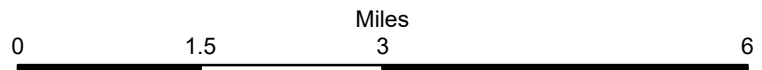
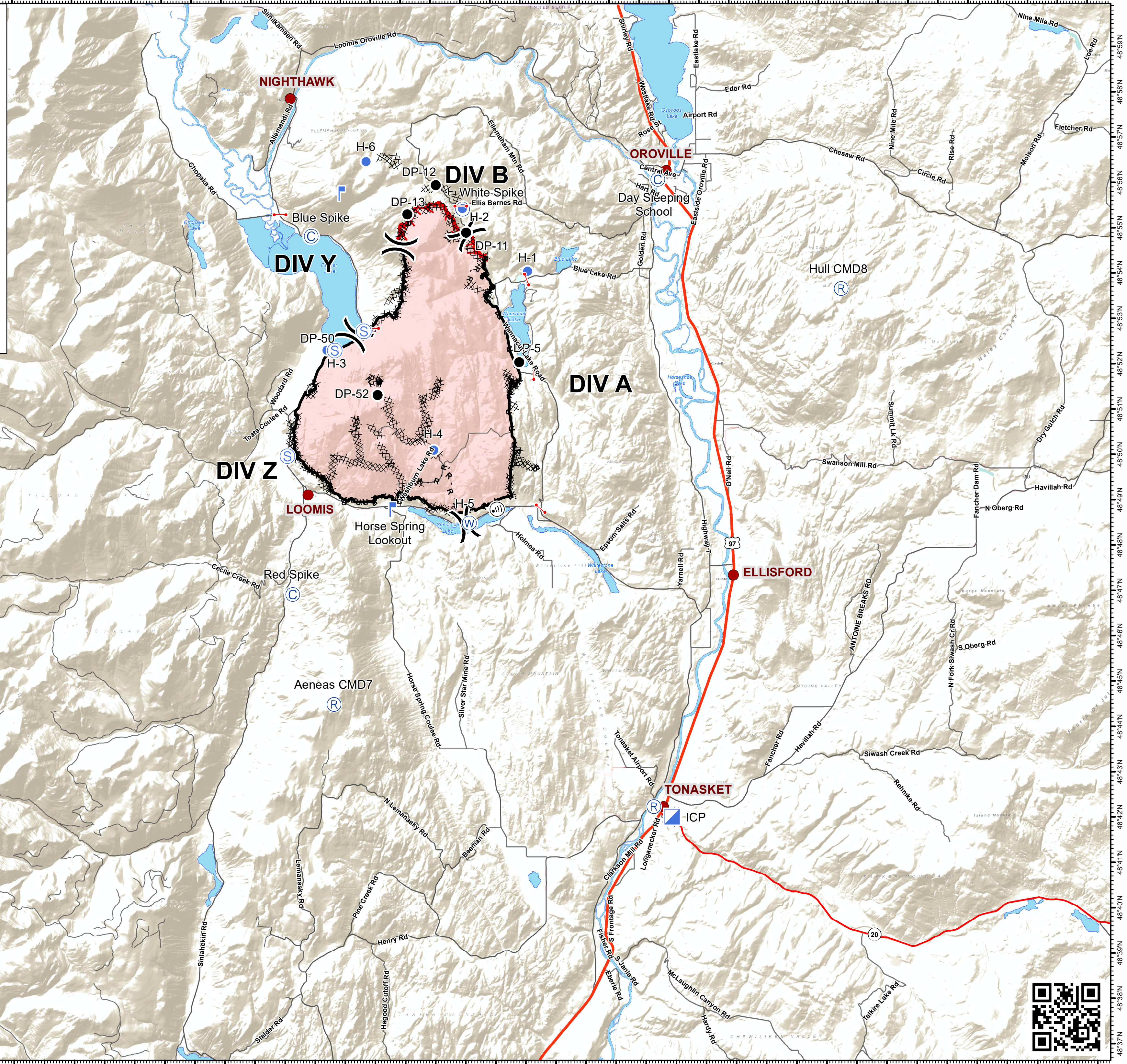
WA-SPD-001947

August 29, 2020

Ⓢ	Camp	▬	Uncontrolled Fire Edge
●	Drop Point	▬	Contained Line
—	Gate	▬	Completed Dozer Line
Ⓛ	Unimproved Landing Area	H · H ·	Completed Hand Line
Ⓛ	Helispot	R · R ·	Road as Completed Line
Ⓛ	Incident	▬	US Highway
Ⓛ	Command Post	▬	State Highway
Ⓛ	Internet Access	▬	County Road
Ⓛ	Lookout	▬	Major Road
Ⓛ	Repeater	▬	Wildfire Daily Fire Perimeter
Ⓛ	Staging Area		
Ⓛ	Water Source		
Ⓛ	Division Break		

Approx. 17,988 acres at 8/24/2020 2100 hrs.

119°59'W 119°57'W 119°55'W 119°52'W 119°50'W 119°48'W 119°46'W 119°44'W 119°42'W 119°40'W 119°38'W 119°36'W 119°34'W 119°32'W 119°30'W 119°28'W 119°26'W 119°24'W 119°22'W 119°20'W 119°18'W 119°16'W 119°14'W 119°12'W