

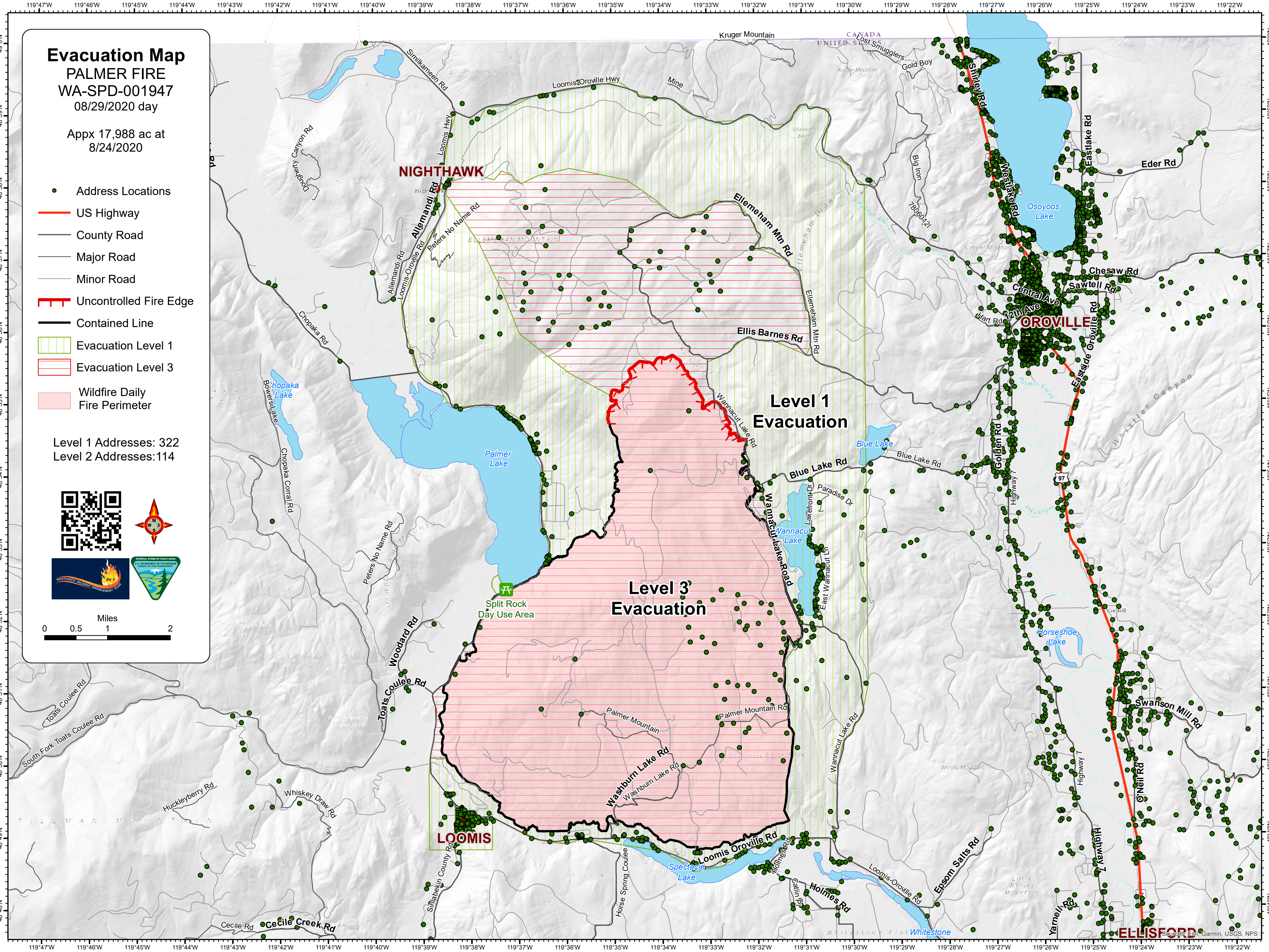
Evacuation Map

PALMER FIRE
WA-SPD-001947
08/29/2020 day

Appx 17,988 ac at
8/24/2020

- Address Locations
- US Highway
- County Road
- Major Road
- Minor Road
- Uncontrolled Fire Edge
- Contained Line
- ▨ Evacuation Level 1
- ▨ Evacuation Level 3
- Wildfire Daily Fire Perimeter

Level 1 Addresses: 322
Level 2 Addresses: 114



NIGHTHAWK

OROVILLE

LOOMIS

ELLISFORD

**Level 1
Evacuation**

**Level 3
Evacuation**

Split Rock
Day Use Area

Sources: Esri, Garmin, USGS, NPS