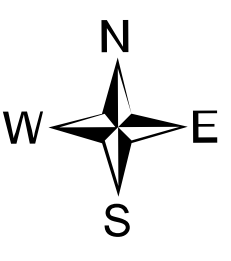


119°50'W 119°48'W 119°46'W 119°44'W 119°42'W 119°40'W 119°38'W 119°36'W 119°34'W 119°32'W 119°30'W 119°28'W 119°26'W 119°24'W 119°22'W 119°20'W

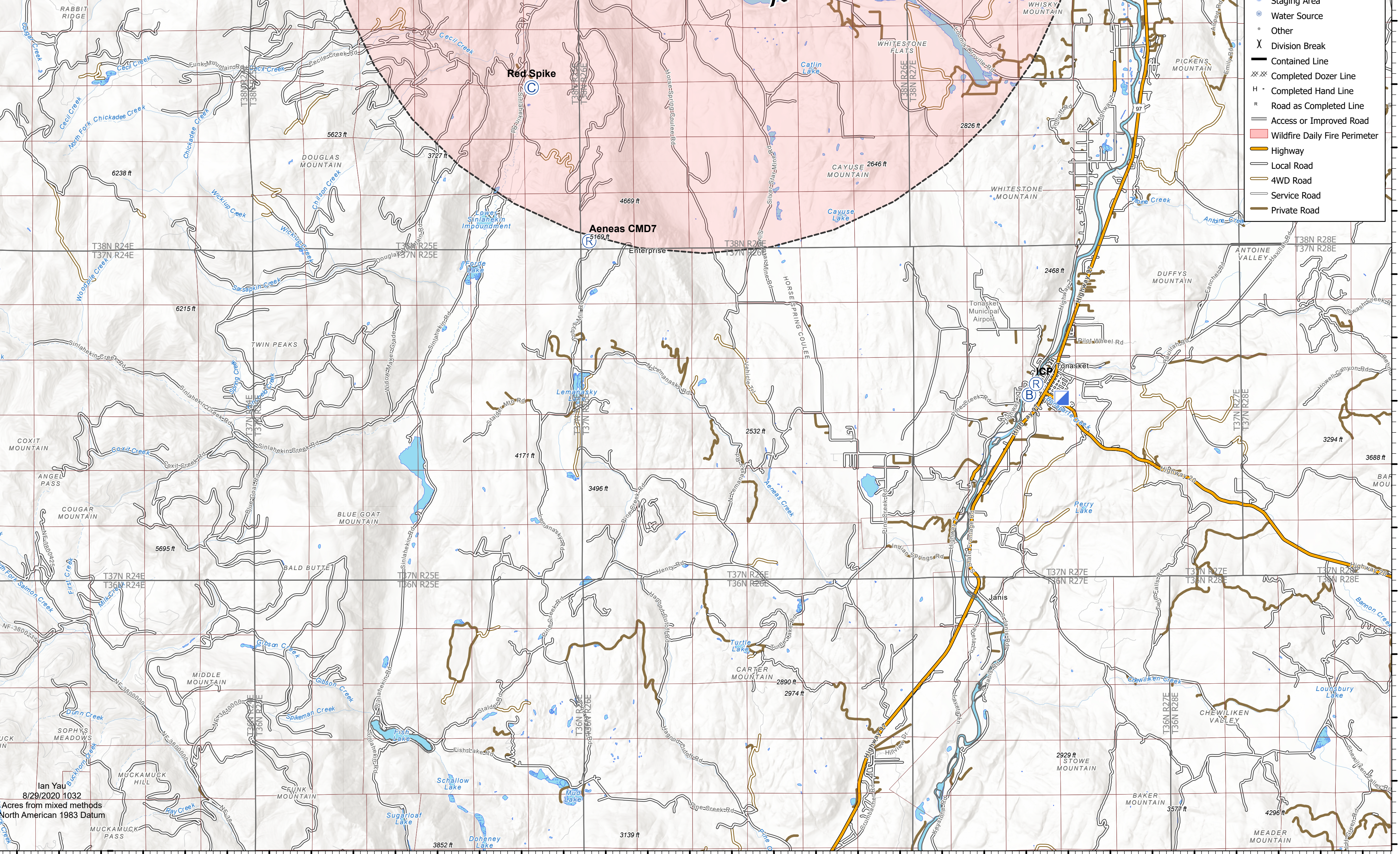
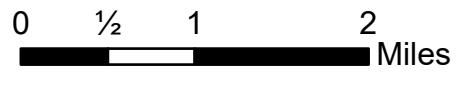


IA - South

Palmer Fire
WA-SPD 001947
August 29, 2020



Approx. 17,988 acres at 8/24/2020 2100hr



- Palmer IA Boundary
- Camp
- Drop Point
- Gate
- Hazard
- Helispot
- Incident Base
- Incident Command Post
- Internet Access
- Lookout
- Repeater
- Staging Area
- Water Source
- Other
- Division Break
- Contained Line
- Completed Dozer Line
- Completed Hand Line
- Road as Completed Line
- Access or Improved Road
- Wildfire Daily Fire Perimeter
- Highway
- Local Road
- 4WD Road
- Service Road
- Private Road

119°50'W 119°48'W 119°46'W 119°44'W 119°42'W 119°40'W 119°38'W 119°36'W 119°34'W 119°32'W 119°30'W 119°28'W 119°26'W 119°24'W 119°22'W 119°20'W

Ian Yau
8/29/2020 1032
Acres from mixed methods
North American 1983 Datum