

Pump Locations

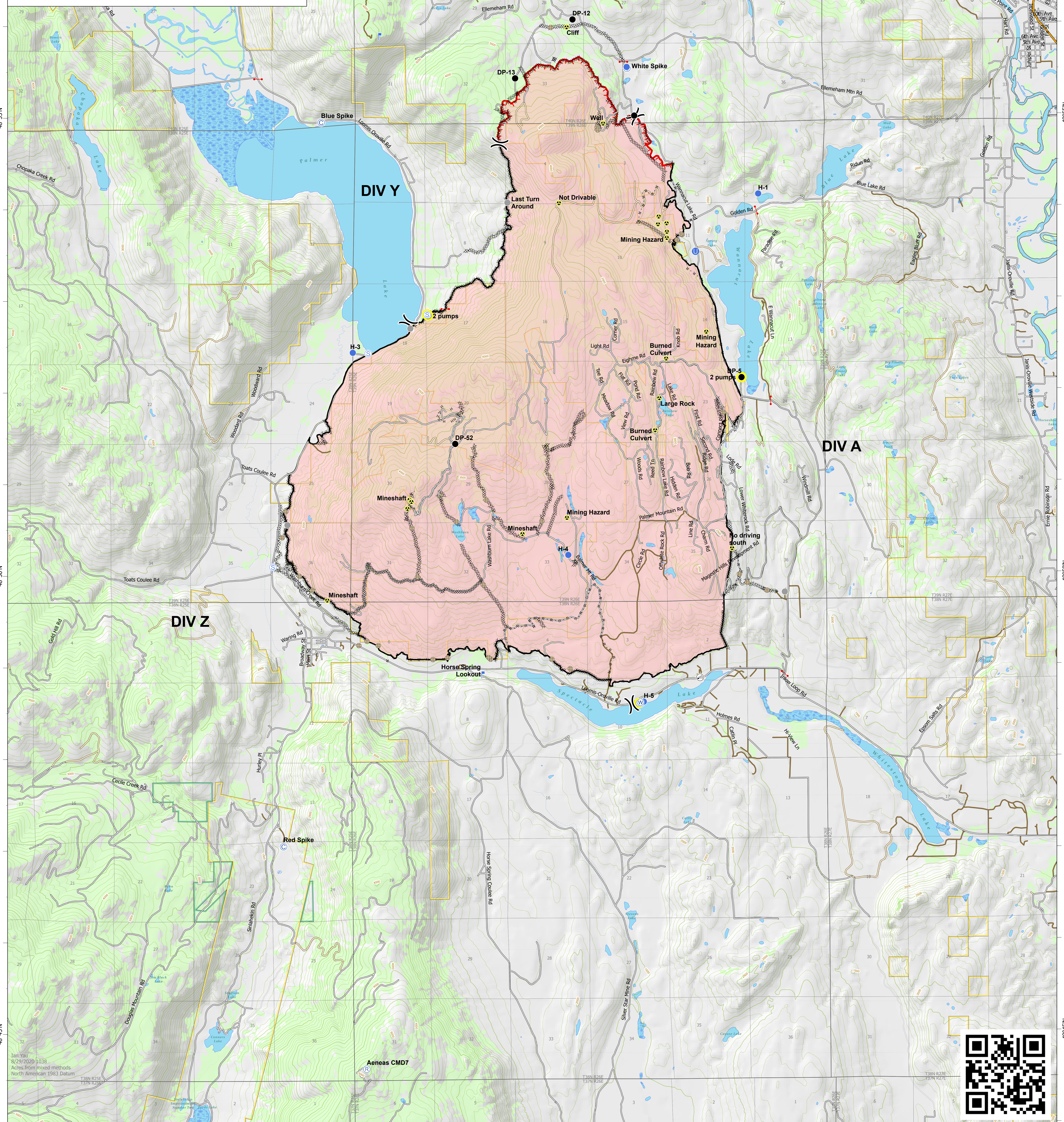
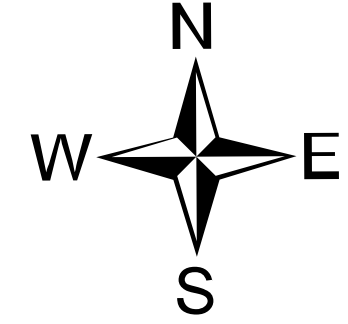
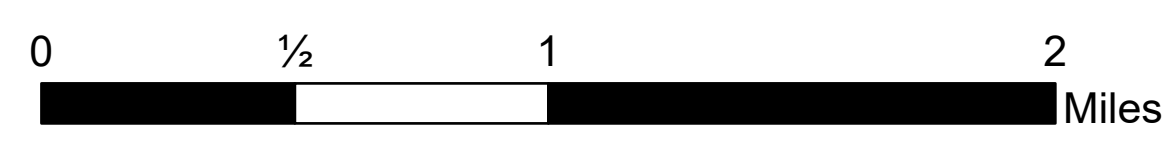


Palmer Fire
WA-SPD 001947
August 29, 2020



- Pump Location (Highlighted)
- P Pump
- O Other Property
- W Water Tank
- C Camp
- Drop Point
- Fence - Cut/Damaged
- Gate
- Hazard
- Unimproved Landing Area
- Helispot
- I Internet Access
- L Lookout
- R Repeater
- S Staging Area
- W Water Source
- Other
-) Division Break
-) Uncontrolled Fire Edge
-) Contained Line
-) Completed Dozer Line
-) Completed Hand Line
- Road as Completed Line
- Access or Improved Road
- Wildfire Daily Fire Perimeter
- Bureau of Land Management
- Fish and Wildlife Service
- Highway
- Local Road
- 4WD Road
- Service Road
- Alley
- Private Road

Approx. 17,988 acres at 8/24/2020 2100hr



48°55'N

48°54'N

48°53'N

48°55'N

48°54'N

48°53'N

Jan 1980
8/29/2020 1038
Acres from mixed methods
North American 1983 Datum

Aeneas CMD7

