

Repair

Palmer fire

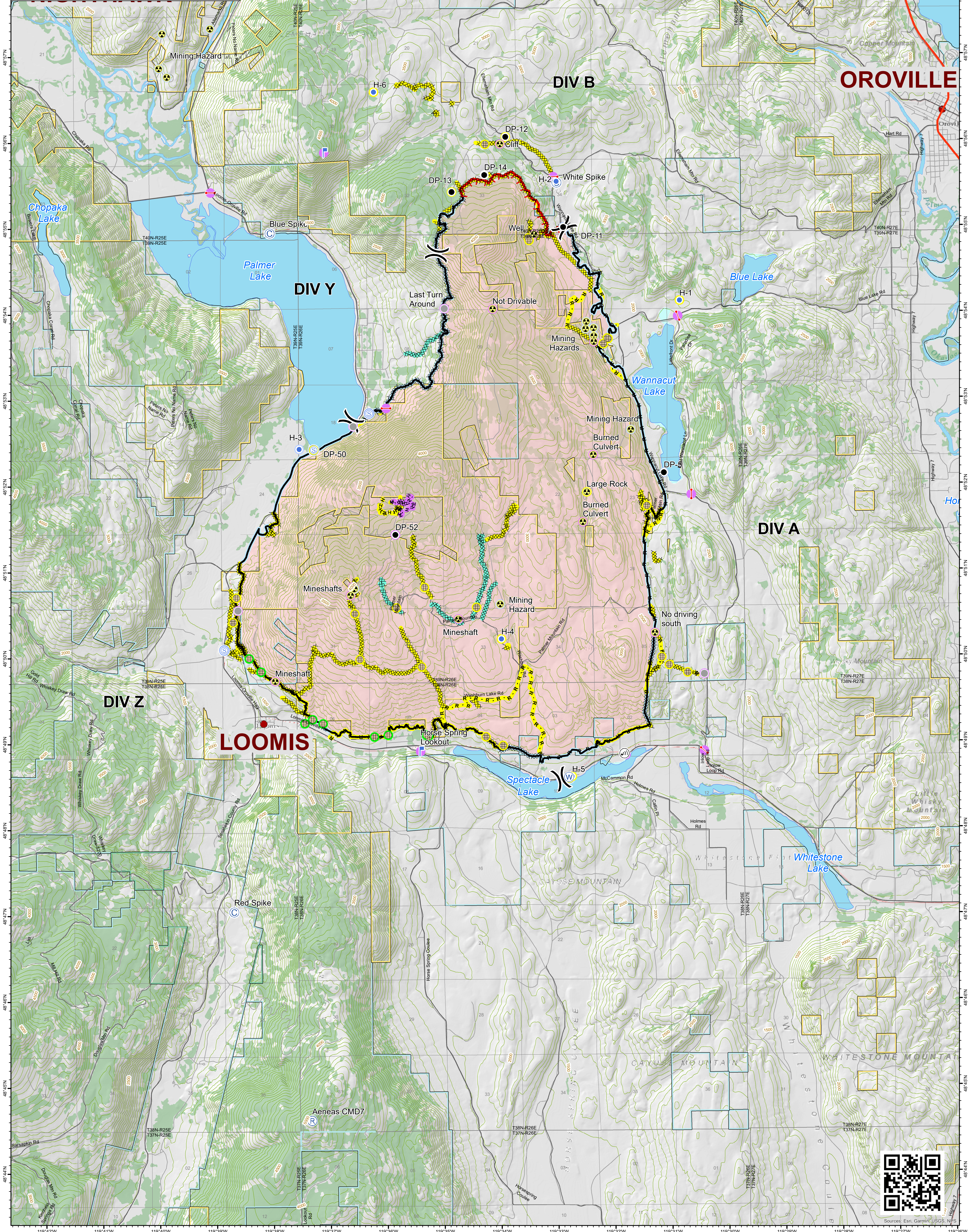
WA-SPD-001947

August 30, 2020

● Completed - Inspected (9)	● Helispot (6)	▬ Uncontrolled Fire Edge
● Completed - Ready for Inspection (0)	Ⓜ Internet Access (1)	▬ Contained Line
● Repair Needed (32)	▬ Lookout (2)	▬ Completed Dozer Line
● No Repair Needed (26)	Ⓡ Repeater (1)	▬ H - H Completed Hand Line
● Unknown (26)	Ⓢ Staging Area (4)	▬ R - R Road as Completed Line
● Camp (3)	Ⓦ Water Source (1)	▬ US Highway
● Drop Point (7)	● Other (4)	▬ County Road
Ⓜ Fence - Cut/Damaged (30)	▬ Division Break (4)	▬ Major Road
▬ Gate (6)		▬ Minor Road
⚠ Hazard (25)		▬ Bureau of Land Management
		▬ Fish and Wildlife Service
		▬ State Lands
		▬ Wildfire Daily Fire Perimeter

0 0.5 1 2 Miles

Approx. 17,988 acres at 60x6000 resolution



Sources: Esri, Garmin, USGS, NPS