

# Air Ops Map

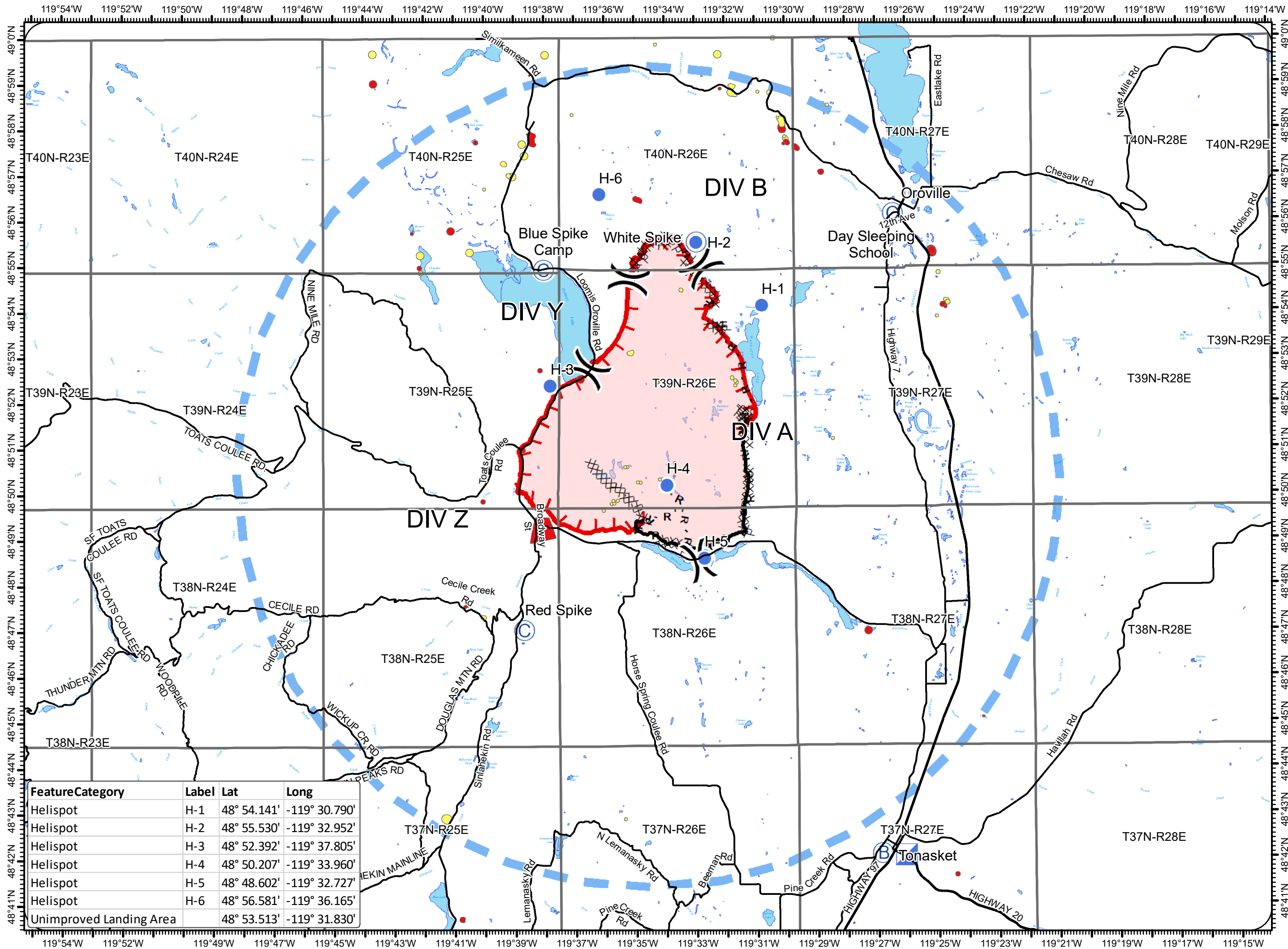
## Palmer Fire

### SPD-1947

8/24/2020

Appx 18,077 ac at  
8/23/2020 2100

-  Light-Duty Road
-  Highway
- Archeological Restrictions**
-  No Retardant, Water OK
-  Limit Retardant, Water OK
-  Camp
-  Helispot
-  Incident Base
-  Incident Command Post
-  Staging Area
-  Division Break
-  Uncontrolled Fire Edge
-  Contained Line
-  Completed Dozer Line
-  Completed Hand Line
-  Road as Completed Line
-  Temporary Flight Restriction
-  Wildfire Daily Fire Perimeter



FeatureCategory	Label	Lat	Long
Helispot	H-1	48° 54.141'	-119° 30.790'
Helispot	H-2	48° 55.530'	-119° 32.952'
Helispot	H-3	48° 52.392'	-119° 37.805'
Helispot	H-4	48° 50.207'	-119° 33.960'
Helispot	H-5	48° 48.602'	-119° 32.727'
Helispot	H-6	48° 56.581'	-119° 36.165'
Unimproved Landing Area		48° 53.513'	-119° 31.830'