

# IAP Map

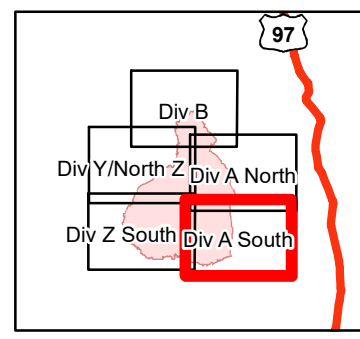
## Palmer Fire




### SPD-1947

8/27/2020

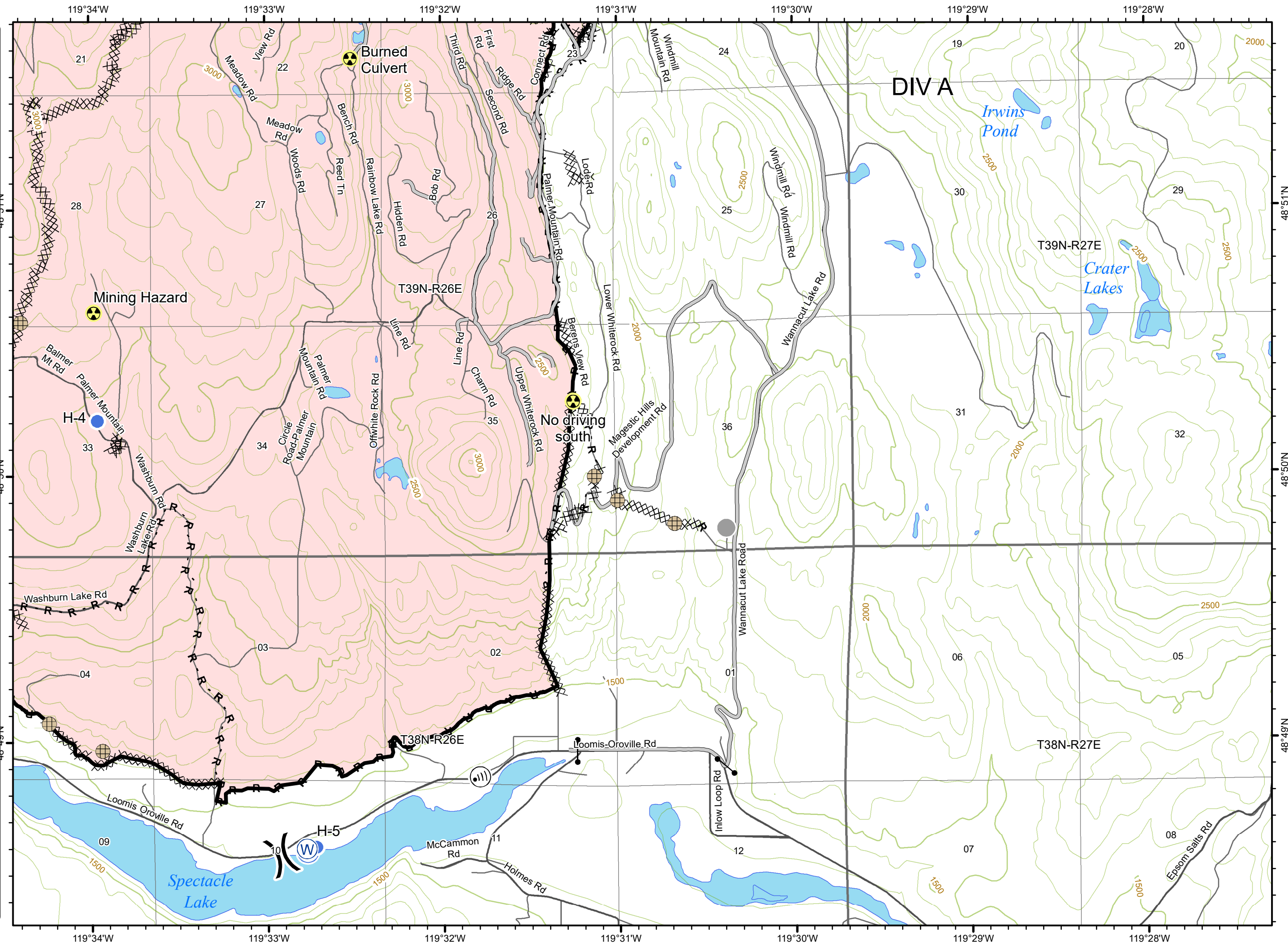
Appx 17,735 ac at  
8/24/2020 2100

-  Fence - Cut/Damaged
-  Gate
-  Hazard
-  Helispot
-  Internet Access
-  Staging Area
-  Water Source
-  Other
-  Division Break
-  Interstate Highway
-  US Highway
-  State Highway
-  County Road
-  Major Road
-  Minor Road
-  Contained Line
-  Completed Dozer Line
- R · R** Road as Completed Line
-  Access or Improved Road
-  Wildfire Daily Fire Perimeter



Miles  
0 0.15 0.3 0.6



# IAP Map

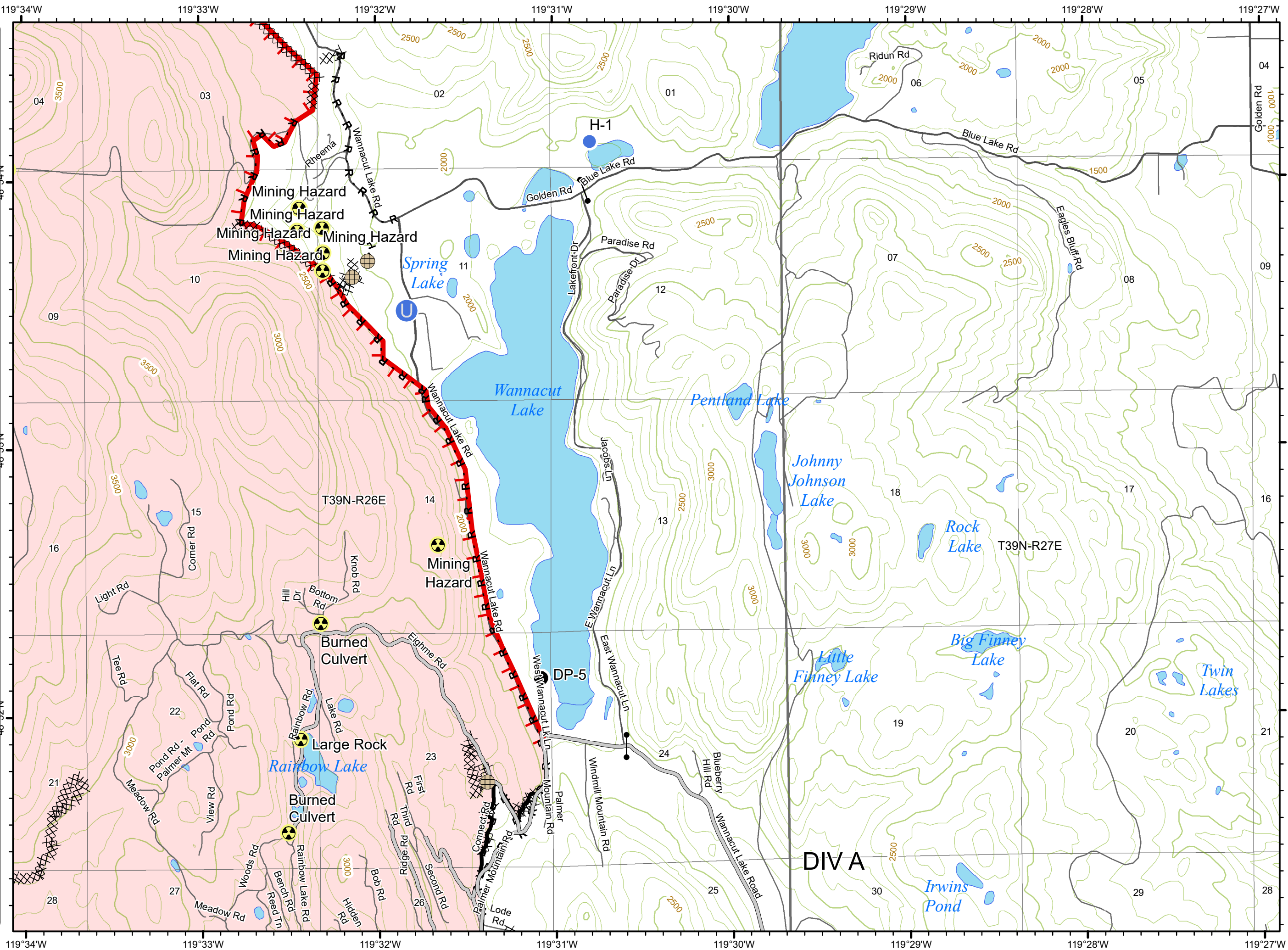
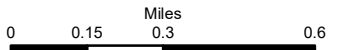
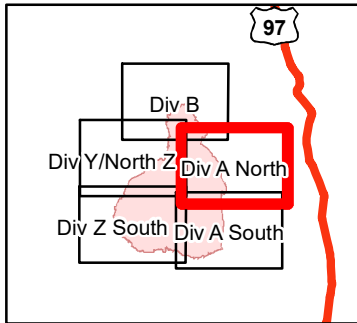
## Palmer Fire

### SPD-1947

8/27/2020

Appx 17,735 ac at  
8/24/2020 2100

-  Fence - Cut/Damaged
-  Gate
-  Hazard
-  Helispot
-  Internet Access
-  Staging Area
-  Water Source
-  Other
-  Division Break
-  Interstate Highway
-  US Highway
-  State Highway
-  County Road
-  Major Road
-  Minor Road
-  Contained Line
-  Completed Dozer Line
-  R · R Road as Completed Line
-  Access or Improved Road
-  Wildfire Daily Fire Perimeter



119°34'W 119°33'W 119°32'W 119°31'W 119°30'W 119°29'W 119°28'W 119°27'W

48°54'N 48°53'N 48°52'N

# IAP Map

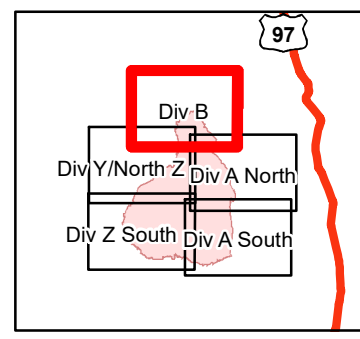
## Palmer Fire



### SPD-1947



8/27/2020

Appx 17,735 ac at  
8/24/2020 2100

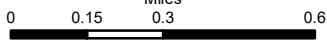
-  Fence - Cut/Damaged
-  Gate
-  Hazard
-  Helispot
-  Internet Access
-  Staging Area
-  Water Source
-  Other
-  Division Break
-  Interstate Highway
-  US Highway
-  State Highway
-  County Road
-  Major Road
-  Minor Road
-  Contained Line
-  Completed Dozer Line
-  R · R Road as Completed Line
-  Access or Improved Road
-  Wildfire Daily Fire Perimeter

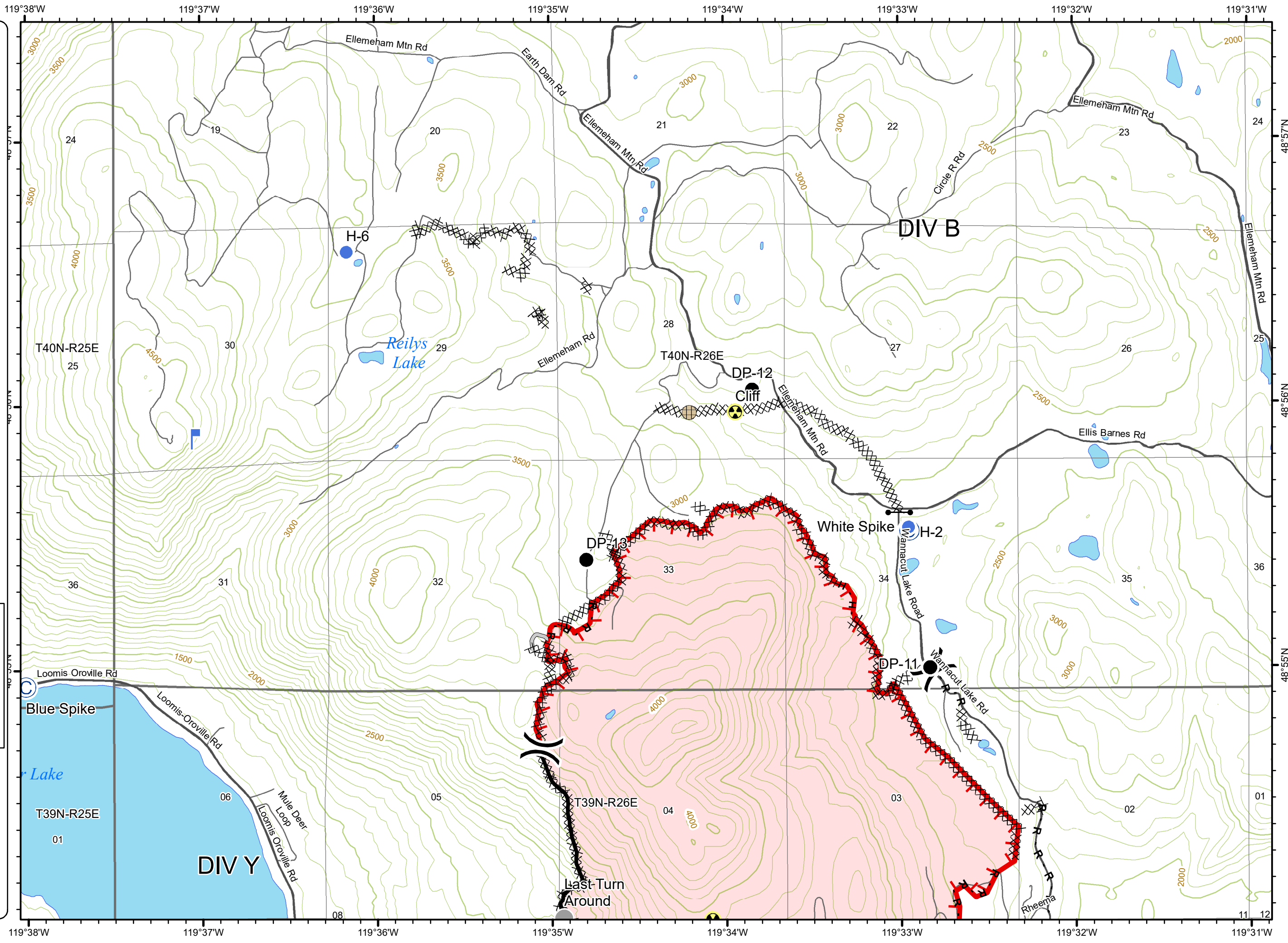


Miles





# IAP Map

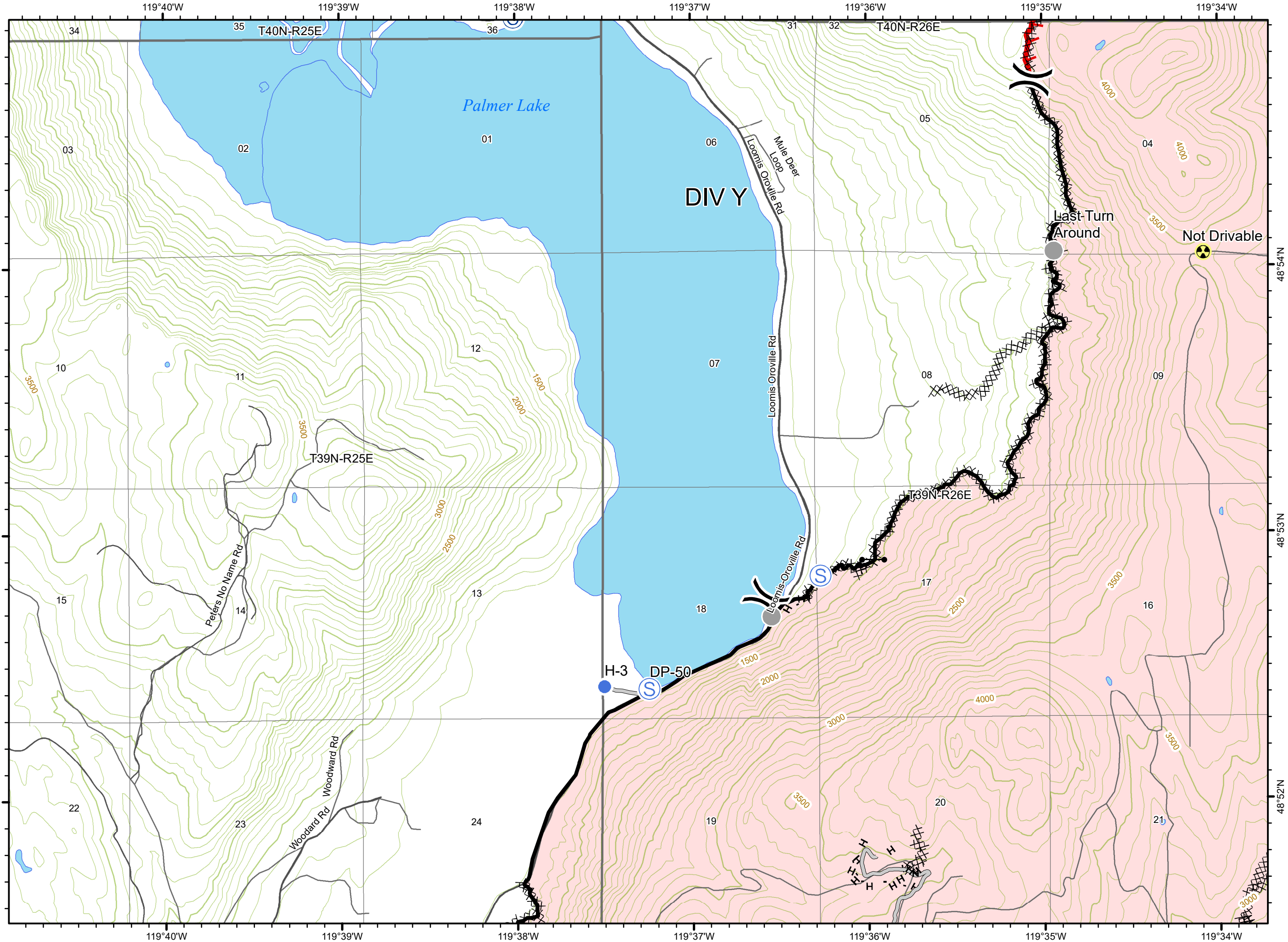
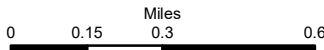
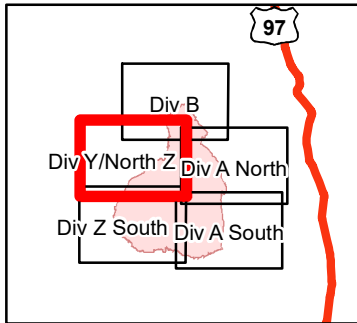
## Palmer Fire

### SPD-1947

8/27/2020

Appx 17,735 ac at  
8/24/2020 2100

-  Fence - Cut/Damaged
-  Gate
-  Hazard
-  Helispot
-  Internet Access
-  Staging Area
-  Water Source
-  Other
-  Division Break
-  Interstate Highway
-  US Highway
-  State Highway
-  County Road
-  Major Road
-  Minor Road
-  Contained Line
-  Completed Dozer Line
- R · R** Road as Completed Line
-  Access or Improved Road
-  Wildfire Daily Fire Perimeter



# IAP Map

## Palmer Fire

### SPD-1947

8/27/2020

Appx 17,735 ac at  
8/24/2020 2100

-  Fence - Cut/Damaged
-  Gate
-  Hazard
-  Helispot
-  Internet Access
-  Staging Area
-  Water Source
-  Other
-  Division Break
-  Interstate Highway
-  US Highway
-  State Highway
-  County Road
-  Major Road
-  Minor Road
-  Contained Line
-  Completed Dozer Line
-  R · R Road as Completed Line
-  Access or Improved Road
-  Wildfire Daily Fire Perimeter

