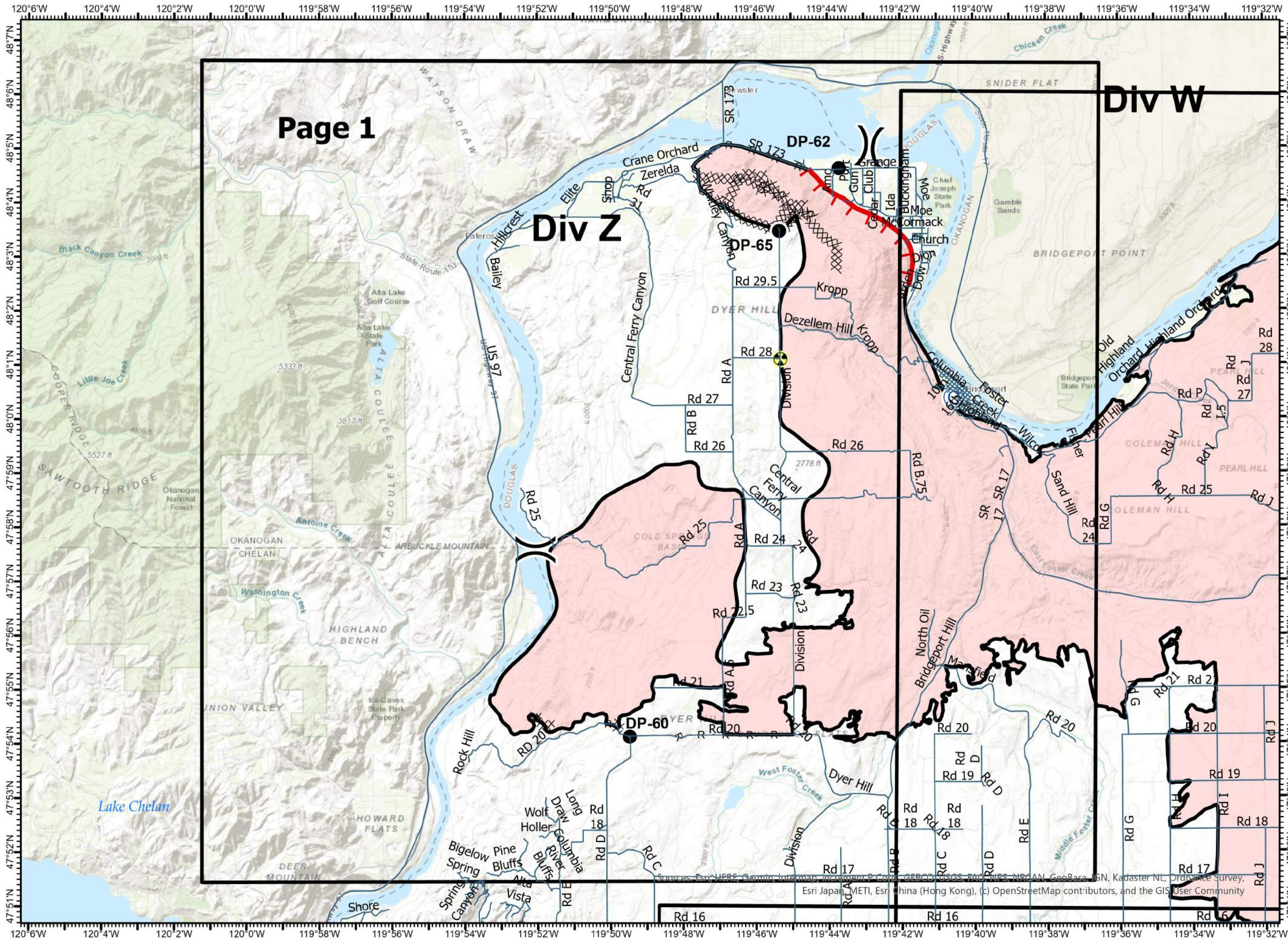


IAP Map
Pearl Hill Fire
WA-WFS-594
 9/14/2020

Appx 223,730 ac at
 9/12/2020 1700

-  Uncontrolled Fire Edge
-  Contained Line
-  Completed Dozer Line
-  Completed Hand Line
-  Road as Completed Line
-  Temporary Flight Restriction
-  Wildfire Daily Fire Perimeter
-  Drop Point
-  Division Break



Source: Esri, HERE, DeLorme, Intermap, increment P Corp., GEBCO, USGS, FAO, NPS, NRCAN, GeoBase, IGN, Kadaster NL, Ordnance Survey, Esri Japan, METI, Esri China (Hong Kong), (c) OpenStreetMap contributors, and the GIS User Community

IAP Map

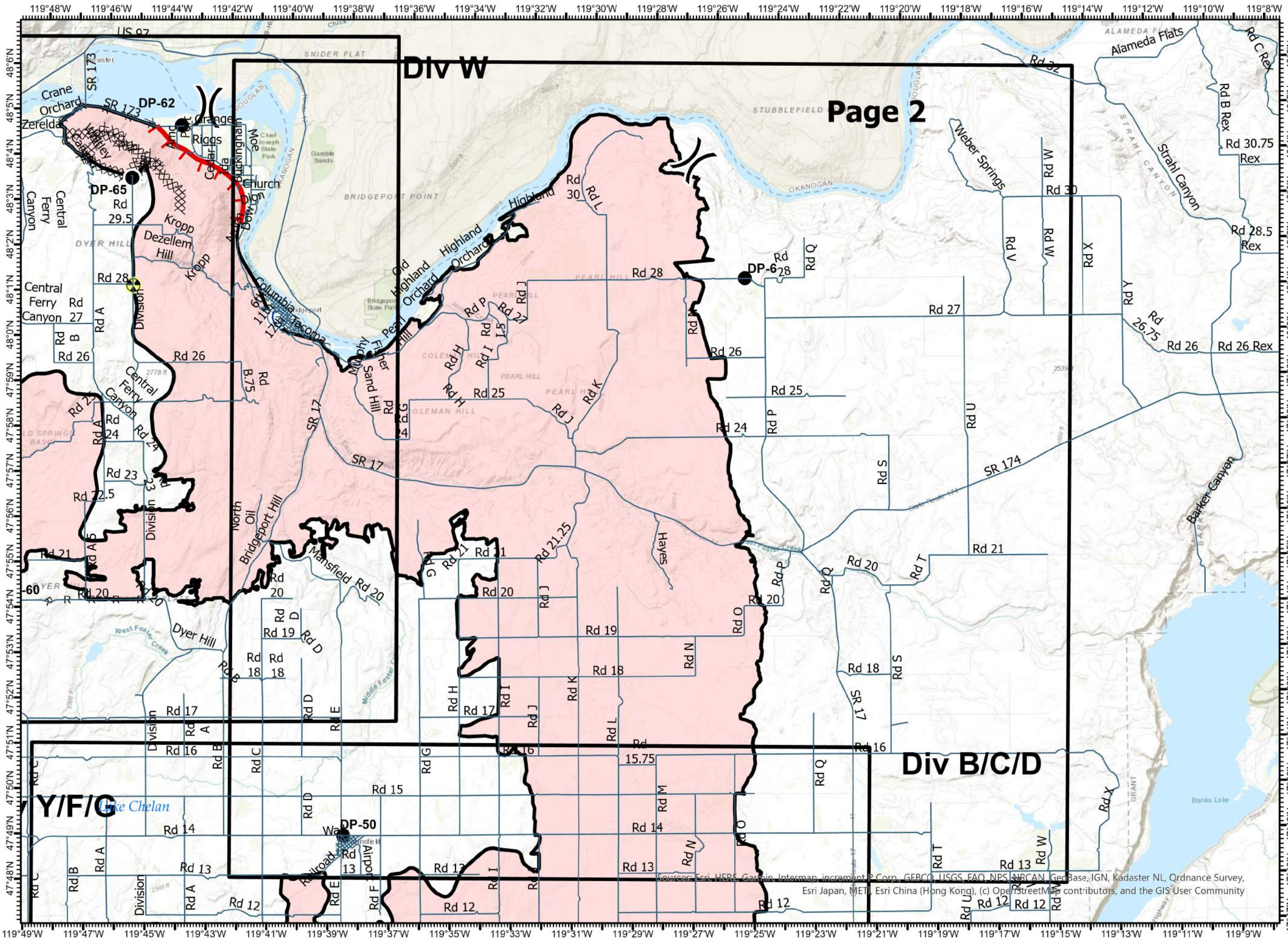
Pearl Hill Fire

WA-WFS-594

9/14/2020

Appx 223,730 ac at
9/12/2020 1700

- Uncontrolled Fire Edge
- Contained Line
- Completed Dozer Line
- Completed Hand Line
- Road as Completed Line
- Temporary Flight Restriction
- Wildfire Daily Fire Perimeter
- Drop Point
- Division Break



Page 2

Div W

Div B/C/D

Div Y/F/G

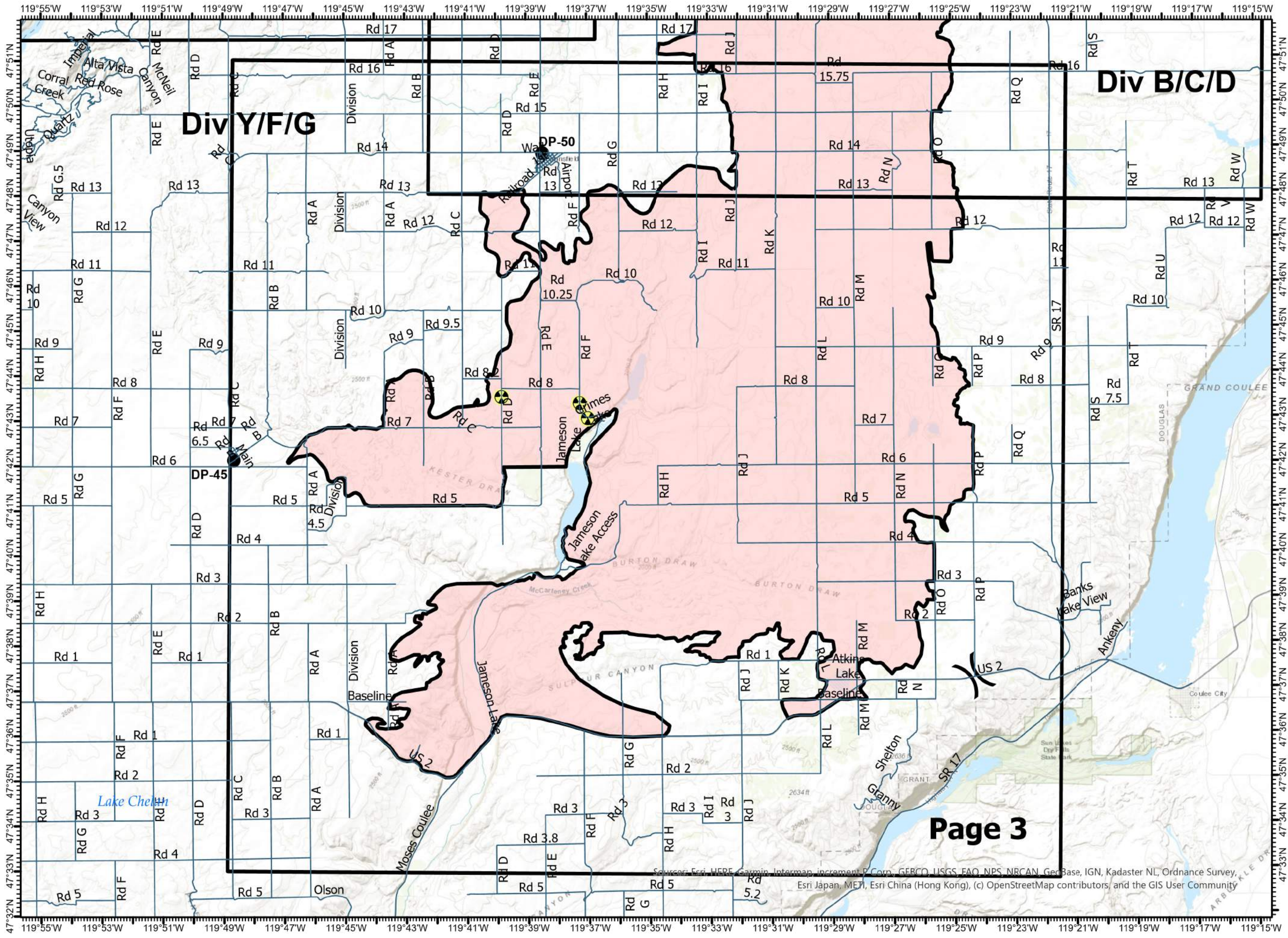
Sources: Esri, HERE, Garmin, Intermap, increment P Corp., GEBCO, USGS, FAO, NPS, NRCAN, GeBCo, IGN, Kadaster NL, Ordnance Survey, Esri Japan, METI, Esri China (Hong Kong), (c) OpenStreetMap contributors, and the GIS User Community

IAP Map

Pearl Hill Fire
WA-WFS-594
9/14/2020

Appx 223,730 ac at
9/12/2020 1700

- Uncontrolled Fire Edge
- Contained Line
- Completed Dozer Line
- Completed Hand Line
- Road as Completed Line
- Temporary Flight Restriction
- Wildfire Daily Fire Perimeter
- Drop Point
- Division Break



Page 3

Sources: Esri, HERE, Garmin, Intermap, increment P Corp., GEBCO, USGS, FAO, NPS, MRCAN, GeoBase, IGN, Kadaster NL, Ordnance Survey, Esri Japan, MEP, Esri China (Hong Kong), (c) OpenStreetMap contributors, and the GIS User Community