

# SEWA Team 3



## Incident Action Plan

---

---

Road 11

WA-WFS-101

Operation Period: 0600 - 1800

July 13, 2020



Original

<b>Incident Objectives</b>	<b>1. Incident Name</b> <b>Road 11</b>	<b>2. Date Prepared</b> <b>7/12/2020</b>	<b>3. Time Prepared</b> <b>14:45</b>
<b>4. Operational Period (Date and Time)</b> <b>7/13/2020                      0600 - 1800</b>			
<b>5. General Control Objectives for the Incident (include Alternatives)</b>			
<ul style="list-style-type: none"> <li>• Provide for firefighter and public safety at all times. This includes the application of the "10 and 18", LCES, and the Risk Management Process.</li> <li>• Fight fire aggressively to limit acreage burned while providing for firefighter and public safety.</li> <li>• Maximize opportunity for cost saving without jeopardizing public or firefighter safety.</li> <li>• Maintain best management practices to limit the spread and exposure of the COVID-19 virus within the crew, on the line, in camp, and to the surrounding community.</li> <li>• Act professionally and in a manner that fosters good relationships with the public, private landowners, timber industry representatives, elected officials and other stakeholders.</li> <li>• Follow agency policies at all times and respect the policies of the host agency.</li> </ul>			
<b>6. Weather Forecast for Operational Period</b>			
See attached weather forecast.			
<b>7. General Safety Message</b>			
<ul style="list-style-type: none"> <li>• Provide for firefighter and public safety at all times.</li> <li>• Monitor compliance of 10 and 18 by all incident personnel.</li> <li>• Adhere to 2:1 work/rest ratio for all fire line personnel.</li> <li>• Aviation safety is high priority. Assess the risk against the benefit of the mission.</li> <li>• Ensure all assigned personnel understand emergency medical reporting &amp; transport procedures including locations of nearest emergency responders &amp; facilities.</li> </ul>			
<b>8. Attachments (check if attached)</b>			
<input checked="" type="checkbox"/> Organization List (ICS 203) <input checked="" type="checkbox"/> Assignment List (ICS 204) <input type="checkbox"/> Air Operations (ICS 220) <input checked="" type="checkbox"/> Weather <input checked="" type="checkbox"/> Communication Plan (ICS 205) <input checked="" type="checkbox"/> HR Message <input checked="" type="checkbox"/> Safety Message <input checked="" type="checkbox"/> Medical Plan (ICS 206) <input checked="" type="checkbox"/> Incident Maps			
<b>ICS-202</b>	<b>9. Prepared by (PSC)</b>  <b>David Winter</b>	<b>10. Approved by (IC)</b>	

<b>ORGANIZATION ASSIGNMENT LIST</b>					
<b>1. Incident Name</b>		<b>Road 11</b>		<b>9. OPERATIONS SECTION</b>	
<b>2. Date</b>	7/12/2020	<b>3. Time</b>	16:45	Chief	Rich Elliott 509.201.6280
<b>4. Operational Period</b>		7/13/2020	0600-1800	Deputy	
<b>5. INCIDENT COMMANDER &amp; STAFF</b>				<b>a. Division A</b>	
Incident Commander	Bob Gear 509.528.1650		Division Supervisor	Anthony Browning 541.980.7415	
Deputy			Deputy		
Safety Officer	Ryan Cloud 509.528.6169		Division/Group		
Information Officer	Dana Leavitt 360.688.6480		Division/Group		
	Ben Shearer 509.492.1461		<b>b. Division B</b>		
			Division Supervisor	Brandon Burton 509.760.0101	
			Deputy		
<b>6. AGENCY REPRESENTATIVE</b>				Division/Group	
Agency	Name		Division/Group		
WA State FM	Esther Hernandez 360.239.3687		<b>c. Division M</b>		
			Division Supervisor	Mike Emerick 509.531.7193	
			Deputy		
			Division/Group		
			Division/Group		
			<b>d. Division Z</b>		
<b>7. PLANNING SECTION</b>				Division Supervisor	
Chief	David Winter 509.301.2631				
Deputy	Fred Knowles 509.386.3406				
Resource Unit	Bill Box 509.540.1686				
Plans Trainee	Josh Clark 502.295.8895				
Documentation Unit			<b>e. Night Division</b>		
Demobilization Unit			Division Supervisor	Eric Kiehn 206.650.6869	
Human Resources					
Technical Specialist (Name/Specialty)					
GIS Specialist	Rachael Mickey 509.774.7170				
<b>8. LOGISTICS SECTION</b>				<b>10. FINANCE SECTION</b>	
Chief	Donn Rasmusson 509.969.3526		Chief	Robert Thompson 509.531.4842	
Deputy	Michael Hendricks 509.948.0441		Deputy		
LSC3 (T)	Kevin Sell 509.521.0670		Time Unit	Sue Ranger	
Facilities Unit			Procurement Unit		
Ground Support Unit			Cost Unit		
Communications Unit	Missy Parker		<b>11. CONTACTS / OTHER INFORMATION</b>		
Medical Unit			CWICC 509.884.3473 fax 509.884.3549		
Security Unit			Prepared by (Resource Unit Leader)		
Food Unit			Fred Knowles		



## Fire Weather Forecast

FORECAST NO: 01

NAME OF FIRE: Road 11 (WA-WFS-000314)

PREDICTION FOR: Monday 13 July 2020

SIGNED: \_\_\_\_\_

*Josh Clark*

TIME/DATE ISSUED: Sunday 12 July 2020 @ 1600

Josh Clark, Incident Meteorologist  
Planning Section Chief, Type 3(T)

---

### WEATHER DISCUSSION:

Warm and dry conditions are expected for the next several days as a weak upper ridge moves over the Pacific Northwest. Winds will be much calmer during this period with late afternoon gusts only reaching to about 10-15 mph. Temperatures will hover around 80-85°F while humidities are expected in the 15-25% range. Breezy winds may be possible on Wednesday afternoon (15-20 mph) for a few hours but otherwise expect little change to the forecast each day.

---

### WEATHER FORECAST FOR TODAY:

WEATHER: Sunny and Warm

TEMPERATURES: 77-82°F

HUMIDITY: Minimum 17-22%

20 FT WINDS: NW 5-10 mph in the morning, then WSW 5-10 mph in the afternoon

HAINES INDEX: 4

CHANCE OF RAIN/AMOUNT: 0%

---

### WEATHER FORECAST FOR TONIGHT:

WEATHER: Clear

TEMPERATURES: 50-55°F

HUMIDITY: Maximum 50-55%

20 FT WINDS: WNW 7-12 mph

HAINES INDEX: 3

CHANCE OF RAIN/AMOUNT: 0%

---

### OUTLOOK FOR TUESDAY:

Mostly sunny and warm. Highs around 80-84°F with RHs around 15-20%. NW winds 5-10 mph in the morning, then WSW winds 7-12 mph in the afternoon and evening. Haines Index: 3. Chance of rain: 0%.

---

### EXTENDED FORECAST (WEDNESDAY AND THURSDAY):

Sunny and warm conditions continue. Breezy winds may be possible Wednesday afternoon/evening. Highs 83-87°F. RHs 22-27%. Winds mostly out of the west-northwest and gusting to 15-20 mph at times. Haines 3.

---

## Fire Behavior Forecast

---

### DISCUSSION:

Fire behavior is expected to moderate as the winds will not be nearly as fast as Sunday. The forecasted burning index value for the Upper Basin FDRA is 22 (64<sup>th</sup> percentile) and the forecasted energy release component value is 44 (77<sup>th</sup> percentile). Winds are likely to continue to be light through Wednesday morning and then possibly breezy during the afternoon. This could result in flare-ups and wind-driven runs especially on the eastern flank of the fire.

## Division/Group Assignment List (ICS 204 WF)

Controlled Unclassified Information//Basic

<b>1. Incident Name:</b>		<b>3.</b>				
ROAD 11		<b>Branch:</b>		<b>Division/Group:</b>  <b>A</b>		
<b>2. Operational Period:</b> DAY						
Date/Time From: 07/13/2020 0600 MON	Date/Time To: 07/13/2020 1800 MON					
<b>4. Operations Personnel</b>						
<b>OPERATIONS CHIEF</b> ELLIOTT, RICH		<b>SAFETY OFFICER</b> RYAN CLOUD				
<b>DIVISION/GROUP SUPERVISOR</b> BROWNING, ANTHONY						
<b>5. Resources Assigned this Period</b>						
Strike Team / Task Force / Resource Designator	LWD	Leader	Number Persons	Drop Off PT./Time	Pick Up PT./Time	
C-2001 OWF-CHELAN HC21		VERDUZCO, FIDEL	18			
O-2125 TFLD	07/25	DICKINSON, JEFF	1			
O-2132 STEN (T)	07/25	KOSIBA, RAY	1			
E-2126 SKY VALLEY BR53 ENG3	07/25	WALTERS, ERNIE	3			
E-2127 SKAGIT CO BR 1424 ENG6	07/25	CANTY, WILLIAM	2			
E-2128 SNOHOMISH BR33 ENG6	07/25	MATTERN, CLAY	3			
E-2129 SKY VALLEY BR55 ENG3	07/25	MCCORMICK, STEVE	3			
E-2130 SNOHOMISH 22, BR68 ENG3	07/25	LEE, CHAD	3			
E-2131 SNOHOMISH 15, T60 WTT2	07/25	DINEEN, PATRICK	2			
E-2001 OSPREY WF ENG #06 ENG5	07/25	ROE, KEVIN	3			
O-2141 STEN		BERMAN, JASON	1			
E-2142 SE THURSTON FIRE AUTHORITY ENG6		PIRIE, JAMES	1			
E-2143 SOUTH THURSTON ENG3		SCHAFFRAN, ANDREW	3			
E-2144 LEWIS COUNTY FD5 ENG6		WALLACE, MATTHEW	3			
E-2145 THURSTON 9 ENG3		HODGE, HEATH	2			
E-2146 THURSTON 17 ENG6		CRUZ-DOUGLAS, AMANDA	2			
E-2147 LACEY FD 3 WTS2		PEARSALL, RON	2			
E-1 ENG #1026 ENG4	07/25	SULTON, CODY	3			
<b>6. Control Operations/Work Assignments:</b>						
<b>8. Division/Group Communication Summary</b>						
Function	Channel	RX Frequency N/W	RX Tone/NAC	TX Frequency N/W	TX Tone/NAC	Mode
COMMAND	2	159.2250	156.7	151.4750	156.7	N
TACTICAL	1	151.4150	103.5	151.4150	103.5	N
AIR TO GROUND	14	167.4500		167.4500		N
<b>9. Prepared By (Resource Unit Leader)</b>		<b>Approved By (Planning Section Chief)</b>		<b>Date</b>	<b>Time</b>	
BILL BOX				07/12/2020	0000	

## Division/Group Assignment List (ICS 204 WF)

Controlled Unclassified Information//Basic

<b>1. Incident Name:</b>			<b>3.</b>			
ROAD 11			Branch:		Division/Group:	
<b>2. Operational Period: DAY</b>					A	
Date/Time From: 07/13/2020 0600      MON	Date/Time To: 07/13/2020 1800      MON					
<b>4. Operations Personnel</b>						
OPERATIONS CHIEF		ELLIOTT, RICH		SAFETY OFFICER		
				RYAN CLOUD		
DIVISION/GROUP SUPERVISOR		BROWNING, ANTHONY				
<b>6. Control Operations/Work Assignments:</b>						
Task: Mop up 100ft along perimeter and 300ft around structures.						
Purpose: Secure the line around the perimeter and structures.						
End State: Mop up objectives are met and fire remains in the current footprint.						
<b>7. Special Instructions:</b>						
<b>8. Division/Group Communication Summary</b>						
Function	Channel	RX Frequency N/W	RX Tone/NAC	TX Frequency N/W	TX Tone/NAC	Mode
COMMAND	2	159.2250	156.7	151.4750	156.7	N
TACTICAL	1	151.4150	103.5	151.4150	103.5	N
AIR TO GROUND	14	167.4500		167.4500		N
<b>9. Prepared By (Resource Unit Leader)</b>			<b>Approved By (Planning Section Chief)</b>		<b>Date</b>	<b>Time</b>
BILL BOX					07/12/2020	0000

**Division/Group Assignment List (ICS 204 WF)**  
**Controlled Unclassified Information//Basic**

<b>1. Incident Name:</b>				<b>3.</b>		
ROAD 11				<b>Branch:</b>		<b>Division/Group:</b>
<b>2. Operational Period: DAY</b>				<b>B</b>		
Date/Time From: 07/13/2020 0600 MON		Date/Time To: 07/13/2020 1800 MON				
<b>4. Operations Personnel</b>						
<b>OPERATIONS CHIEF</b>		ELLIOTT, RICH		<b>SAFETY OFFICER</b>		CLOUD, RYAN
<b>DIVISION/GROUP SUPERVISOR</b>		BURTON, BRANDON				
<b>5. Resources Assigned this Period</b>						
<b>Strike Team / Task Force / Resource Designator</b>		<b>LWD</b>	<b>Leader</b>	<b>Number Persons</b>	<b>Drop Off PT./Time</b>	<b>Pick Up PT./Time</b>
BAKER HC1						
O-2133 STEN		07/25	HEIDAL, DALE	1		
O-2140 STEN (T)		07/25	JOHNSON, JOHN	1		
E-2134 EPFR ENG5		07/25	OLEARY, BRIAN	3		
E-2135 GIG HARBOR ENG6		07/25	COCHRANE, ANDY	2		
E-2136 MASON COUNTY ENG6		07/25	VOGEL, JONATHAN	2		
E-2137 NORTH MASON RFA ENG6		07/25	ZUBER, TANNER	2		
E-2138 MASON COUNTY FD6 ENG6		07/25	APONTE, LUIS	2		
E-2139 WEST MASON FIRE WTS2		07/25	MILLER, JEREMIAH	1		
E-2000 ENGINE - T4			SUDER, ROSS			
E-2002 LATE SUMMERS ENG #07 ENG6		07/25	BOVEE, JENSON	2		
E-3 ENG #1030 ENG6		07/25	BURNELLE, BRIAN	3		
O-2101 STEN		07/24	FORTIER, DON	1		
E-2102 GRANT CO FD5 ENG3		07/24	HORST, ROBERT	3		
E-2103 GRANT CO FD5 ENG6		07/24	PARKER, KYLE	2		
E-2105 GRANT CO FD3 ENG6		07/24	AAMOLD, NATHAN	2		
E-2106 GRANT CO FD10 WTT1		07/24	GALARZA, CESAR	2		
E-2107 GRANT CO FD5 WTS2		07/24	BOYD, DUSTIN	1		
<b>6. Control Operations/Work Assignments:</b>						
<b>8. Division/Group Communication Summary</b>						
<b>Function</b>	<b>Channel</b>	<b>RX Frequency N/W</b>	<b>RX Tone/NAC</b>	<b>TX Frequency N/W</b>	<b>TX Tone/NAC</b>	<b>Mode</b>
COMMAND	2	159.2250	156.7	151.4750	156.7	N
TACTICAL	6	151.3850	192.8	151.3850	192.8	N
AIR TO GROUND	14	167.4500		167.4500		N
<b>9. Prepared By (Resource Unit Leader)</b>			<b>Approved By (Planning Section Chief)</b>		<b>Date</b>	<b>Time</b>
BILL BOX					07/12/2020	0000

**Division/Group Assignment List (ICS 204 WF)**  
 Controlled Unclassified Information//Basic

<b>1. Incident Name:</b>			<b>3.</b>			
ROAD 11			Branch:		Division/Group:	
<b>2. Operational Period:</b> DAY					<b>B</b>	
Date/Time From: 07/13/2020 0600 MON						
Date/Time To: 07/13/2020 1800 MON						
<b>4. Operations Personnel</b>						
OPERATIONS CHIEF		ELLIOTT, RICH		SAFETY OFFICER		CLOUD, RYAN
DIVISION/GROUP SUPERVISOR		BURTON, BRANDON				
<b>6. Control Operations/Work Assignments:</b>						
Task: Mop up 100ft along perimeter and 300ft around structures.						
Purpose: Secure the line around the perimeter and structures.						
End State: Mop up objectives are met and fire remains in the current footprint.						
<b>7. Special Instructions:</b>						
<b>8. Division/Group Communication Summary</b>						
Function	Channel	RX Frequency N/W	RX Tone/NAC	TX Frequency N/W	TX Tone/NAC	Mode
COMMAND	2	159.2250	156.7	151.4750	156.7	N
TACTICAL	6	151.3850	192.8	151.3850	192.8	N
AIR TO GROUND	14	167.4500		167.4500		N
<b>9. Prepared By (Resource Unit Leader)</b>			<b>Approved By (Planning Section Chief)</b>		<b>Date</b>	<b>Time</b>
BILL BOX					07/12/2020	0000



**Division/Group Assignment List (ICS 204 WF)**  
Controlled Unclassified Information//Basic

1. Incident Name:			3.			
ROAD 11			Branch:		Division/Group:	
2. Operational Period: DAY			M			
Date/Time From: 07/13/2020 0600 MON	Date/Time To: 07/13/2020 1800 MON					
4. Operations Personnel						
OPERATIONS CHIEF		ELLIOTT, RICH		SAFETY OFFICER		
				CLOUD, RYAN		
DIVISION/GROUP SUPERVISOR		EMERICK, MIKE				
5. Resources Assigned this Period						
Strike Team / Task Force / Resource Designator	LWD	Leader	Number Persons	Drop Off PT./Time	Pick Up PT./Time	
O-2117 STEN	07/25	WILKINS, JAY	1			
O-2124 STEN (T)	07/25	TORNO, KEN	1			
E-2118 ENG #B09 ENG5	07/25	BIRKY, RHYS	4			
E-2119 ENG #B1506 ENG5	07/25	BEER, ZACH	3			
E-2120 ENG #B1326 ENG6	07/25	BREWER, JAMES	2			
E-2121 ENG #LI113 ENG3	07/25	STOOPS, KEN	3			
E-2122 ENG #VB10 ENG5	07/25	HEATH, SHAWN	2			
E-2123 TENDER #T2 WTS2	07/25	BACH, AUSTIN	1			
E-2 ENG #1027 ENG5	07/25	THOMAS, TARYN	3			
O-2109 STEN	07/25	BENITZ, BONNIE	1			
E-2110 CCFD3 ENG6	07/25	PARVINEN, DEVIN	2			
E-2111 WWFD4 ENG6	07/25	PONTAROLO, PARKER	2			
E-2112 PASCO FD ENG6	07/25	BERGSHIM, CODY	2			
E-2113 WALLA WALLA FD ENG5	07/25	ONGERS, SHAWN	2			
E-2114 BCFD1 ENG3	07/25	SALLER, KYLE	2			
E-2115 BCFD4 WTS2	07/25	GREEN, REX	1			
E-2014 BATCHELOR EXCVATION DOZ2						
6. Control Operations/Work Assignments:						
Task: Mop up 100ft along perimeter and 300ft around structures.						
Purpose: Secure the line around the perimeter and structures.						
End State: Mop up objectives are met and fire remains in the current footprint.						
8. Division/Group Communication Summary						
Function	Channel	RX Frequency N/W	RX Tone/NAC	TX Frequency N/W	TX Tone/NAC	Mode
COMMAND	2	159.2250	156.7	151.4750	156.7	N
TACTICAL	10	154.3400	107.2	154.3400	107.2	N
AIR TO GROUND	14	167.4500		167.4500		N
9. Prepared By (Resource Unit Leader)			Approved By (Planning Section Chief)		Date	Time
BILL BOX					07/12/2020	0000

INCIDENT RADIO COMMUNICATIONS PLAN		1. Incident Name		2. Date/ Time Prepared		3. Operational Period Date/Time	
		WEN - DOUG CO Type 3 (ZONE 7)		7/12/2020 1030		ALL SHIFTS	
4. Basic Radio Channel Utilization							
Chan	Function	Frequency		Tone	Mode	Name	Remarks
		RX:	TX:				
1	TACTICAL	RX:	151.4150	103.5	N	DNR COM	Alpha/Zulu
		TX:	151.4150	103.5			
2	COMMAND	RX:	159.2250	156.7	N	CHELAN	DNR REPEATER
		TX:	151.4750	156.7			
3		RX:					
4		RX:					
5		RX:					
6	TACTICAL	RX:	151.3850	192.8	N	TAC 6	Bravo & Night
		TX:	151.3850	192.8			
7		RX:					
8	REPEATER	RX:	155.6850	107.2	N	CO FIRE 2	RIVERCOM - CHELAN CO FIRE
		TX:	153.9500	D051			
9	TACTICAL	RX:	153.8300		N	WA REDNT	
		TX:	153.8300				
10	TACTICAL	RX:	154.3400	107.2	N	BLACK	Mike
		TX:	154.3400	107.2			
11	REPEATER	RX:	159.0675	110.9	N	TAC GOAT	
		TX:	153.8000	100.0			
12		RX:					
13		RX:					
14	TACTICAL	RX:	167.4500		N	A/G 40	WA 03 PRIMARY A/G
		TX:	167.4500				
15	TACTICAL	RX:	159.2700	103.5	N	DNR A/G 1	DNR AIR TO GROUND PRIMARY
		TX:	159.2700	103.5			
16		RX:					
TX:							

5. Prepared by (Communications Unit)

MISSY PARKER, STS/COML DNR SE REGION

## HEALTH AND SAFETY MESSAGE

**SAFETY** starts with **YOU**

We are **ALL** accountable for **SAFE** behaviors

INCIDENT: Road 11 WA-WFS-101

DATE: July 12-13, 2020

TIME: Day and Night

**Major Hazards and Risks: Uneven terrain, driving, insects.**

### Fire Order of the Day – Retain control at all times

**Narrative: Maintain situational awareness and avoid compliancy as we move forward towards transition. Keep informed of the weather and maintain multiple escape routes.**

**A good season is when everyone is around for Christmas dinner!**

**If you don't learn something from each fire you go on, it's time to find another job!**

**The amount of O/T you got has nothing to do, with how good you do your job!**

**Driving – Let's use our best skilled, experience, trained and knowledgeable DRIVERS. Lots of blind curves, narrow roads. Stay alert. Wear your seatbelt, use your headlights, and Drive Defensively.**

**Insects: Bees, wasps, hornets and spiders are all here! ( Incident within an Incident protocols)**

**Those who cannot remember the past (or learn from it) are condemned to repeat it.” *George Santayana 1905***

### **Watch Out Situation of the Day**



18.TAKING A NAP NEAR THE FIRELINE

ISSUE: Driving

DESCRIPTION: Driving will be a critical responsibility for every incident. We will need to focus on the specific hazards with each assignment.

RISK: Statistically, driving has been one of the leading causes for serious injuries and death. The variety of road conditions, vehicles and the hazardous conditions makes driving an important issue to mitigate.

Our LCES, will be to assure that every driver/operator receives a copy of our of team's policy on driving. (See attachment)

# Fire and COVID-19 Briefing Checklist

## Self-Awareness / Screening

- Immediately separate yourself from others.
- Notify supervisor if you or others experience:
  - Cough, more than expected
  - Shortness of breath or difficulty breathing
  - New loss of taste or smell
  - Fever                       Chills
  - Sore throat                 Muscle pain
- Review and follow crew and division plans to isolate, triage, and transport symptomatic personnel.

## Hygiene on the Fireline

- Properly wash or sanitize your hands often, especially before and after eating or entering a public place, and after coughing or sneezing.
- Avoid handshakes and communal use items.
- Maintain a supply of hand sanitizer and hand wipes. Inform supervisor of needed resupply.
- Disinfect high touch surfaces often:
  - Radios, phones, doors, pumps, fuel cans, etc.

## Social Distancing and Protective Equipment

- Initiate, practice, and remind others of social distancing.
- Conduct briefings and conversations outdoors and at least 6 feet apart.
- Utilize face coverings as a tool when practical.
- Clean or replace dirty face coverings, equipment, and PPE.

## Communications

- Face coverings and social distancing complicate communications. Ensure effective sender/receiver messaging.

## Protect yourself, your crew, and your camp!

Find more information: <https://www.nwccg.gov/coronavirus>.

# Camp Map



**\* Lunch, dinner, ice, water, dumpsters.**

**# Potable Water for Cubies**

# STATE MOBE RESOURCES Crew Time Reports

CREW TIME REPORT						
(1) CREW NAME <i>Central Region Strike Team # 2</i>				(2) CREW NUMBER <i>2105</i>		
(3) OFFICER RESPONSIBLE FOR TIME <i>State Mobe</i>			(4) FIRE NAME <i>Canyon Creek</i>		(5) FIRE NUMBER <i>WA-WFS-805</i>	
RE-MARKS NO	NAME OF EMPLOYEE	CLASSIFICATION	DATE <i>7/16/17</i>		DATE	
			Military Time		Military Time	
			ON	OFF	ON	OFF
<i>B</i>	<i>Steve Jones</i>	<i>ENCB</i>	<i>0600</i>	<i>0630</i>		
<i>RP</i>	<i>Robert Smith</i>	<i>FF2</i>	↓	↓		
	<i>Jon Blackwell</i>	<i>FF2</i>	↓	↓		
<i>1</i>	<i>Steve Jones</i>	<i>ENCB</i>	<i>0630</i>	<i>2000</i>		
	<i>Robert Smith</i>	<i>FF2</i>	↓	↓		
	<i>Jon Blackwell</i>	<i>FF2</i>	↓	↓		
(11) REMARKS						
<i>B Briefing / RP Rtg Prep</i>						
<i>1) Assigned to Division B - Structure Protection</i>						
<i>1/2 Hr Compensable Lunch</i>						
(12) OFFICER-IN-CHARGE (Signature)				(13) TITLE (Officer-in-Charge)		
(14) NAME (Person Posting to Emergency Time Report)					(15) DATE	

261-101

STANDARD FORM 261 (5/78)  
Prescribed by USDA-USDI (NWCg Handbook No. 2)

**Please Note:**

Camp set up is not eligible for reimbursement and should not be recorded on the CTR.

*Line personnel only* - Lunch breaks are considered on-duty time and should be recorded in the Remarks Section as "1/2 Hr Compensable Lunch".

Excessive muster and travel time will be deducted from your recorded hours unless a reasonable justification is provided to and approved by the assigned Mobilization Representative.

Time required for vehicle/equipment servicing or maintenance is not compensable.

If the apparatus is out of service and the crew is reassigned to other units, it must be documented on the CTR. If it is not documented, the hours for those personnel will not be compensable.

# STATE MOBE RESOURCES

## Emergency Equipment Shift Ticket

EMERGENCY EQUIPMENT SHIFT TICKET				Resource Order # <b>2105</b>	
<small>NOTE: The responsible Government Officer will update this form each day or shift and make initial and final equipment inspections.</small>					
1. AGREEMENT NUMBER			2. CONTRACTOR (name) <b>Tharston # 25</b>		
3. INCIDENT OR PROJECT NAME <b>Cargax Creek</b>		4. INCIDENT NUMBER <b>WA-WFS-805</b>		5. OPERATOR (name) <b>Steve Jones</b>	
6. EQUIPMENT MAKE <b>Ford</b>		7. EQUIPMENT MODEL <b>F450</b>		8. OPERATOR FURNISHED BY <input checked="" type="checkbox"/> CONTRACTOR <input type="checkbox"/> GOVERNMENT	
9. SERIAL NUMBER <b>B-251</b>		10. LICENSE NUMBER <b>34545C</b>		11. OPERATING SUPPLIES FURNISHED BY <input checked="" type="checkbox"/> CONTRACTOR (wet) <input type="checkbox"/> GOVERNMENT (dry)	
12. DATE MO/DAY/YR <b>7/2/14</b>	START <b>06:30</b>	STOP <b>20:00</b>	13. EQUIPMENT USE HOURS/DAYS/MILES (circle one) WORK <b>13.5</b> SPECIAL <b>Dir B</b>		
14. REMARKS (released, down time and cause, problems, etc.) <b>Type 6 Engine</b>					
15. EQUIPMENT STATUS <input type="checkbox"/> a. Inspected and under agreement <input type="checkbox"/> b. Released by Government <input type="checkbox"/> c. Withdrawn by Contractor					
18. INVOICE POSTED BY (Recorder's Initials)					
17. CONTRACTOR'S OR AUTHORIZED AGENT'S SIGNATURE <b>Steve Jones</b>			18. GOVERNMENT OFFICER'S SIGNATURE		19. DATE SIGNED

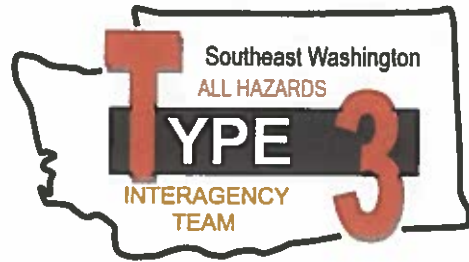
FINANCE

NSN 7540-01-119-8628  
50207-102

OPTIONAL FORM 297 (Rev. 7-00)  
USDA/USDI

Indicate type of engine or tender.  
 On the initial travel day, keep track of both the hours worked and miles driven. (Travel time is calculated as miles from home unit to incident divided by 45 mph.)  
 DO NOT include muster, check-in, briefing, demobe or rehab time on the equipment.

# Code of Conduct Incident Personnel



Each individual on this incident is responsible for:

- ☒ Being *ready and able* to perform their assigned duties effectively.
- ☒ Conducting themselves in a manner that treats people with dignity, equality, courtesy, and respect.
- ☒ Abiding by agency ethics and conduct regulations.
- ☒ Reporting any harassment or other inappropriate behavior.

Each individual of this incident has the right to:

- ☒ Work in an environment characterized by safe work practices.
- ☒ Work in a fair and harassment free environment.
- ☒ Say "No" to unwelcome advances or requests for favors.
- ☒ File complaints or grievances through appropriate avenues.

There is zero tolerance for inappropriate behavior while assigned to the incident, including:

- ☒ Illegal drug use
- ☒ Alcohol use
- ☒ Unsafe work practices and activities
- ☒ Discrimination
- ☒ Sexual harassment
- ☒ Fighting, threatening, and abusive behaviors
- ☒ Using social media and electronic communication devices for personal business while engaged in fire assignment duties.
- ☒ Other violations of Fire Service, Washington DNR, and Federal agency standards of conduct.

Failure to adhere to the Code of Conduct could result in dismissal from the incident, with notification to your home unit.

The public expects our best efforts; they see us as professionals in what we say and do. Let's continue to show them we are!





## Road 11 Fire

July 12, 2020 PM  
Fire Information Number – 509 761 4958

<b><u>PIO Dana Leavitt</u></b>	<b><u>INFORMATION LINE</u></b>
Phone: 360-688-6480 Email: SEWAIMTPIO@gmail.com	<b><u>509-761-4958</u></b>
Facebook: Southeast Washington Interagency Incident Management Team	<b><u>FACEBOOK</u></b> <b><u>@sewaimt</u></b>

**We are requesting pictures of fire line activity.  
Please identify people and agencies so they can get credit.**

**Before posting pictures to your own accounts:**

When your taking pictures please make sure that the following things are in place:

If you are near the fire line, ALL PPE must be worn. Gloves, hats, etc.

Make sure the activity you are capturing is what you want the public to see! You might want the picture of your crew eating lunch. Think twice before you post it on your account.

Please do not take pictures of people laying around the fire line. Beware of how the picture looks. Sometimes distances can be deceiving. You might be at a safe distance, but if it looks like the plane is dropping water right behind you, that is what the public will think.

Remember your COVID Face cover if you are not social distanced.

Please email pictures or you can text to my number 360. 688. 6480

Refer the public to the PIO information line, and the SEWAIMT Facebook.

I will try to give divisions a call if media wants to come out. If Media shows up unescorted please ask them to call me, and please report it up the chain of command.

# Road 11 Fire WA-WFS-314 IAP Map

07/13/2020 Day Shift  
Perimeter as of: 07/12/2020 @ 1200  
Approx: 9,648 ac



Division Break



Spot Fire



Highway



Primary Road



Light-Duty Road



Unimproved Road



Railroad



BPA Transmission Lines



Utility Line



FIRE BOUNDARY



SE WASHINGTON

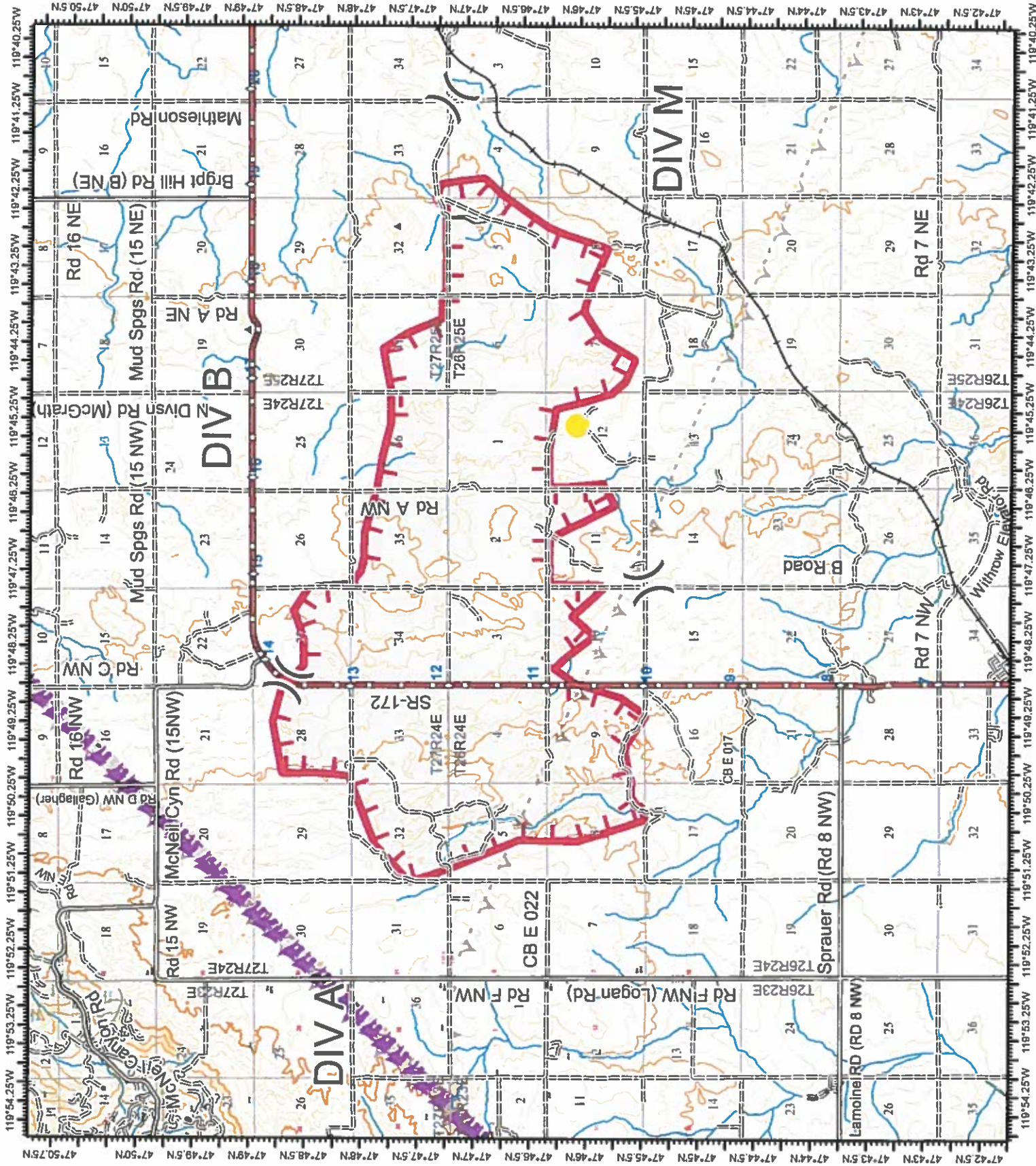
ALL HAZARDS



INTER-AGENCY TEAM



Datum: North American 1983 HARN



<b>Medical Plan</b> (ICS 206)	<b>1. Incident Name</b> Road 11 WA-WFS-101	<b>2. Operational Period:</b>	Date From/To: 7-12 Night Time From/To: 7-13 Day			
<b>3. Medical Aid Stations:</b>						
<b>Name</b>	<b>Location</b>	<b>Contact Number(s)/Frequency</b>	<b>Paramedics on Site?</b>			
Ballard	Staged Touhey Rd and 9.5 NE	DNR Chelan	<input checked="" type="checkbox"/> Yes <input type="checkbox"/> No			
Douglas Co FD 5	ICP	DNR Chelan	<input type="checkbox"/> Yes <input checked="" type="checkbox"/> No			
			<input type="checkbox"/> Yes <input type="checkbox"/> No			
<b>4. Transportation (indicate air or ground):</b>						
<b>Name</b>	<b>Location</b>	<b>Contact Number(s)/Frequency</b>	<b>Level of Service</b>			
Ballard Ambulance	1028 N Wenatchee, Wenatchee, WA	911/509.663.6513	<input checked="" type="checkbox"/> ALS <input type="checkbox"/> BLS			
Lifeline Ambulance - Station1	501 N Wenatchee, Wenatchee, WA	911/509.663.8091	<input checked="" type="checkbox"/> ALS <input type="checkbox"/> BLS			
Lifeline Ambulance - Station2	230 Grant Rd, East Wenatchee, WA	911/509.663.8091	<input checked="" type="checkbox"/> ALS <input type="checkbox"/> BLS			
Airlift Northwest (Air)	Seattle, WA	800.426.2430	<input checked="" type="checkbox"/> ALS <input type="checkbox"/> BLS			
LifeFlight	Several locations in Eastern WA	800.422.2440	<input checked="" type="checkbox"/> ALS <input type="checkbox"/> BLS			
Douglas FD #5	Mansfield	911/ DNR Chelan	<input type="checkbox"/> ALS <input checked="" type="checkbox"/> BLS			
<b>5. Hospitals:</b>						
<b>Hospital Name</b>	<b>Address Latitude/Longitude</b>	<b>Contact Number(s)/Frequency</b>	<b>Travel Time Air Ground</b>	<b>Trauma Center</b>	<b>Burn Center</b>	<b>Helipad</b>
Harborview Medical Cntr	325 9th Ave, Seattle, WA N47 36.1 W121 19.3	206.744.3000		<input checked="" type="checkbox"/> Yes Level: 1	<input checked="" type="checkbox"/> Yes <input type="checkbox"/> No	<input checked="" type="checkbox"/> Yes <input type="checkbox"/> No
Confluence Health Hospital	1201 S Miller St, Wenatchee, WA N47 24.42 W120 19.26	509.662.1511		<input checked="" type="checkbox"/> Yes Level: 2,3	<input type="checkbox"/> Yes <input checked="" type="checkbox"/> No	<input checked="" type="checkbox"/> Yes <input type="checkbox"/> No
Confluence Health Center	820 N Chelan Ave, Wenatchee, WA	509.663.8711		<input type="checkbox"/> Yes Level: ___	<input type="checkbox"/> Yes <input checked="" type="checkbox"/> No	<input type="checkbox"/> Yes <input checked="" type="checkbox"/> No
Lake Chelan Comm Hosp	503 E Highland Ave, Chelan, WA	509.682.3300		<input checked="" type="checkbox"/> Yes Level: 4	<input type="checkbox"/> Yes <input checked="" type="checkbox"/> No	<input type="checkbox"/> Yes <input checked="" type="checkbox"/> No
				<input type="checkbox"/> Yes Level: ___	<input type="checkbox"/> Yes <input type="checkbox"/> No	<input type="checkbox"/> Yes <input type="checkbox"/> No
				<input type="checkbox"/> Yes Level: ___	<input type="checkbox"/> Yes <input type="checkbox"/> No	<input type="checkbox"/> Yes <input type="checkbox"/> No
<b>6. Special Medical Emergency Procedures:</b>						
<p>Identify crew EMTs on the line for each Division prior to engaging. In case of urgent situation, 2014 IRPG. Notify operations of needs and location on command channel. Operations will notify CWICC and base camp. Minimize radio traffic and maintain situational awareness.</p> <p><input type="checkbox"/> Check box if aviation assets are utilized for rescue. If assets are used, coordinate with Air Operations.</p>						
<b>7. Prepared by (Medical Unit Leader):</b>		Name: R. Cloud		Signature:		
<b>8. Approved by (Safety Officer):</b>		Name: R. Cloud		Signature:		

**This page is intentionally left blank.**



**This page is intentionally left blank.**



# MEDICAL PLAN (ICS 206 WF)

Medical Incident Report					
<b>FOR ALL MEDICAL EMERGENCIES: IDENTIFY ON SCENE INCIDENT COMMANDER BY NAME AND POSITION AND ANNOUNCE "MEDICAL EMERGENCY" TO INITIATE RESPONSE FROM IMT COMMUNICATIONS/DISPATCH.</b>					
<b>Use items one through nine to communicate situation to communications/dispatch.</b>					
<b>1. CONTACT COMMUNICATIONS/DISPATCH</b> <i>Ex: "Communications, Div. Alpha. Stand-by for Priority Medical Incident Report." (If life threatening request designated frequency be cleared for emergency traffic.)</i>					
<b>2. INCIDENT STATUS: Provide incident summary and command structure.</b>					
Nature of Injury/Illness			<i>Describe the injury (Ex: Broken leg with bleeding)</i>		
Incident Name			<i>Geographic Name + "Medical" (Ex: Trout Meadow Medical)</i>		
Incident Commander			<i>Name of IC</i>		
Patient Care			<i>Name of Care Provider (Ex: EMT Smith)</i>		
<b>3. INITIAL PATIENT ASSESSMENT: Complete this section for each patient. This is only a brief, initial assessment. Provide additional patient info after completing this 9 Line Report.</b>					
Number of Patients:	Male / Female	Age:	Weight:		
Conscious? <input type="checkbox"/> YES <input type="checkbox"/> NO = MEDEVAC!					
Breathing? <input type="checkbox"/> YES <input type="checkbox"/> NO = MEDEVAC!					
Mechanism of Injury: <i>What caused the injury?</i>					
Lat/Long (Datum WGS84) <i>Ex: N 40° 42.45' x W 123° 03.24'</i>					
<b>4. SEVERITY OF EMERGENCY, TRANSPORT PRIORITY</b>					
<b>SEVERITY</b>			<b>TRANSPORT PRIORITY</b>		
<input type="checkbox"/> <b>URGENT-RED</b> Life threatening injury or illness. <i>Ex: Unconscious, difficulty breathing, bleeding severely, 2<sup>o</sup> - 3<sup>o</sup> burns more than 4 palm sizes, heat stroke, disoriented.</i>			Ambulance or MEDEVAC helicopter. Evacuation need is <b>IMMEDIATE</b> .		
<input type="checkbox"/> <b>PRIORITY-YELLOW</b> Serious injury or illness. <i>Ex: Significant trauma, not able to walk, 2<sup>o</sup> - 3<sup>o</sup> burns not more than 1-2 palm sizes.</i>			Ambulance or consider air transport if at remote location. Evacuation may be <b>DELAYED</b> .		
<input type="checkbox"/> <b>ROUTINE-GREEN</b> Not a life threatening injury or illness. <i>Ex: Sprains, strains, minor heat-related illness.</i>			Non-Emergency. Evacuation considered <b>Routine of Convenience</b> .		
<b>5. TRANSPORT PLAN:</b>					
<b>Air Transport: (Agency Aircraft Preferred)</b>					
<input type="checkbox"/> Helispot		<input type="checkbox"/> Short-haul/Hoist		<input type="checkbox"/> Life Flight	
				<input type="checkbox"/> Other	
<b>Ground Transport: Click here to enter text.</b>					
<input type="checkbox"/> Self-Extract		<input type="checkbox"/> Carry-Out		<input type="checkbox"/> Ambulance	
				<input type="checkbox"/> Other	
<b>6. ADDITIONAL RESOURCE/EQUIPMENT NEEDS:</b>					
<input type="checkbox"/> Paramedic/EMT(s)		<input type="checkbox"/> Crew(s)		<input type="checkbox"/> SKED/Backboard/C-Collar	
<input type="checkbox"/> Burn Sheet(s)		<input type="checkbox"/> Oxygen		<input type="checkbox"/> Trauma Bag	
<input type="checkbox"/> Medication(s)		<input type="checkbox"/> IV/Fluid(s)		<input type="checkbox"/> Cardiac Monitor/AED	
<input type="checkbox"/> Other (i.e. splints, rope rescue, wheeled litter)					
<b>7. COMMUNICATIONS:</b>					
Function	Channel Name/Number	Receive (Rx)	Tone/NAC *	Transmit (Tx)	Tone/NAC *
<i>Ex: Command</i>	<i>Forest Rpt, Ch. 2</i>	<i>168.3250</i>	<i>110.9</i>	<i>171.4325</i>	<i>110.9</i>
COMMAND					
AIR-TO-GRND					
TACTICAL					
*(NAC for digital radio system)					
<b>8. EVACUATION LOCATION:</b>					
Lat/Long (Datum WGS84) <i>EX: N 40 42.45' x W 123 03.24'</i>					
Patient's ETA to Evacuation Location:					
Helispot/Extraction Size and Hazards:					
<b>9. CONTINGENCY:</b>					
<b>Considerations:</b> <i>If primary options fail, what actions can be implemented in conjunction with primary evacuation method? Be thinking ahead...</i>				<b>REMEMBER:</b> <b>Confirm ETA's of resources ordered Act according to your level of training Be Alert. Keep Calm. Think Clearly. Act Decisively.</b>	