

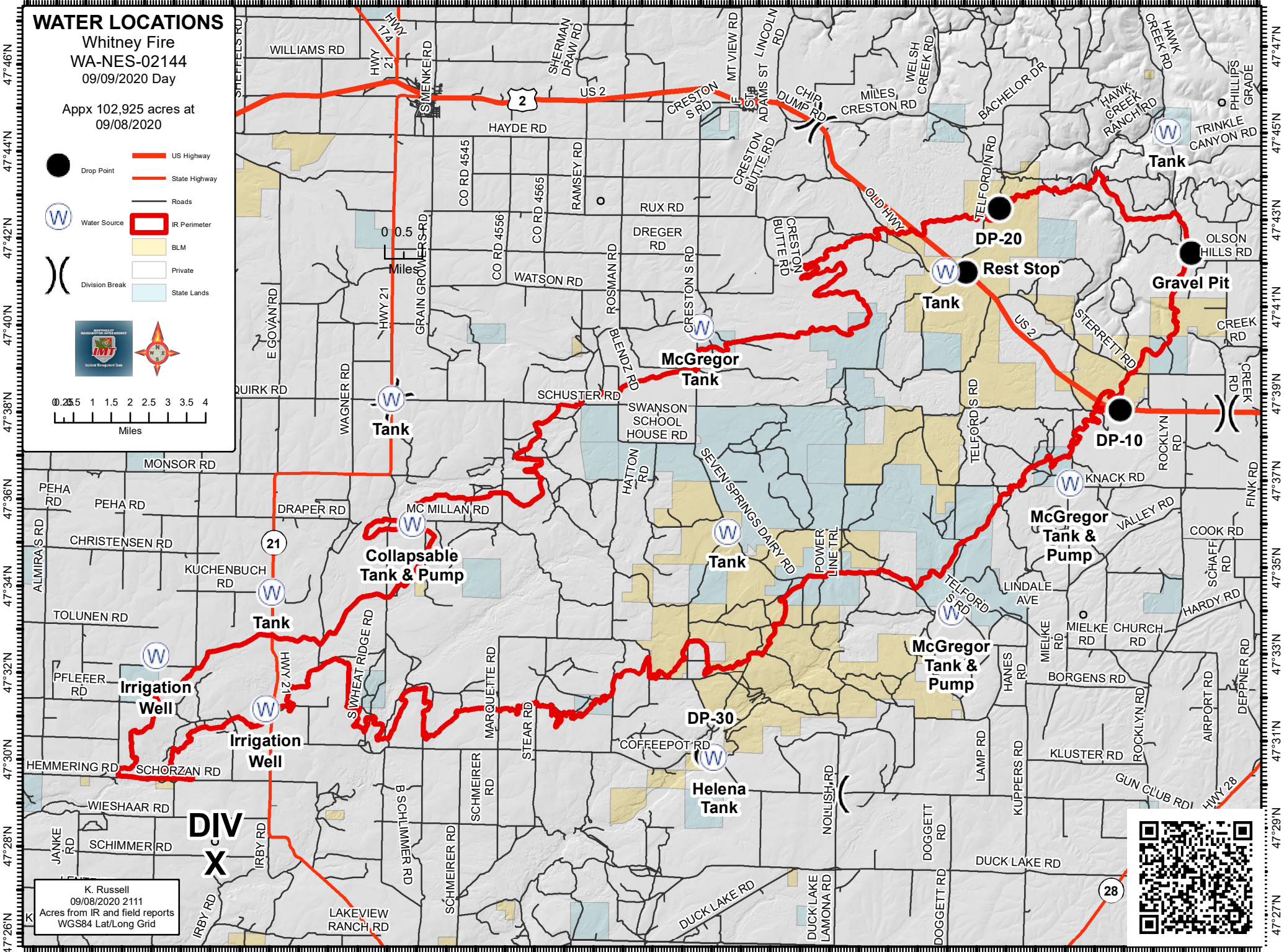
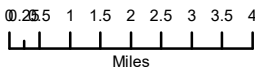
118°56'W 118°54'W 118°52'W 118°50'W 118°48'W 118°46'W 118°44'W 118°42'W 118°40'W 118°38'W 118°36'W 118°34'W 118°32'W 118°30'W 118°28'W 118°26'W 118°24'W 118°22'W 118°20'W 118°18'W 118°16'W 118°14'W

WATER LOCATIONS

Whitney Fire
WA-NES-02144
09/09/2020 Day

Appx 102,925 acres at
09/08/2020

- Drop Point
- Water Source
- Division Break
- US Highway
- State Highway
- Roads
- ▭ IR Perimeter
- ▭ BLM
- ▭ Private
- ▭ State Lands



K. Russell
09/08/2020 2111
Acres from IR and field reports
WGS84 Lat/Long Grid

DIV X



118°54'W 118°52'W 118°50'W 118°48'W 118°46'W 118°44'W 118°42'W 118°40'W 118°38'W 118°36'W 118°34'W 118°32'W 118°30'W 118°28'W 118°26'W 118°24'W 118°22'W 118°20'W 118°18'W 118°16'W 118°14'W