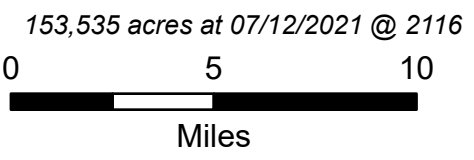


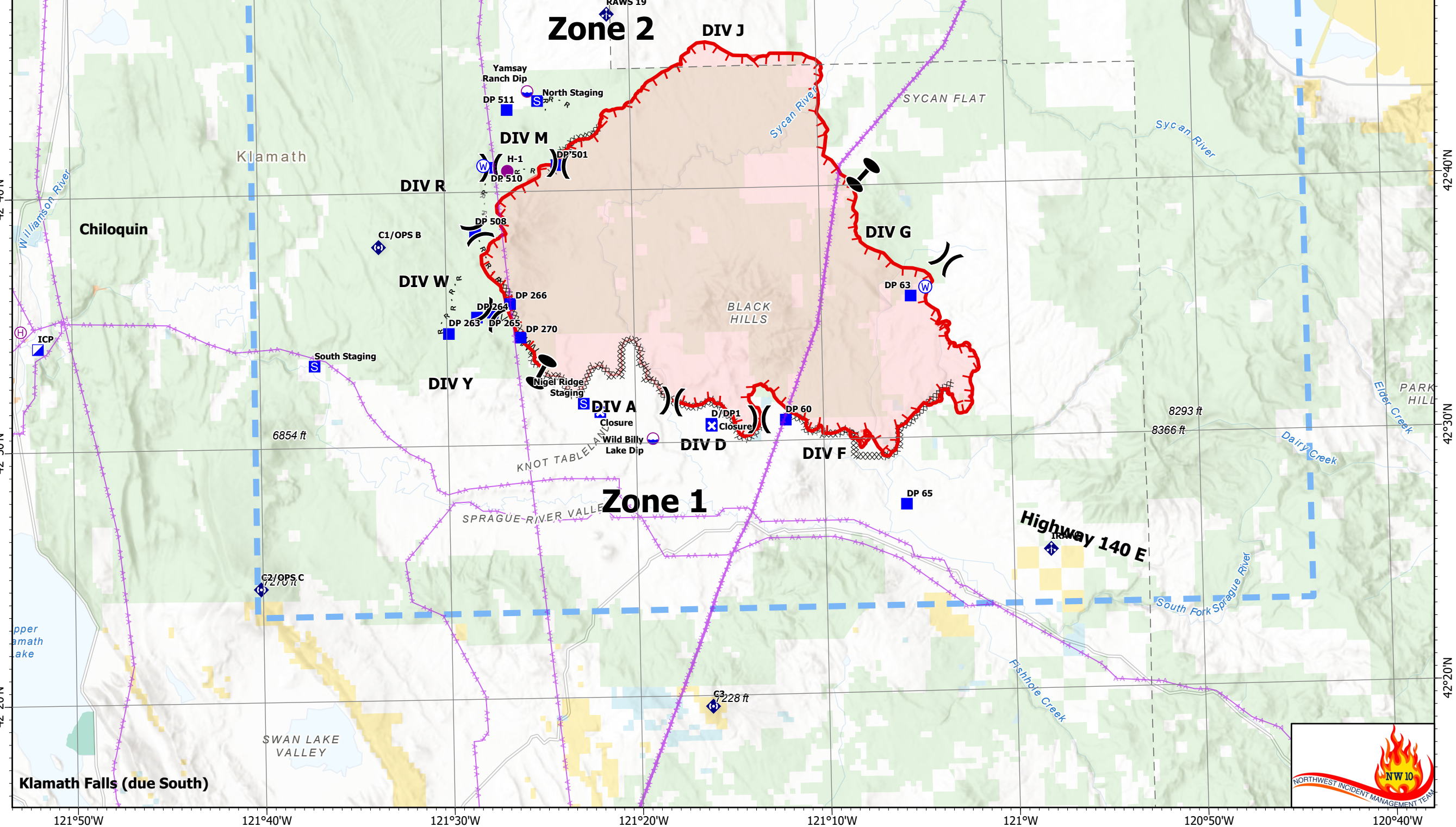
Pilot Map

Bootleg Fire
OR-FWF-210321
07/12/2021 24hr



- Dip Site
- Helispot
- Helibase
- Division Break
- Zone Break
- Incident Command Post
- Drop Point
- Closure
- Staging Area
- Value at Risk
- Mobile Weather Unit
- Repeater
- Water Source
- Wildfire Daily Fire Perimeter
- Label Point
- Completed Dozer Line
- Completed Fuel Break
- Completed Road as Line
- Planned Dozer Line
- Planned Road as Line
- TFR 1/5722 10500 MSL
- Fire Edge
- Transmission Lines
- Bureau of Indian Affairs (BIA)
- Bureau of Land Management (BLM)
- State
- US Fish and Wildlife Service (USFWS)
- US Forest Service (USFS)
- Private
- Undetermined

FC Point Type	Label	Latitude WGS84 DDM	Longitude WGS84 DDM
Drop Point	DP 501	42° 41.036' N	121° 23.972' W
Drop Point	DP 508	42° 38.465' N	121° 28.398' W
Drop Point	DP 510	42° 40.978' N	121° 27.485' W
Helispot	H-1	42° 40.831' N	121° 26.615' W
Incident Command Post	ICP	42° 34.070' N	121° 51.829' W
Dip Site	Yamsay Ranch Dip	42° 43.959' N	121° 25.477' W
Dip Site	Wild Billy Lake Dip	42° 30.178' N	121° 19.110' W
Helibase		42° 34.764' N	121° 52.741' W
Drop Point	DP 511	42° 43.243' N	121° 26.589' W
Drop Point	DP 264	42° 35.082' N	121° 28.378' W
Drop Point	DP 263	42° 34.453' N	121° 29.891' W
Drop Point	DP 270	42° 34.260' N	121° 26.061' W
Drop Point	DP 266	42° 35.593' N	121° 26.596' W
Drop Point	DP 265	42° 35.267' N	121° 27.528' W
Drop Point	D/DP1	42° 30.716' N	121° 15.987' W
Drop Point	DP 63	42° 35.604' N	121° 05.214' W
Drop Point	DP 60	42° 30.820' N	121° 12.016' W
Drop Point	DP 65	42° 27.402' N	121° 05.661' W



N
W E
S

NW IMT 10
7/12/2021 0643
Acres estimate from IR
North American 1983 Datum.
LatLong Grid

