

Air Operations

Bootleg
Zone 1
OR-FWF-210321
07/21/2021

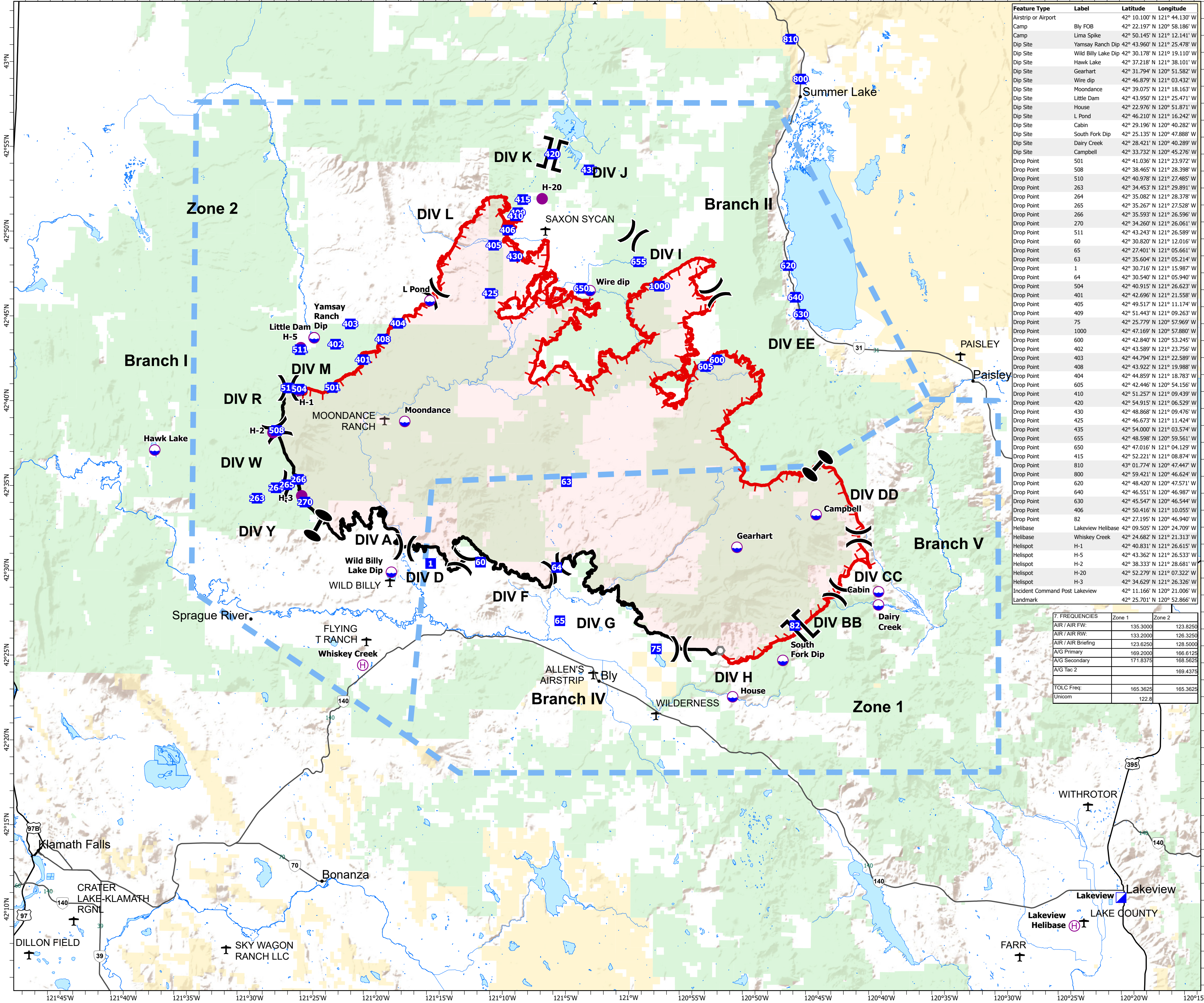
388,360 acres at 07/19/2021 @ 2130

TFR:
Region bounded by:
From: 42°52'15"N 121°40'18"W
To: 42°52'10"N 120°43'54"W
To: 42°43'17"N 120°36'47"W
To: 42°23'20"N 120°32'28"W
To: 42°23'13"N 121°40'08"W
Altitude: 10500 feet MSL

- Dip Site
- Helispot
- Helibase
- Division Break
- Branch Break
- Zone Break
- Incident Command Post
- Drop Point
- Landmark
- Temporary Flight Restriction
- Fire Edge
- Contained Line
- Wildfire Daily Fire Perimeter
- Airports
- Towns
- US Highway
- State Highway
- Streams
- Waterbodies
- BLM
- USFS
- Interstate
- US Highway
- State Highway

0 1 2 4 Miles

ODF IMT 1 GIS
7/20/2021 2:147
Acres from IR and GPS
North American 1983 Datum, LatLong Grid



Feature Type	Label	Latitude	Longitude
Airstrip or Airport		42° 10.100' N 121° 44.130' W	
Camp	Bly FOB	42° 22.197' N 120° 58.186' W	
Camp	Lima Spike	42° 50.145' N 121° 12.141' W	
Dip Site	Yamsay Ranch Dip	42° 43.960' N 121° 25.478' W	
Dip Site	Wild Billy Lake Dip	42° 30.178' N 121° 19.110' W	
Dip Site	Hawk Lake	42° 37.218' N 121° 38.101' W	
Dip Site	Gearhart	42° 31.794' N 120° 51.582' W	
Dip Site	Wire dip	42° 46.879' N 121° 03.432' W	
Dip Site	Moondance	42° 39.075' N 121° 18.163' W	
Dip Site	Little Dam	42° 43.950' N 121° 25.471' W	
Dip Site	House	42° 22.976' N 120° 51.871' W	
Dip Site	L Pond	42° 46.210' N 121° 16.242' W	
Dip Site	Cabin	42° 29.196' N 120° 40.282' W	
Dip Site	South Fork Dip	42° 25.135' N 120° 47.888' W	
Dip Site	Dairy Creek	42° 28.421' N 120° 40.289' W	
Dip Site	Campbell	42° 33.732' N 120° 45.276' W	
Drop Point	501	42° 41.036' N 121° 23.972' W	
Drop Point	508	42° 41.036' N 121° 23.972' W	
Drop Point	510	42° 40.978' N 121° 27.485' W	
Drop Point	263	42° 34.453' N 121° 29.891' W	
Drop Point	264	42° 35.082' N 121° 28.378' W	
Drop Point	265	42° 35.267' N 121° 27.528' W	
Drop Point	266	42° 35.593' N 121° 26.596' W	
Drop Point	270	42° 34.260' N 121° 26.061' W	
Drop Point	511	42° 43.243' N 121° 26.589' W	
Drop Point	60	42° 30.820' N 121° 12.016' W	
Drop Point	65	42° 27.401' N 121° 05.661' W	
Drop Point	63	42° 35.604' N 121° 05.214' W	
Drop Point	1	42° 30.716' N 121° 15.987' W	
Drop Point	64	42° 30.540' N 121° 05.940' W	
Drop Point	504	42° 40.915' N 121° 26.623' W	
Drop Point	401	42° 42.696' N 121° 21.558' W	
Drop Point	405	42° 49.517' N 121° 11.174' W	
Drop Point	409	42° 51.443' N 121° 09.263' W	
Drop Point	75	42° 25.779' N 120° 57.969' W	
Drop Point	1000	42° 47.169' N 120° 57.880' W	
Drop Point	600	42° 42.840' N 120° 53.245' W	
Drop Point	402	42° 43.589' N 121° 23.756' W	
Drop Point	403	42° 44.794' N 121° 22.589' W	
Drop Point	408	42° 43.922' N 121° 19.988' W	
Drop Point	404	42° 44.859' N 121° 18.783' W	
Drop Point	605	42° 42.446' N 120° 54.156' W	
Drop Point	410	42° 51.257' N 121° 09.439' W	
Drop Point	420	42° 54.915' N 121° 06.529' W	
Drop Point	430	42° 48.868' N 121° 09.476' W	
Drop Point	425	42° 46.673' N 121° 11.424' W	
Drop Point	435	42° 54.000' N 121° 03.574' W	
Drop Point	655	42° 48.598' N 120° 59.561' W	
Drop Point	650	42° 47.016' N 121° 04.129' W	
Drop Point	415	42° 52.221' N 121° 08.874' W	
Drop Point	810	43° 01.774' N 120° 47.447' W	
Drop Point	800	42° 59.421' N 120° 46.624' W	
Drop Point	620	42° 48.420' N 120° 47.571' W	
Drop Point	640	42° 46.551' N 120° 46.987' W	
Drop Point	630	42° 45.547' N 120° 46.544' W	
Drop Point	406	42° 50.416' N 121° 10.055' W	
Drop Point	82	42° 27.195' N 120° 46.940' W	
Helibase	Lakeview Helibase	42° 09.505' N 120° 24.709' W	
Helibase	Whiskey Creek	42° 24.682' N 121° 21.313' W	
Helispot	H-1	42° 40.831' N 121° 26.615' W	
Helispot	H-5	42° 43.362' N 121° 26.533' W	
Helispot	H-2	42° 38.333' N 121° 28.681' W	
Helispot	H-20	42° 52.279' N 121° 07.322' W	
Helispot	H-3	42° 34.629' N 121° 26.326' W	
Incident Command Post	Lakeview	42° 11.166' N 120° 21.006' W	
Landmark		42° 25.701' N 120° 52.866' W	

7. FREQUENCIES	Zone 1	Zone 2
AIR / AIR FW:	135.3000	123.8250
AIR / AIR RW:	133.2000	126.3250
AIR / AIR Briefing:	123.6250	128.5000
A/G Primary:	169.2000	166.6125
A/G Secondary:	171.8375	168.5625
A/G Tac 2:		169.4375
TOLC Freq:	165.3625	165.3625
Unicom:	122.8	