

Air Operations

Bootleg
Zone 1
OR-FWF-210321
07/23/2021

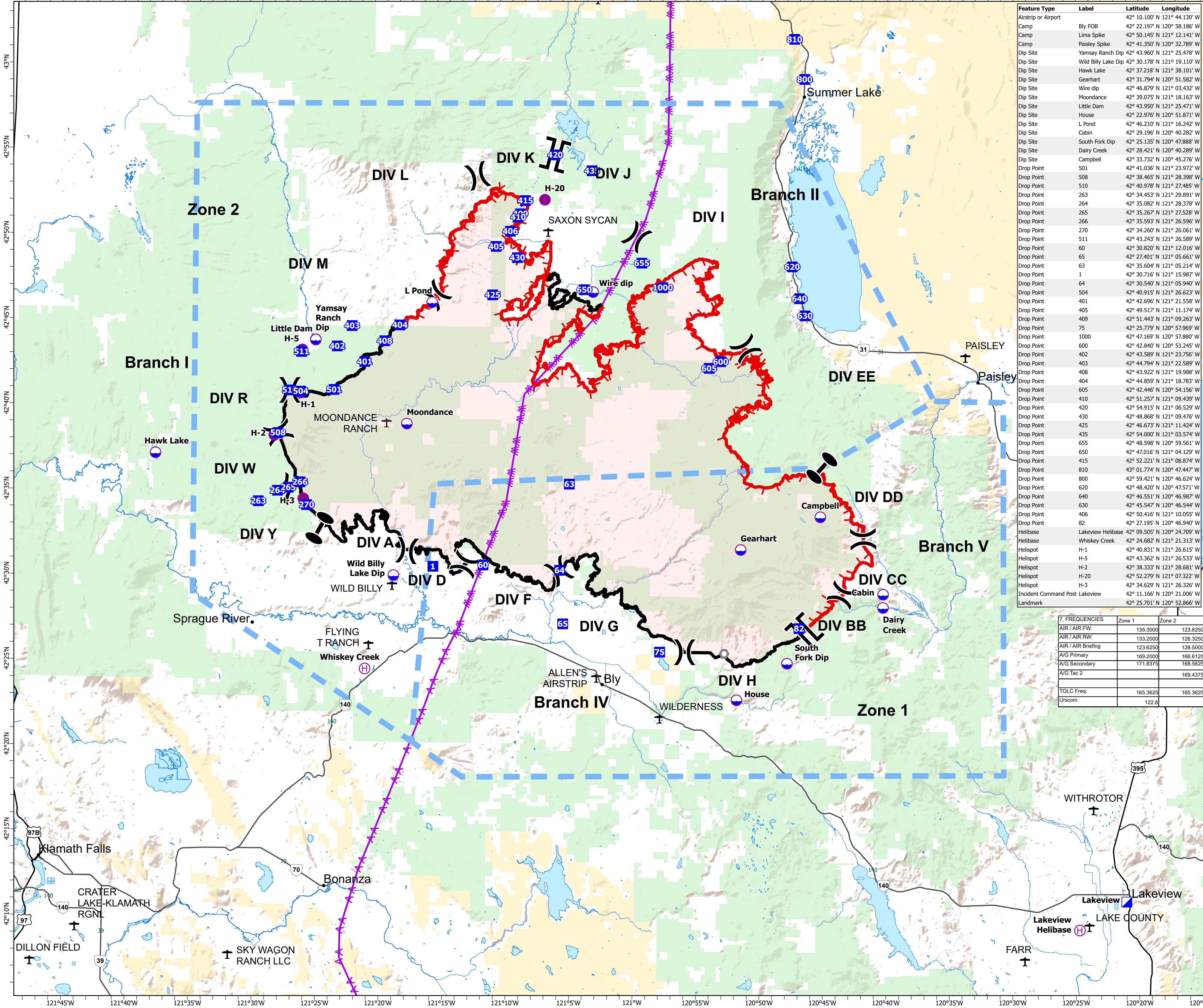
396,978 acres at 07/22/2021 @ 0730

TFR:
Region bounded by:
From: 42°52'15"N 121°40'18"W
To: 42°52'10"N 120°43'54"W
To: 42°43'17"N 120°36'47"W
To: 42°23'20"N 120°32'28"W
To: 42°23'13"N 121°40'08"W
Altitude: 10500 feet MSL

- Dip Site
- Helispot
- Helibase
- Division Break
- Branch Break
- Zone Break
- Incident Command Post
- Drop Point
- Landmark
- Aerial Hazard
- Temporary Flight Restriction
- Fire Edge
- Contained Line
- Wildfire Daily Fire Perimeter
- Airports
- Towns
- US Highway
- State Highway
- Streams
- Waterbodies
- BLM
- USFS
- Interstate
- US Highway
- State Highway

0 1 2 4 Miles

ODF IMT 1 GIS
7/22/2021 2036
Acres from IR and GPS
North American 1983 Datum, LatLong Grid



Feature Type	Label	Latitude	Longitude
Airstrip or Airport	Bly FOB	42° 22.197' N	120° 58.186' W
Camp	Lima Spike	42° 50.145' N	121° 12.141' W
Camp	Paisley Spike	42° 41.350' N	120° 32.789' W
Dip Site	Yamsay Ranch Dip	42° 43.960' N	121° 25.478' W
Dip Site	Wild Billy Lake Dip	42° 30.178' N	121° 19.110' W
Dip Site	Hawk Lake	42° 37.218' N	121° 38.101' W
Dip Site	Gearhart	42° 31.794' N	120° 51.582' W
Dip Site	Wire dip	42° 46.879' N	121° 03.432' W
Dip Site	Moondance	42° 39.075' N	121° 18.163' W
Dip Site	Little Dam	42° 43.950' N	121° 25.471' W
Dip Site	House	42° 22.976' N	120° 51.871' W
Dip Site	L Pond	42° 46.210' N	121° 16.242' W
Dip Site	Cabin	42° 29.196' N	120° 40.282' W
Dip Site	South Fork Dip	42° 25.135' N	120° 47.888' W
Dip Site	Dairy Creek	42° 28.421' N	120° 40.289' W
Dip Site	Campbell	42° 33.732' N	120° 45.276' W
Dip Site	501	42° 41.036' N	121° 23.972' W
Dip Site	508	42° 38.465' N	121° 28.398' W
Dip Site	510	42° 40.978' N	121° 27.485' W
Dip Site	263	42° 34.453' N	121° 29.891' W
Dip Site	264	42° 35.082' N	121° 28.378' W
Dip Site	265	42° 35.267' N	121° 27.528' W
Dip Site	266	42° 35.593' N	121° 26.596' W
Dip Site	270	42° 34.260' N	121° 26.061' W
Dip Site	511	42° 43.243' N	121° 26.589' W
Dip Site	60	42° 30.820' N	121° 12.016' W
Dip Site	65	42° 27.401' N	121° 05.661' W
Dip Site	63	42° 35.604' N	121° 05.214' W
Dip Site	1	42° 30.716' N	121° 15.987' W
Dip Site	64	42° 30.540' N	121° 05.940' W
Dip Site	504	42° 40.915' N	121° 26.623' W
Dip Site	401	42° 42.696' N	121° 21.558' W
Dip Site	405	42° 49.517' N	121° 11.174' W
Dip Site	409	42° 51.443' N	121° 09.263' W
Dip Site	75	42° 25.779' N	120° 57.969' W
Dip Site	1000	42° 47.169' N	120° 57.880' W
Dip Site	600	42° 42.840' N	120° 53.245' W
Dip Site	402	42° 43.589' N	121° 23.756' W
Dip Site	403	42° 44.794' N	121° 22.589' W
Dip Site	408	42° 43.922' N	121° 19.988' W
Dip Site	404	42° 44.859' N	121° 18.783' W
Dip Site	605	42° 42.446' N	120° 54.156' W
Dip Site	410	42° 51.257' N	121° 09.439' W
Dip Site	420	42° 54.915' N	121° 06.529' W
Dip Site	430	42° 48.868' N	121° 09.476' W
Dip Site	425	42° 46.673' N	121° 11.424' W
Dip Site	435	42° 54.000' N	121° 03.574' W
Dip Site	655	42° 48.598' N	120° 59.561' W
Dip Site	650	42° 47.016' N	121° 04.129' W
Dip Site	415	42° 52.221' N	121° 08.874' W
Dip Site	810	43° 01.774' N	120° 47.447' W
Dip Site	800	42° 59.421' N	120° 46.624' W
Dip Site	620	42° 48.420' N	120° 47.571' W
Dip Site	640	42° 46.551' N	120° 46.987' W
Dip Site	630	42° 45.547' N	120° 46.544' W
Dip Site	406	42° 50.416' N	121° 10.055' W
Dip Site	82	42° 27.195' N	120° 46.940' W
Helibase	Lakeview Helibase	42° 09.505' N	120° 24.709' W
Helibase	Whiskey Creek	42° 24.682' N	121° 21.313' W
Helispot	H-1	42° 40.831' N	121° 26.615' W
Helispot	H-5	42° 43.362' N	121° 26.533' W
Helispot	H-2	42° 38.333' N	121° 28.681' W
Helispot	H-20	42° 52.279' N	121° 07.322' W
Helispot	H-3	42° 34.629' N	121° 26.326' W
Incident Command Post	Lakeview	42° 11.166' N	120° 21.006' W
Landmark		42° 25.701' N	120° 52.866' W

7. FREQUENCIES	Zone 1	Zone 2
AIR / AIR FW:	135.3000	123.8250
AIR / AIR RW:	133.2000	126.3250
AIR / AIR Briefing:	123.6250	128.5000
A/G Primary:	169.2000	166.6125
A/G Secondary:	171.8375	168.5625
A/G Tac 2:		169.4375
TOLC Freq:	165.3625	165.3625
Unicom:	122.8	