

# Air Ops

07/23/2021 24hr

Bootleg Fire

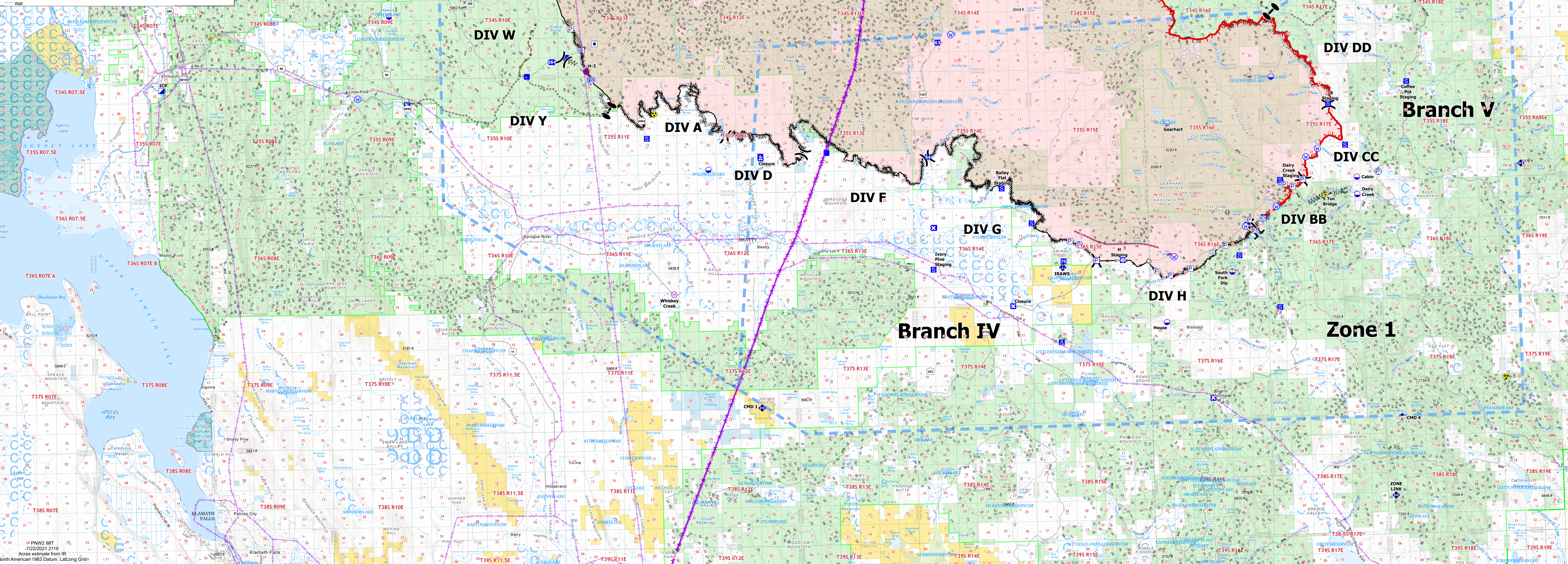
OR-FWF-210321

399,359 acres at 07/21/2021 @ 2000



0 1.5 3 6 9 Miles

- Dip Site
- Helibase
- Division Break
- Branch Break
- Zone Break
- Incident Command Post
- Drop Point
- Closure
- Camp
- Staging Area
- Lookout
- Hot Spot - Spot Fire
- Value at Risk
- Other
- Landmark
- Gate
- Mobile Weather Unit
- Internet Access
- Repeater
- Hazard
- Water Source
- Zone Break
- Township/Range
- Section
- Wildfire Daily Fire Perimeter
- Bureau of Indian Affairs (BIA)
- Bureau of Land Management (BLM)
- Bureau of Reclamation (BOR)
- National Park Service (NPS)
- State
- US Fish and Wildlife Service (USFWS)
- US Forest Service (USFS)
- Private
- Trail
- Tunnel/Bridge
- Paved Road
- Gravel Road
- Dirt Road
- Unimproved Roads
- Closed Roads
- Railroad
- Gaging Station
- Rapids
- Sink/Rise
- Spring/Deep
- Waterfall
- Well
- Dam / Weir
- Flume
- Nonperennial Shore
- Well
- Bay/Inlet
- Canal / Ditch
- Inundation Area
- Bank
- Stream / River
- Stream / River (Intermittent)
- Stream/River, Artificial Path
- Canal / Ditch
- Pipeline
- Pipeline Underground
- Stream/River Intertributary
- Proclaimed FS Boundary
- Administrative FS Boundary
- Ranger District Boundary
- FS Wilderness Boundary
- Approved or Proclaimed NPS Boundary
- Approved or Proclaimed USFS Boundary
- Area of Critical Environmental Concern
- Special Management Boundary
- Unknown
- State Boundary
- County Boundary
- County Subdivision Boundary
- Incorporated Place
- Census Designated Place
- Lake / Pond
- Lake / Pond (Intermittent)
- Playa
- Reservoir
- Township
- Proprietary Section
- Section
- Freshwater Emergent Wetland
- Freshwater Forested/Shrub Wetland
- Freshwater Pond
- World Hillshade
- Tollway
- Scenic Byway
- Wild and Scenic River
- Forest Service Land
- Other Management Boundary
- State Public Lands
- Other State Lands
- U.S. Fish & Wildlife Service Lands
- Bureau of Land Management Lands
- National Park Service Lands
- Other Federal Lands
- Private: Local Government, Undesignated
- American Indian Reservation Land
- Utah Leap
- State Boundary Fill
- Mexico Canada
- HIFLD Ocean



PC Point Type	Label	Latitude WGS84	Longitude WGS84	PC Point Type	Label	Latitude WGS84	Longitude WGS84
Drop Point	001	42.18147° N	122.18147° W	Drop Point	002	42.18147° N	122.18147° W
Drop Point	003	42.18147° N	122.18147° W	Drop Point	004	42.18147° N	122.18147° W
Drop Point	005	42.18147° N	122.18147° W	Drop Point	006	42.18147° N	122.18147° W
Drop Point	007	42.18147° N	122.18147° W	Drop Point	008	42.18147° N	122.18147° W
Drop Point	009	42.18147° N	122.18147° W	Drop Point	010	42.18147° N	122.18147° W
Drop Point	011	42.18147° N	122.18147° W	Drop Point	012	42.18147° N	122.18147° W
Drop Point	013	42.18147° N	122.18147° W	Drop Point	014	42.18147° N	122.18147° W
Drop Point	015	42.18147° N	122.18147° W	Drop Point	016	42.18147° N	122.18147° W
Drop Point	017	42.18147° N	122.18147° W	Drop Point	018	42.18147° N	122.18147° W
Drop Point	019	42.18147° N	122.18147° W	Drop Point	020	42.18147° N	122.18147° W
Drop Point	021	42.18147° N	122.18147° W	Drop Point	022	42.18147° N	122.18147° W
Drop Point	023	42.18147° N	122.18147° W	Drop Point	024	42.18147° N	122.18147° W
Drop Point	025	42.18147° N	122.18147° W	Drop Point	026	42.18147° N	122.18147° W
Drop Point	027	42.18147° N	122.18147° W	Drop Point	028	42.18147° N	122.18147° W
Drop Point	029	42.18147° N	122.18147° W	Drop Point	030	42.18147° N	122.18147° W
Drop Point	031	42.18147° N	122.18147° W	Drop Point	032	42.18147° N	122.18147° W
Drop Point	033	42.18147° N	122.18147° W	Drop Point	034	42.18147° N	122.18147° W
Drop Point	035	42.18147° N	122.18147° W	Drop Point	036	42.18147° N	122.18147° W
Drop Point	037	42.18147° N	122.18147° W	Drop Point	038	42.18147° N	122.18147° W
Drop Point	039	42.18147° N	122.18147° W	Drop Point	040	42.18147° N	122.18147° W
Drop Point	041	42.18147° N	122.18147° W	Drop Point	042	42.18147° N	122.18147° W
Drop Point	043	42.18147° N	122.18147° W	Drop Point	044	42.18147° N	122.18147° W
Drop Point	045	42.18147° N	122.18147° W	Drop Point	046	42.18147° N	122.18147° W
Drop Point	047	42.18147° N	122.18147° W	Drop Point	048	42.18147° N	122.18147° W
Drop Point	049	42.18147° N	122.18147° W	Drop Point	050	42.18147° N	122.18147° W
Drop Point	051	42.18147° N	122.18147° W	Drop Point	052	42.18147° N	122.18147° W
Drop Point	053	42.18147° N	122.18147° W	Drop Point	054	42.18147° N	122.18147° W
Drop Point	055	42.18147° N	122.18147° W	Drop Point	056	42.18147° N	122.18147° W
Drop Point	057	42.18147° N	122.18147° W	Drop Point	058	42.18147° N	122.18147° W
Drop Point	059	42.18147° N	122.18147° W	Drop Point	060	42.18147° N	122.18147° W
Drop Point	061	42.18147° N	122.18147° W	Drop Point	062	42.18147° N	122.18147° W
Drop Point	063	42.18147° N	122.18147° W	Drop Point	064	42.18147° N	122.18147° W
Drop Point	065	42.18147° N	122.18147° W	Drop Point	066	42.18147° N	122.18147° W
Drop Point	067	42.18147° N	122.18147° W	Drop Point	068	42.18147° N	122.18147° W
Drop Point	069	42.18147° N	122.18147° W	Drop Point	070	42.18147° N	122.18147° W
Drop Point	071	42.18147° N	122.18147° W	Drop Point	072	42.18147° N	122.18147° W
Drop Point	073	42.18147° N	122.18147° W	Drop Point	074	42.18147° N	122.18147° W
Drop Point	075	42.18147° N	122.18147° W	Drop Point	076	42.18147° N	122.18147° W
Drop Point	077	42.18147° N	122.18147° W	Drop Point	078	42.18147° N	122.18147° W
Drop Point	079	42.18147° N	122.18147° W	Drop Point	080	42.18147° N	122.18147° W
Drop Point	081	42.18147° N	122.18147° W	Drop Point	082	42.18147° N	122.18147° W
Drop Point	083	42.18147° N	122.18147° W	Drop Point	084	42.18147° N	122.18147° W
Drop Point	085	42.18147° N	122.18147° W	Drop Point	086	42.18147° N	122.18147° W
Drop Point	087	42.18147° N	122.18147° W	Drop Point	088	42.18147° N	122.18147° W
Drop Point	089	42.18147° N	122.18147° W	Drop Point	090	42.18147° N	122.18147° W
Drop Point	091	42.18147° N	122.18147° W	Drop Point	092	42.18147° N	122.18147° W
Drop Point	093	42.18147° N	122.18147° W	Drop Point	094	42.18147° N	122.18147° W
Drop Point	095	42.18147° N	122.18147° W	Drop Point	096	42.18147° N	122.18147° W
Drop Point	097	42.18147° N	122.18147° W	Drop Point	098	42.18147° N	122.18147° W
Drop Point	099	42.18147° N	122.18147° W	Drop Point	100	42.18147° N	122.18147° W
Drop Point	101	42.18147° N	122.18147° W	Drop Point	102	42.18147° N	122.18147° W
Drop Point	103	42.18147° N	122.18147° W	Drop Point	104	42.18147° N	122.18147° W
Drop Point	105	42.18147° N	122.18147° W	Drop Point	106	42.18147° N	122.18147° W
Drop Point	107	42.18147° N	122.18147° W	Drop Point	108	42.18147° N	122.18147° W
Drop Point	109	42.18147° N	122.18147° W	Drop Point	110	42.18147° N	122.18147° W
Drop Point	111	42.18147° N	122.18147° W	Drop Point	112	42.18147° N	122.18147° W
Drop Point	113	42.18147° N	122.18147° W	Drop Point	114	42.18147° N	122.18147° W
Drop Point	115	42.18147° N	122.18147° W	Drop Point	116	42.18147° N	122.18147° W
Drop Point	117	42.18147° N	122.18147° W	Drop Point	118	42.18147° N	122.18147° W
Drop Point	119	42.18147° N	122.18147° W	Drop Point	120	42.18147° N	122.18147° W
Drop Point	121	42.18147° N	122.18147° W	Drop Point	122	42.18147° N	122.18147° W
Drop Point	123	42.18147° N	122.18147° W	Drop Point	124	42.18147° N	122.18147° W
Drop Point	125	42.18147° N	122.18147° W	Drop Point	126	42.18147° N	122.18147° W
Drop Point	127	42.18147° N	122.18147° W	Drop Point	128	42.18147° N	122.18147° W
Drop Point	129	42.18147° N	122.18147° W	Drop Point	130	42.18147° N	122.18147° W
Drop Point	131	42.18147° N	122.18147° W	Drop Point	132	42.18147° N	122.18147° W
Drop Point	133	42.18147° N	122.18147° W	Drop Point	134	42.18147° N	122.18147° W
Drop Point	135	42.18147° N	122.18147° W	Drop Point	136	42.18147° N	122.18147° W
Drop Point	137	42.18147° N	122.18147° W	Drop Point	138	42.18147° N	122.18147° W
Drop Point	139	42.18147° N	122.18147° W	Drop Point	140	42.18147° N	122.18147° W
Drop Point	141	42.18147° N	122.18147° W	Drop Point	142	42.18147° N	122.18147° W
Drop Point	143	42.18147° N	122.18147° W	Drop Point	144	42.18147° N	122.18147° W
Drop Point	145	42.18147° N	122.18147° W	Drop Point	146	42.18147° N	122.18147° W
Drop Point	147	42.18147° N	122.18147° W	Drop Point	148	42.18147° N	122.18147° W
Drop Point	149	42.18147° N	122.18147° W	Drop Point	150	42.18147° N	122.18147° W
Drop Point	151	42.18147° N	122.18147° W	Drop Point	152	42.18147° N	122.18147° W
Drop Point	153	42.18147° N	122.18147° W	Drop Point	154	42.18147° N	122.18147° W
Drop Point	155	42.18147° N	122.18147° W	Drop Point	156	42.18147° N	122.18147° W
Drop Point	157	42.18147° N	122.18147° W	Drop Point	158	42.18147° N	122.18147° W
Drop Point	159	42.18147° N	122.18147° W	Drop Point	160	42.18147° N	122.18147° W
Drop Point	161	42.18147° N	122.18147° W	Drop Point	162	42.18147° N	122.18147° W
Drop Point	163	42.18147° N	122.18147° W	Drop Point	164	42.18147° N	122.18147° W
Drop Point	165	42.18147° N	122.18147° W	Drop Point	166	42.18147° N	122.18147° W
Drop Point	167	42.18147° N	122.18147° W	Drop Point	168	42.18147° N	122.18147° W
Drop Point	169	42.18147° N	122.18147° W	Drop Point	170	42.18147° N	122.18147° W
Drop Point	171	42.18147° N	122.18147° W	Drop Point	172	42.18147° N	122.18147° W
Drop Point	173	42.18147° N	122.18147° W	Drop Point	174	42.18147° N	122.18147° W
Drop Point	175	42.18147° N	122.18147° W	Drop Point	176	42.18147° N	122.18147° W
Drop Point	177	42.18147° N	122.18147° W	Drop Point	178	42.18147° N	122.18147° W
Drop Point	179	42.18147° N	122.18147° W	Drop Point	180	42.18147° N	122.18147° W
Drop Point	181	42.18147° N	122.18147° W	Drop Point	182	42.18147° N	122.18147° W
Drop Point	183	42.18147° N	122.18147° W	Drop Point	184	42.18147° N	122.18147° W
Drop Point	185	42.18147° N	122.18147° W	Drop Point	186	42.18147° N	122.18147° W
Drop Point	187	42.18147° N	122.18147° W	Drop Point	188	42.18147° N	122.18147° W
Drop Point	189	42.18147° N	122.18147° W	Drop Point	190	42.18147° N	122.18147° W
Drop Point	191	42.18147° N	122.18147° W	Drop Point	192	42.18147° N	122.18147° W
Drop Point	193	42.18147° N	122.18147° W	Drop Point	194	42.18147° N	122.18147° W
Drop Point	195	42.18147° N	122.18147° W	Drop Point	196	42.18147° N	122.18147° W
Drop Point	197	42.18147° N	122.18147° W	Drop Point	198	42.18147° N	122.18147° W
Drop Point	199	42.18147° N	122.18147° W	Drop Point	200	42.18147° N	122.18147° W