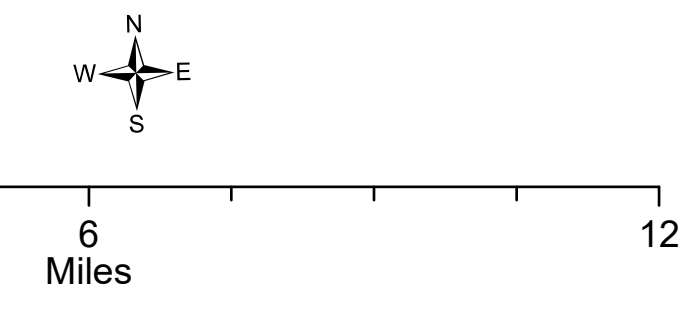
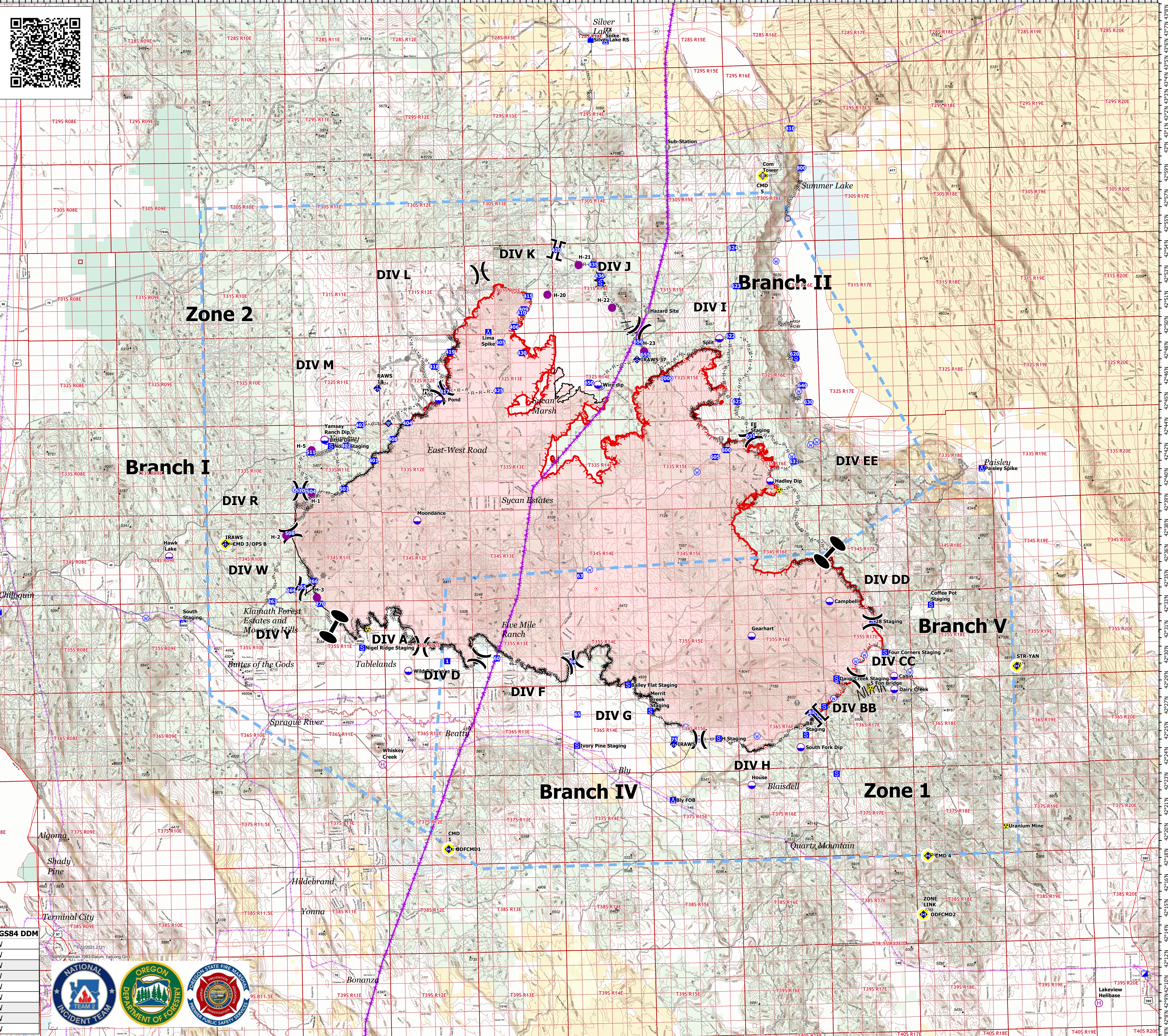


# Communications

07/23/2021  
 Bootleg Fire  
 OR-FWF-210321  
 399,359 acres at 07/21/2021 @ 2000



- Airstrip or Airport
- Dip Site
- Helispot
- Helibase
- ( Division Break
- | Branch Break
- | Zone Break
- | Incident Command Post
- | Drop Point
- | Camp
- | Staging Area
- | Lookout
- Hot Spot - Spot Fire
- Value at Risk
- Other
- Landmark
- Gate
- Bridge
- ♦ Mobile Weather Unit
- ♦ Internet Access
- ♦ Repeater
- ♦ Hazard
- ♦ Water Source
- ♦ Completed Dozer Line
- / Completed Fuel Break
- / Completed Hand Line
- / Completed Mixed Construction Line
- / Completed Plow Line
- / Completed Road as Line
- / Planned Dozer Line
- / Planned Road as Line
- / Planned Secondary Line
- / Access or Improved Road
- Other
- Repair Line
- Road Repair
- Aerial Hazard
- Temporary Flight Restriction
- Fire Edge
- Contained Line
- Wildfire Daily Fire Perimeter
- Transmission Lines
- Zone Break
- Primary Highway
- Secondary Highway
- Paved Road
- Gravel Road
- Dirt Roads
- Unimproved Roads
- Closed Roads
- Trail
- Township/Range
- Section Protracted
- Section
- Department Of Defense (DOD)
- Bureau of Land Management (BLM)
- National Park Service (NPS)
- US Forest Service (USFS)
- US Fish and Wildlife (USFW)
- Bureau of Reclamation (USBR)
- Bureau of Indian Affairs (BIA)
- Other Federal
- State
- Local
- Private or Unknown



FC Point Type	Label	Latitude WGS84 DDM	Longitude WGS84 DDM
Repeater	CMD 1	42° 19.581' N	121° 16.176' W
Repeater	CMD 2	42° 30.815' N	122° 08.761' W
Repeater	CMD 3/OPS B	42° 37.907' N	121° 33.569' W
Repeater	CMD 4	42° 18.513' N	120° 37.970' W
Repeater	CMD 5	42° 59.017' N	120° 49.751' W
Repeater	ODFCMD1	42° 19.581' N	121° 16.176' W
Repeater	ODFCMD2	42° 15.050' N	120° 38.455' W
Repeater	STR-YAN	42° 29.596' N	120° 30.451' W
Repeater	ZONE LINK	42° 15.050' N	120° 38.455' W

