

Operations

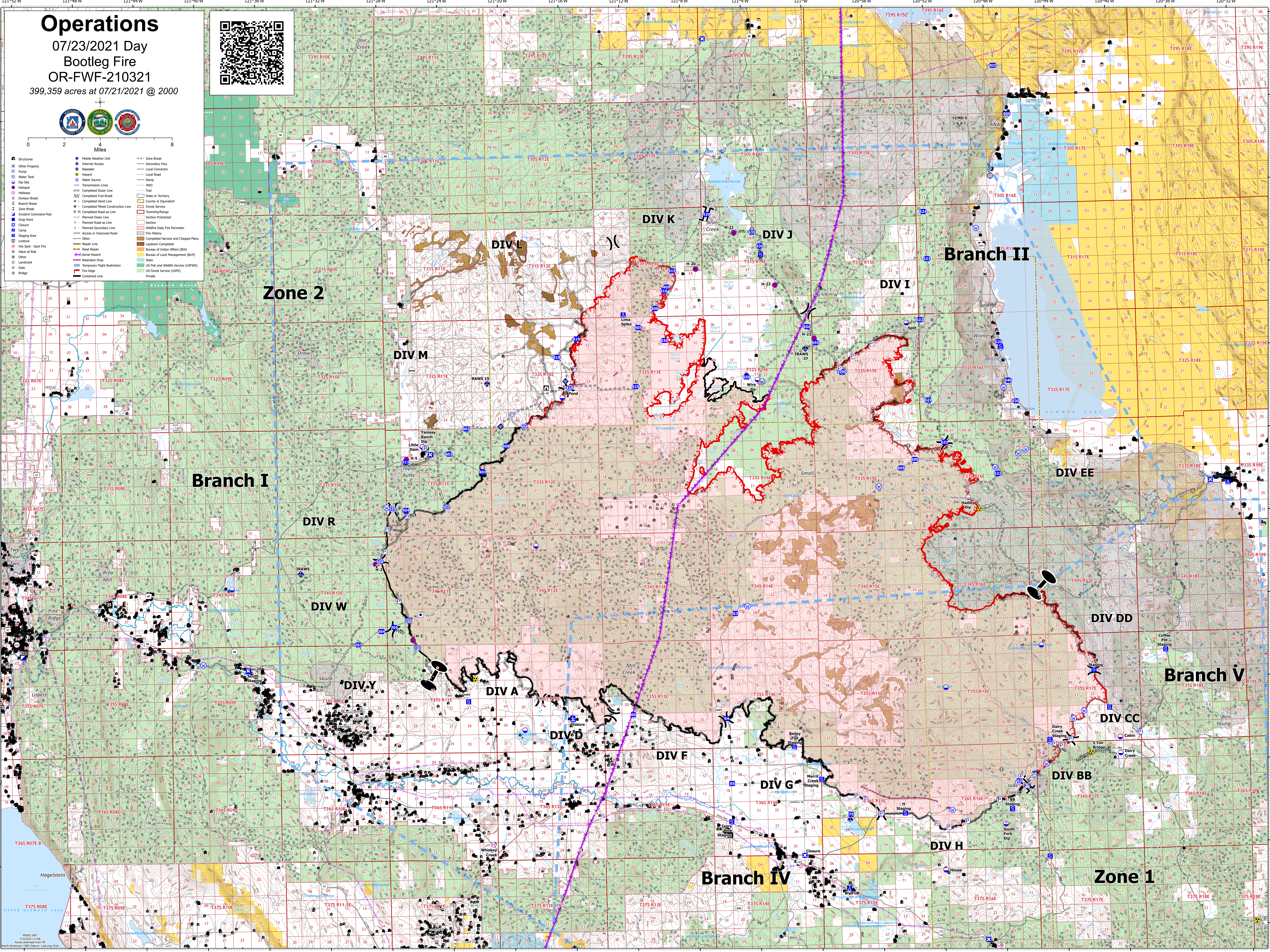
07/23/2021 Day
Bootleg Fire
OR-FWF-210321

399,359 acres at 07/21/2021 @ 2000



0 2 4 8 Miles

- Structures
 - Other Property
 - Pump
 - Water Tank
 - Dip Site
 - Hilltop
 - Helibase
 - Division Break
 - Branch Break
 - Incident Command Post
 - Drop Point
 - Closure
 - Camp
 - Staging Area
 - Lookout
 - HOT Spot - Spot Fire
 - Valued at Risk
 - Other
 - Landmark
 - Gate
 - Bridge
- Mobile Weather Unit
 - Internet Access
 - Repeater
 - Hazard
 - Water Source
 - Transmission Lines
 - Completed Outer Line
 - Completed Fuel Break
 - Completed Head Line
 - Completed Mixed Construction Line
 - R-R Completed Road as Line
 - Planned Outer Line
 - Planned Road as Line
 - Planned Secondary Line
 - Access or Improved Road
 - Other
 - Repair Line
 - Road Repair
 - Aerial Hazard
 - Retardant Drop
 - Temporary Flight Restriction
 - Fire Edge
 - Contained Line
- Zone Break
 - Secondary Hwy
 - Local Connector
 - Local Road
 - Warp
 - WFO
 - Trail
 - State or Territory
 - County or Equivalent
 - Forest Service
 - Township/Range
 - Section
 - Section Protected
 - Wildfire Daily Fire Perimeter
 - Fire History
 - Completed Harvest and Chipped Plans
 - Landscape Completed
 - Bureau of Indian Affairs (BIA)
 - Bureau of Land Management (BLM)
 - State
 - US Fish and Wildlife Service (USFWS)
 - US Forest Service (USFS)
 - Private



Zone 2

Branch I

Branch II

Branch V

Branch IV

Zone 1

DIV L

DIV K

DIV J

DIV I

DIV M

DIV R

DIV W

DIV Y

DIV A

DIV D

DIV F

DIV G

DIV H

DIV DD

DIV CC

DIV BB

121°52'W 121°48'W 121°44'W 121°40'W 121°36'W 121°32'W 121°28'W 121°24'W 121°20'W 121°16'W 121°12'W 121°8'W 121°4'W 121°W 120°56'W 120°52'W 120°48'W 120°44'W 120°40'W 120°36'W 120°32'W

42°48'N 42°44'N 42°40'N 42°36'N 42°32'N 42°28'N 42°24'N 42°20'N