

Operations

07/23/2021 Day
Bootleg Fire
OR-FWF-210321

399,359 acres at 07/21/2021 @ 2000

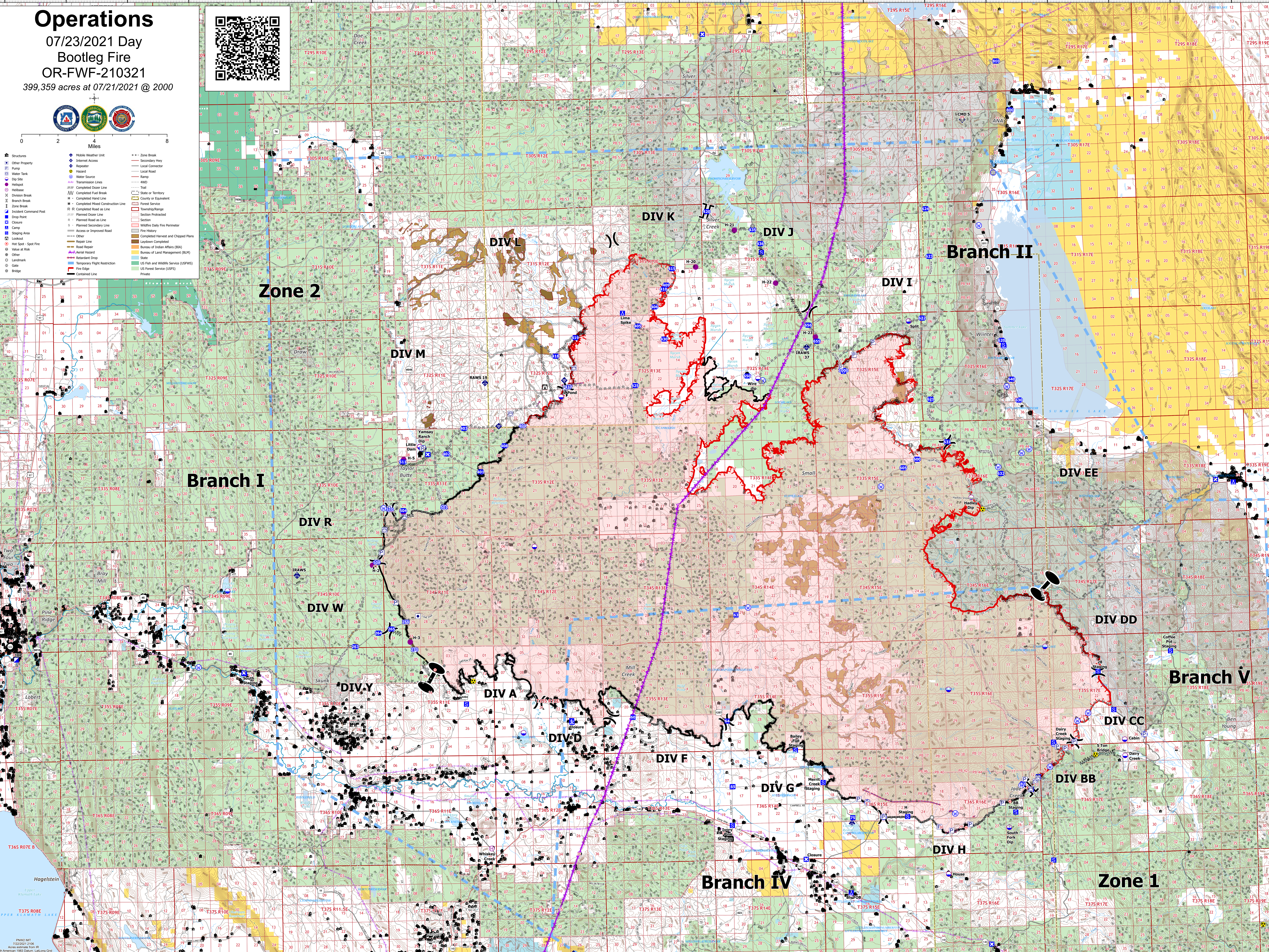


0 2 4 8 Miles

- Structures
- Other Property
- Pump
- Water Tank
- Dip Site
- Hilltop
- Helibase
- Division Break
- Branch Break
- Incident Command Post
- Drop Point
- Closure
- Camp
- Staging Area
- Lookout
- HOT Spot - Spot Fire
- Value at Risk
- Other
- Landmark
- Gate
- Bridge

- Mobile Weather Unit
- Internet Access
- Repeater
- Hazard
- Water Source
- Transmission Lines
- Completed Outer Line
- Completed Fuel Break
- Completed Head Line
- Completed Mixed Construction Line
- R-R Completed Road as Line
- Planned Outer Line
- Planned Road as Line
- Planned Secondary Line
- Access or Improved Road
- Other
- Repair Line
- Road Repair
- Aerial Hazard
- Retardant Drop
- Temporary Flight Restriction
- Fire Edge
- Contained Line

- Zone Break
- Secondary Hwy
- Local Connector
- Local Road
- Warp
- WFO
- Trail
- State or Territory
- County or Equivalent
- Forest Service
- Township/Range
- Section
- Section Protected
- Wildfire Daily Fire Perimeter
- Fire History
- Completed Harvest and Chipped Plans
- Landscape Completed
- Bureau of Indian Affairs (BIA)
- Bureau of Land Management (BLM)
- State
- US Fish and Wildlife Service (USFWS)
- US Forest Service (USFS)
- Private



Zone 2

Branch I

Branch II

Branch V

Branch IV

Zone 1

DIV K

DIV J

DIV I

DIV M

DIV R

DIV W

DIV Y

DIV A

DIV D

DIV F

DIV G

DIV H

DIV DD

DIV CC

DIV BB

121°52'W 121°48'W 121°44'W 121°40'W 121°36'W 121°32'W 121°28'W 121°24'W 121°20'W 121°16'W 121°12'W 121°8'W 121°4'W 121°W 120°56'W 120°52'W 120°48'W 120°44'W 120°40'W 120°36'W 120°32'W