

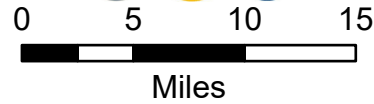
Pilot Map

7/23/2021

Bootleg Fire

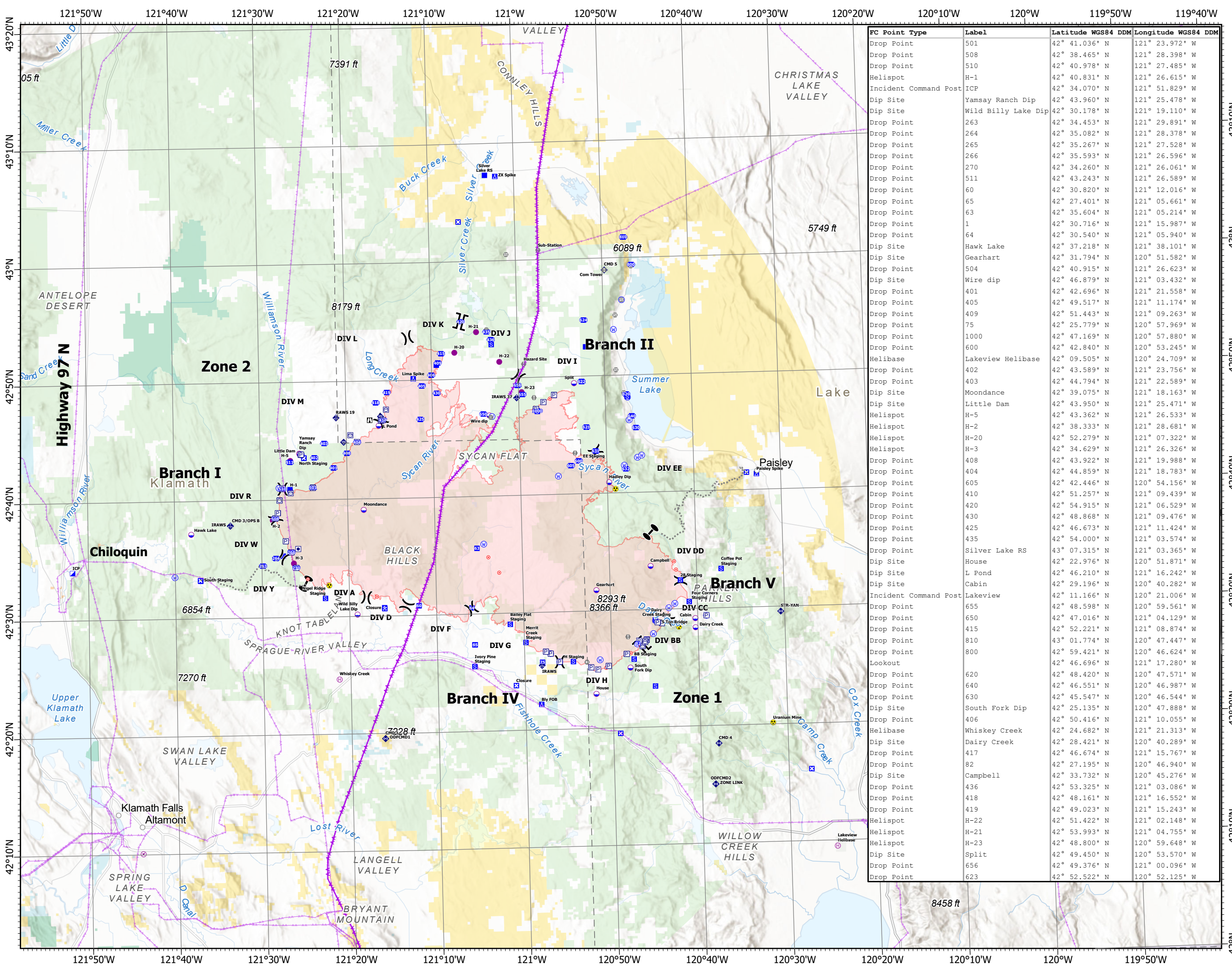
OR-FWF-210321

399,359 acres at 07/21/2021 @ 2000



- Airstrip or Airport
- Dip Site
- Helispot
- Helibase
- Division Break
- Branch Break
- Zone Break
- Incident Command Post
- Drop Point
- Closure
- Camp
- Staging Area
- Lookout
- Hot Spot - Spot Fire
- Value at Risk
- Landmark
- Gate
- Bridge
- Mobile Weather Unit
- Internet Access
- Repeater
- Hazard
- Water Source
- Zone Break
- Transmission Lines
- Aerial Hazard

- Wildfire Daily Fire Perimeter
- Bureau of Indian Affairs (BIA)
- Bureau of Land Management (BLM)
- Bureau of Reclamation (BOR)
- Department of Defense (DOD)
- Local Government
- Other Federal
- State
- US Fish and Wildlife Service (USFWS)
- US Forest Service (USFS)
- Private



| FC Point Type | Label | Latitude WGS84 DDM | Longitude WGS84 DDM |
|-----------------------|---------------------|--------------------|---------------------|
| Drop Point | 501 | 42° 41.036' N | 121° 23.972' W |
| Drop Point | 508 | 42° 38.465' N | 121° 28.398' W |
| Drop Point | 510 | 42° 40.978' N | 121° 27.485' W |
| Helispot | H-1 | 42° 40.831' N | 121° 26.615' W |
| Incident Command Post | ICP | 42° 34.070' N | 121° 51.829' W |
| Dip Site | Yamsay Ranch Dip | 42° 43.960' N | 121° 25.478' W |
| Dip Site | Wild Billy Lake Dip | 42° 30.178' N | 121° 19.110' W |
| Drop Point | 263 | 42° 34.453' N | 121° 29.891' W |
| Drop Point | 264 | 42° 35.082' N | 121° 28.378' W |
| Drop Point | 265 | 42° 35.267' N | 121° 27.528' W |
| Drop Point | 266 | 42° 35.593' N | 121° 26.596' W |
| Drop Point | 270 | 42° 34.260' N | 121° 26.061' W |
| Drop Point | 511 | 42° 43.243' N | 121° 26.589' W |
| Drop Point | 60 | 42° 30.820' N | 121° 12.016' W |
| Drop Point | 65 | 42° 27.401' N | 121° 05.661' W |
| Drop Point | 63 | 42° 35.604' N | 121° 05.214' W |
| Drop Point | 1 | 42° 30.716' N | 121° 15.987' W |
| Drop Point | 64 | 42° 30.540' N | 121° 05.940' W |
| Dip Site | Hawk Lake | 42° 37.218' N | 121° 38.101' W |
| Dip Site | Gearhart | 42° 31.794' N | 120° 51.582' W |
| Drop Point | 504 | 42° 40.915' N | 121° 26.623' W |
| Dip Site | Wire dip | 42° 46.879' N | 121° 03.432' W |
| Drop Point | 401 | 42° 42.696' N | 121° 21.558' W |
| Drop Point | 405 | 42° 49.517' N | 121° 11.174' W |
| Drop Point | 409 | 42° 51.443' N | 121° 09.263' W |
| Drop Point | 75 | 42° 25.779' N | 120° 57.969' W |
| Drop Point | 1000 | 42° 47.169' N | 120° 57.880' W |
| Drop Point | 600 | 42° 42.840' N | 120° 53.245' W |
| Helibase | Lakeview Helibase | 42° 09.505' N | 120° 24.709' W |
| Drop Point | 402 | 42° 43.589' N | 121° 23.756' W |
| Drop Point | 403 | 42° 44.794' N | 121° 22.589' W |
| Dip Site | Moondance | 42° 39.075' N | 121° 18.163' W |
| Dip Site | Little Dam | 42° 43.950' N | 121° 25.471' W |
| Helispot | H-5 | 42° 43.362' N | 121° 26.533' W |
| Helispot | H-2 | 42° 38.333' N | 121° 28.681' W |
| Helispot | H-20 | 42° 52.279' N | 121° 07.322' W |
| Helispot | H-3 | 42° 34.629' N | 121° 26.326' W |
| Drop Point | 408 | 42° 43.922' N | 121° 19.988' W |
| Drop Point | 404 | 42° 44.859' N | 121° 18.783' W |
| Drop Point | 605 | 42° 42.446' N | 120° 54.156' W |
| Drop Point | 410 | 42° 51.257' N | 121° 09.439' W |
| Drop Point | 420 | 42° 54.915' N | 121° 06.529' W |
| Drop Point | 430 | 42° 48.868' N | 121° 09.476' W |
| Drop Point | 425 | 42° 46.673' N | 121° 11.424' W |
| Drop Point | 435 | 42° 54.000' N | 121° 03.574' W |
| Drop Point | 407 | 43° 07.315' N | 121° 03.365' W |
| Dip Site | House | 42° 22.976' N | 120° 51.871' W |
| Dip Site | L Pond | 42° 46.210' N | 121° 16.242' W |
| Dip Site | Cabin | 42° 29.196' N | 120° 40.282' W |
| Incident Command Post | Lakeview | 42° 11.166' N | 120° 21.006' W |
| Drop Point | 655 | 42° 48.598' N | 120° 59.561' W |
| Drop Point | 650 | 42° 47.016' N | 121° 04.129' W |
| Drop Point | 415 | 42° 52.221' N | 121° 08.874' W |
| Drop Point | 810 | 43° 01.774' N | 120° 47.447' W |
| Drop Point | 800 | 42° 59.421' N | 120° 46.624' W |
| Lookout | | 42° 46.696' N | 121° 17.280' W |
| Drop Point | 620 | 42° 48.420' N | 120° 47.571' W |
| Drop Point | 640 | 42° 46.551' N | 120° 46.987' W |
| Drop Point | 630 | 42° 45.547' N | 120° 46.544' W |
| Dip Site | South Fork Dip | 42° 25.135' N | 120° 47.888' W |
| Drop Point | 406 | 42° 50.416' N | 121° 10.055' W |
| Helibase | Whiskey Creek | 42° 24.682' N | 121° 21.313' W |
| Dip Site | Dairy Creek | 42° 28.421' N | 120° 40.289' W |
| Drop Point | 417 | 42° 46.674' N | 121° 15.767' W |
| Drop Point | 82 | 42° 27.195' N | 120° 46.940' W |
| Dip Site | Campbell | 42° 33.732' N | 120° 45.276' W |
| Drop Point | 436 | 42° 53.325' N | 121° 03.086' W |
| Drop Point | 418 | 42° 48.161' N | 121° 16.552' W |
| Drop Point | 419 | 42° 49.023' N | 121° 15.243' W |
| Helispot | H-22 | 42° 51.422' N | 121° 02.148' W |
| Helispot | H-21 | 42° 53.993' N | 121° 04.755' W |
| Helispot | H-23 | 42° 48.800' N | 120° 59.648' W |
| Dip Site | Split | 42° 49.450' N | 120° 53.570' W |
| Drop Point | 656 | 42° 49.376' N | 121° 00.096' W |
| Drop Point | 623 | 42° 52.522' N | 120° 52.125' W |