

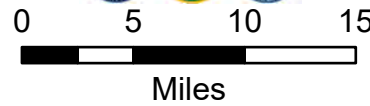
Pilot Map

7/23/2021

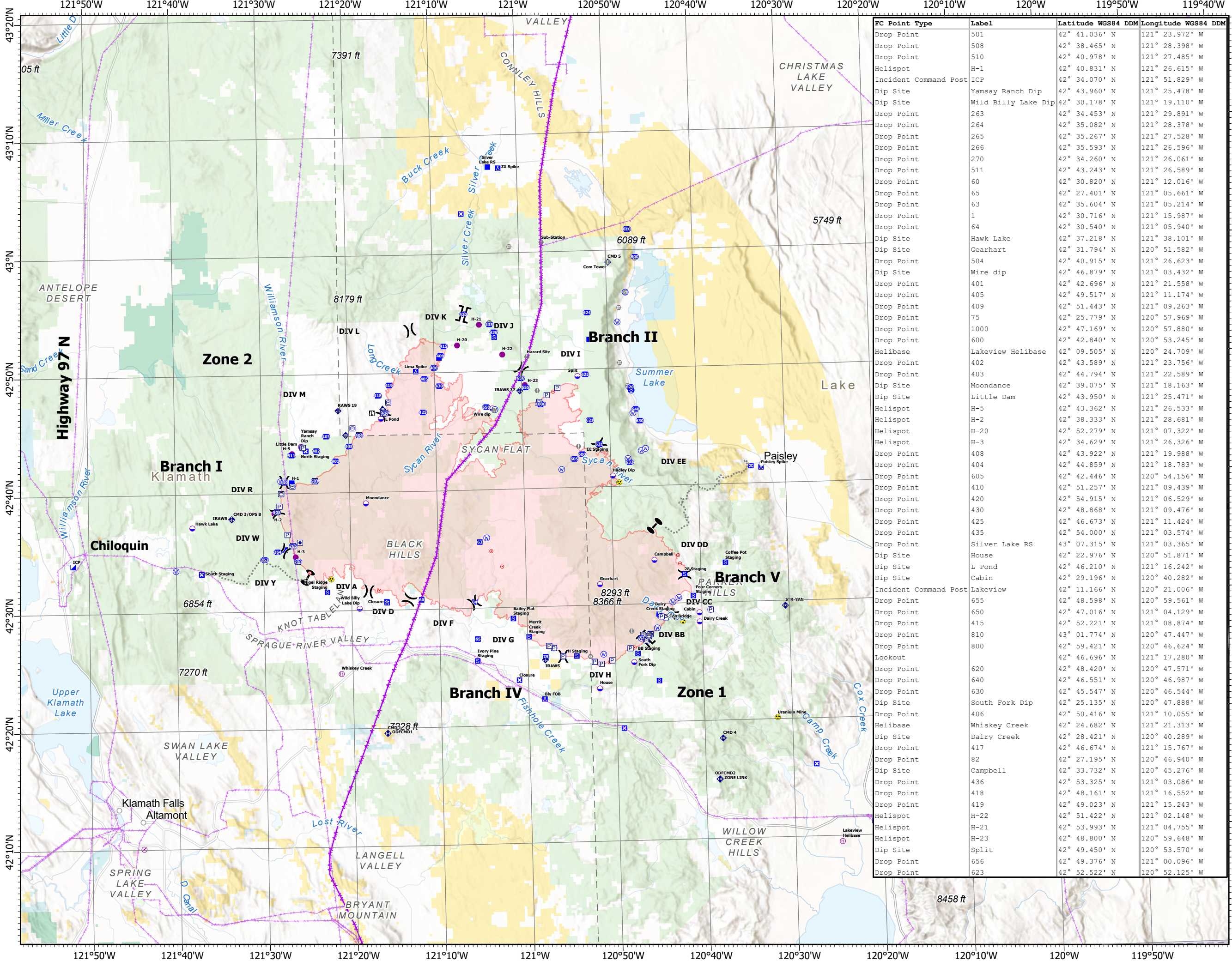
Bootleg Fire

OR-FWF-210321

399,359 acres at 07/21/2021 @ 2000



- Airstrip or Airport
- Dip Site
- Helispot
- Helibase
- Division Break
- Branch Break
- Zone Break
- Incident Command Post
- Drop Point
- Closure
- Camp
- Staging Area
- Lookout
- Hot Spot - Spot Fire
- Value at Risk
- Landmark
- Gate
- Bridge
- Mobile Weather Unit
- Internet Access
- Repeater
- Hazard
- Water Source
- Zone Break
- Transmission Lines
- Aerial Hazard
- Wildfire Daily Fire Perimeter
- Bureau of Indian Affairs (BIA)
- Bureau of Land Management (BLM)
- Bureau of Reclamation (BOR)
- Department of Defense (DOD)
- Local Government
- Other Federal
- State
- US Fish and Wildlife Service (USFWS)
- US Forest Service (USFS)
- Private



FC Point Type	Label	Latitude WGS84 DDM	Longitude WGS84 DDM
Drop Point	501	42° 41.036' N	121° 23.972' W
Drop Point	508	42° 38.465' N	121° 28.398' W
Drop Point	510	42° 40.978' N	121° 27.485' W
Helispot	H-1	42° 40.831' N	121° 26.615' W
Incident Command Post	ICP	42° 34.070' N	121° 51.829' W
Dip Site	Yamsay Ranch Dip	42° 43.960' N	121° 25.478' W
Dip Site	Wild Billy Lake Dip	42° 30.178' N	121° 19.110' W
Drop Point	263	42° 34.453' N	121° 29.891' W
Drop Point	264	42° 35.082' N	121° 28.378' W
Drop Point	265	42° 35.267' N	121° 27.528' W
Drop Point	266	42° 35.593' N	121° 26.596' W
Drop Point	270	42° 34.260' N	121° 26.061' W
Drop Point	511	42° 43.243' N	121° 26.589' W
Drop Point	60	42° 30.820' N	121° 12.016' W
Drop Point	65	42° 27.401' N	121° 05.661' W
Drop Point	63	42° 35.604' N	121° 05.214' W
Drop Point	1	42° 30.716' N	121° 15.987' W
Drop Point	64	42° 30.540' N	121° 05.940' W
Dip Site	Hawk Lake	42° 37.218' N	121° 38.101' W
Dip Site	Gearhart	42° 31.794' N	120° 51.582' W
Drop Point	504	42° 40.915' N	121° 26.623' W
Dip Site	Wire dip	42° 46.879' N	121° 03.432' W
Drop Point	401	42° 42.696' N	121° 21.558' W
Drop Point	405	42° 49.517' N	121° 11.174' W
Drop Point	409	42° 51.443' N	121° 09.263' W
Drop Point	75	42° 25.779' N	120° 57.969' W
Drop Point	1000	42° 47.169' N	120° 57.880' W
Drop Point	600	42° 42.840' N	120° 53.245' W
Helibase	Lakeview Helibase	42° 09.505' N	120° 24.709' W
Drop Point	402	42° 43.589' N	121° 23.756' W
Drop Point	403	42° 44.794' N	121° 22.589' W
Dip Site	Moondance	42° 39.075' N	121° 18.163' W
Dip Site	Little Dam	42° 43.950' N	121° 25.471' W
Helispot	H-5	42° 43.362' N	121° 26.533' W
Helispot	H-2	42° 38.333' N	121° 28.681' W
Helispot	H-20	42° 52.279' N	121° 07.322' W
Helispot	H-3	42° 34.629' N	121° 26.326' W
Drop Point	408	42° 43.922' N	121° 19.988' W
Drop Point	404	42° 44.859' N	121° 18.783' W
Drop Point	605	42° 42.446' N	120° 54.156' W
Drop Point	410	42° 51.257' N	121° 09.439' W
Drop Point	420	42° 54.915' N	121° 06.529' W
Drop Point	430	42° 48.868' N	121° 09.476' W
Drop Point	425	42° 46.673' N	121° 11.424' W
Drop Point	435	42° 54.000' N	121° 03.574' W
Drop Point	435	42° 07.315' N	121° 03.365' W
Dip Site	House	42° 22.976' N	120° 51.871' W
Dip Site	L Pond	42° 46.210' N	121° 16.242' W
Dip Site	Cabin	42° 29.196' N	120° 40.282' W
Incident Command Post	Lakeview	42° 11.166' N	120° 21.006' W
Drop Point	655	42° 48.598' N	120° 59.561' W
Drop Point	650	42° 47.016' N	121° 04.129' W
Drop Point	415	42° 52.221' N	121° 08.874' W
Drop Point	810	43° 01.774' N	120° 47.447' W
Drop Point	800	42° 59.421' N	120° 46.624' W
Lookout		42° 46.696' N	121° 17.280' W
Drop Point	620	42° 48.420' N	120° 47.571' W
Drop Point	640	42° 46.551' N	120° 46.987' W
Drop Point	630	42° 45.547' N	120° 46.544' W
Dip Site	South Fork Dip	42° 25.135' N	120° 47.888' W
Drop Point	406	42° 50.416' N	121° 10.055' W
Helibase	Whiskey Creek	42° 24.682' N	121° 21.313' W
Dip Site	Dairy Creek	42° 28.421' N	120° 40.289' W
Drop Point	417	42° 46.674' N	121° 15.767' W
Drop Point	82	42° 27.195' N	120° 46.940' W
Dip Site	Campbell	42° 33.732' N	120° 45.276' W
Drop Point	436	42° 53.325' N	121° 03.086' W
Drop Point	418	42° 48.161' N	121° 16.552' W
Drop Point	419	42° 49.023' N	121° 15.243' W
Helispot	H-22	42° 51.422' N	121° 02.148' W
Helispot	H-21	42° 53.993' N	121° 04.755' W
Helispot	H-23	42° 48.800' N	120° 59.648' W
Dip Site	Split	42° 49.450' N	120° 53.570' W
Drop Point	656	42° 49.376' N	121° 00.096' W
Drop Point	623	42° 52.522' N	120° 52.125' W