

# Air Ops

7/28/2021

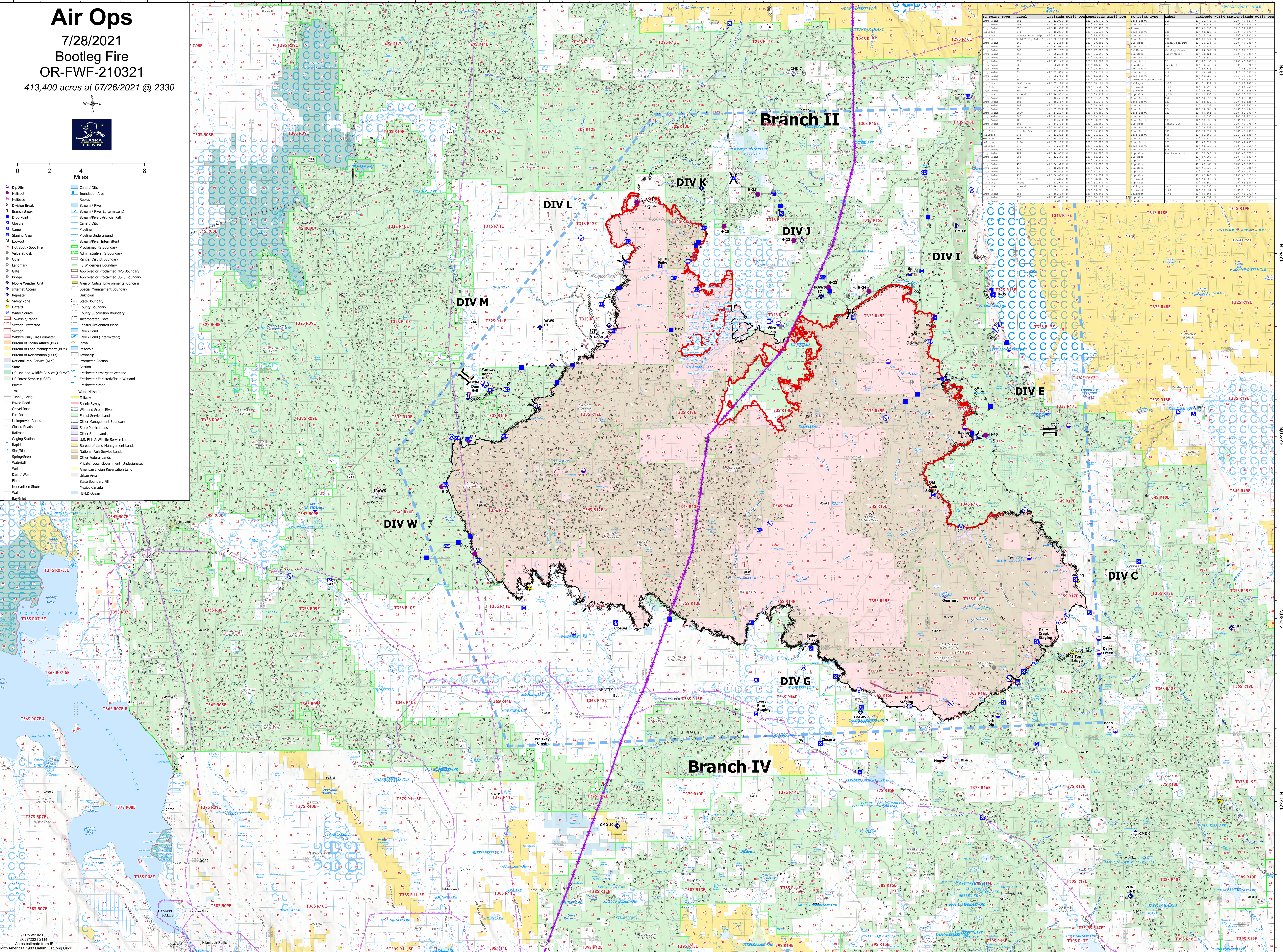
Bootleg Fire

OR-FWF-210321

413,400 acres at 07/26/2021 @ 2330



- Dip Site
- Helibase
- Division Break
- Branch Break
- Drop Point
- Closure
- Camp
- Staging Area
- Lockout
- Hot Spot - Spot Fire
- Value at Risk
- Other
- Landmark
- Gate
- Mobile Weather Unit
- Internet Access
- Repeater
- Safety Zone
- Hazard
- Water Source
- Section
- Wildfire Daily Fire Perimeter
- Bureau of Indian Affairs (BIA)
- Bureau of Land Management (BLM)
- National Park Service (NPS)
- State
- US Fish and Wildlife Service (USFWS)
- US Forest Service (USFS)
- Private
- Trail
- Tunnel, Bridge
- Paved Road
- Gravel Road
- Dirt Roads
- Unimproved Roads
- Closed Roads
- Railroad
- Gaging Station
- Sink/Rise
- Spring/Seep
- Waterfall
- Well
- Dam / Weir
- Flume
- Nonathen Shore
- Wall
- Bay/Inlet
- Canal / Ditch
- Inundation Area
- Rapids
- Stream / River
- Stream / River (Intermittent)
- Stream/River; Artificial Path
- Canal / Ditch
- Pipeline
- Pipeline Underground
- Stream/River Interment
- Proclaimed FS Boundary
- Administrative FS Boundary
- Ranger District Boundary
- FS Wilderness Boundary
- Approved or Proclaimed NPS Boundary
- Approved or Proclaimed USFS Boundary
- Area of Critical Environmental Concern
- Special Management Boundary
- Unknown
- State Boundary
- County Boundary
- County Subdivision Boundary
- Incorporated Place
- Census Designated Place
- Section
- Lake / Pond
- Lake / Pond (Intermittent)
- Reservoir
- Playa
- Township
- Protected Section
- Section
- Wild and Scenic River
- Forest Service Land
- Other Management Boundary
- State Public Lands
- Other State Lands
- US Fish & Wildlife Service Lands
- Bureau of Land Management Lands
- National Park Service Lands
- Other Federal Lands
- Private; Local Government; Undesignated
- American Indian Reservation Land
- Urban Area
- State Boundary Fill
- Mexico Canada
- HRLD Ocean



| PC Point Type | Label | Latitude WGS84 | Longitude WGS84 | PC Point Type | Label | Latitude WGS84 | Longitude WGS84 |
|---------------|-------|----------------|-----------------|---------------|-------|----------------|-----------------|
| Drop Point    | 001   | 42.18147° N    | 121.28147° W    | Drop Point    | 002   | 42.18147° N    | 121.28147° W    |
| Drop Point    | 003   | 42.18147° N    | 121.28147° W    | Drop Point    | 004   | 42.18147° N    | 121.28147° W    |
| Drop Point    | 005   | 42.18147° N    | 121.28147° W    | Drop Point    | 006   | 42.18147° N    | 121.28147° W    |
| Drop Point    | 007   | 42.18147° N    | 121.28147° W    | Drop Point    | 008   | 42.18147° N    | 121.28147° W    |
| Drop Point    | 009   | 42.18147° N    | 121.28147° W    | Drop Point    | 010   | 42.18147° N    | 121.28147° W    |
| Drop Point    | 011   | 42.18147° N    | 121.28147° W    | Drop Point    | 012   | 42.18147° N    | 121.28147° W    |
| Drop Point    | 013   | 42.18147° N    | 121.28147° W    | Drop Point    | 014   | 42.18147° N    | 121.28147° W    |
| Drop Point    | 015   | 42.18147° N    | 121.28147° W    | Drop Point    | 016   | 42.18147° N    | 121.28147° W    |
| Drop Point    | 017   | 42.18147° N    | 121.28147° W    | Drop Point    | 018   | 42.18147° N    | 121.28147° W    |
| Drop Point    | 019   | 42.18147° N    | 121.28147° W    | Drop Point    | 020   | 42.18147° N    | 121.28147° W    |
| Drop Point    | 021   | 42.18147° N    | 121.28147° W    | Drop Point    | 022   | 42.18147° N    | 121.28147° W    |
| Drop Point    | 023   | 42.18147° N    | 121.28147° W    | Drop Point    | 024   | 42.18147° N    | 121.28147° W    |
| Drop Point    | 025   | 42.18147° N    | 121.28147° W    | Drop Point    | 026   | 42.18147° N    | 121.28147° W    |
| Drop Point    | 027   | 42.18147° N    | 121.28147° W    | Drop Point    | 028   | 42.18147° N    | 121.28147° W    |
| Drop Point    | 029   | 42.18147° N    | 121.28147° W    | Drop Point    | 030   | 42.18147° N    | 121.28147° W    |
| Drop Point    | 031   | 42.18147° N    | 121.28147° W    | Drop Point    | 032   | 42.18147° N    | 121.28147° W    |
| Drop Point    | 033   | 42.18147° N    | 121.28147° W    | Drop Point    | 034   | 42.18147° N    | 121.28147° W    |
| Drop Point    | 035   | 42.18147° N    | 121.28147° W    | Drop Point    | 036   | 42.18147° N    | 121.28147° W    |
| Drop Point    | 037   | 42.18147° N    | 121.28147° W    | Drop Point    | 038   | 42.18147° N    | 121.28147° W    |
| Drop Point    | 039   | 42.18147° N    | 121.28147° W    | Drop Point    | 040   | 42.18147° N    | 121.28147° W    |
| Drop Point    | 041   | 42.18147° N    | 121.28147° W    | Drop Point    | 042   | 42.18147° N    | 121.28147° W    |
| Drop Point    | 043   | 42.18147° N    | 121.28147° W    | Drop Point    | 044   | 42.18147° N    | 121.28147° W    |
| Drop Point    | 045   | 42.18147° N    | 121.28147° W    | Drop Point    | 046   | 42.18147° N    | 121.28147° W    |
| Drop Point    | 047   | 42.18147° N    | 121.28147° W    | Drop Point    | 048   | 42.18147° N    | 121.28147° W    |
| Drop Point    | 049   | 42.18147° N    | 121.28147° W    | Drop Point    | 050   | 42.18147° N    | 121.28147° W    |
| Drop Point    | 051   | 42.18147° N    | 121.28147° W    | Drop Point    | 052   | 42.18147° N    | 121.28147° W    |
| Drop Point    | 053   | 42.18147° N    | 121.28147° W    | Drop Point    | 054   | 42.18147° N    | 121.28147° W    |
| Drop Point    | 055   | 42.18147° N    | 121.28147° W    | Drop Point    | 056   | 42.18147° N    | 121.28147° W    |
| Drop Point    | 057   | 42.18147° N    | 121.28147° W    | Drop Point    | 058   | 42.18147° N    | 121.28147° W    |
| Drop Point    | 059   | 42.18147° N    | 121.28147° W    | Drop Point    | 060   | 42.18147° N    | 121.28147° W    |
| Drop Point    | 061   | 42.18147° N    | 121.28147° W    | Drop Point    | 062   | 42.18147° N    | 121.28147° W    |
| Drop Point    | 063   | 42.18147° N    | 121.28147° W    | Drop Point    | 064   | 42.18147° N    | 121.28147° W    |
| Drop Point    | 065   | 42.18147° N    | 121.28147° W    | Drop Point    | 066   | 42.18147° N    | 121.28147° W    |
| Drop Point    | 067   | 42.18147° N    | 121.28147° W    | Drop Point    | 068   | 42.18147° N    | 121.28147° W    |
| Drop Point    | 069   | 42.18147° N    | 121.28147° W    | Drop Point    | 070   | 42.18147° N    | 121.28147° W    |
| Drop Point    | 071   | 42.18147° N    | 121.28147° W    | Drop Point    | 072   | 42.18147° N    | 121.28147° W    |
| Drop Point    | 073   | 42.18147° N    | 121.28147° W    | Drop Point    | 074   | 42.18147° N    | 121.28147° W    |
| Drop Point    | 075   | 42.18147° N    | 121.28147° W    | Drop Point    | 076   | 42.18147° N    | 121.28147° W    |
| Drop Point    | 077   | 42.18147° N    | 121.28147° W    | Drop Point    | 078   | 42.18147° N    | 121.28147° W    |
| Drop Point    | 079   | 42.18147° N    | 121.28147° W    | Drop Point    | 080   | 42.18147° N    | 121.28147° W    |
| Drop Point    | 081   | 42.18147° N    | 121.28147° W    | Drop Point    | 082   | 42.18147° N    | 121.28147° W    |
| Drop Point    | 083   | 42.18147° N    | 121.28147° W    | Drop Point    | 084   | 42.18147° N    | 121.28147° W    |
| Drop Point    | 085   | 42.18147° N    | 121.28147° W    | Drop Point    | 086   | 42.18147° N    | 121.28147° W    |
| Drop Point    | 087   | 42.18147° N    | 121.28147° W    | Drop Point    | 088   | 42.18147° N    | 121.28147° W    |
| Drop Point    | 089   | 42.18147° N    | 121.28147° W    | Drop Point    | 090   | 42.18147° N    | 121.28147° W    |
| Drop Point    | 091   | 42.18147° N    | 121.28147° W    | Drop Point    | 092   | 42.18147° N    | 121.28147° W    |
| Drop Point    | 093   | 42.18147° N    | 121.28147° W    | Drop Point    | 094   | 42.18147° N    | 121.28147° W    |
| Drop Point    | 095   | 42.18147° N    | 121.28147° W    | Drop Point    | 096   | 42.18147° N    | 121.28147° W    |
| Drop Point    | 097   | 42.18147° N    | 121.28147° W    | Drop Point    | 098   | 42.18147° N    | 121.28147° W    |
| Drop Point    | 099   | 42.18147° N    | 121.28147° W    | Drop Point    | 100   | 42.18147° N    | 121.28147° W    |