

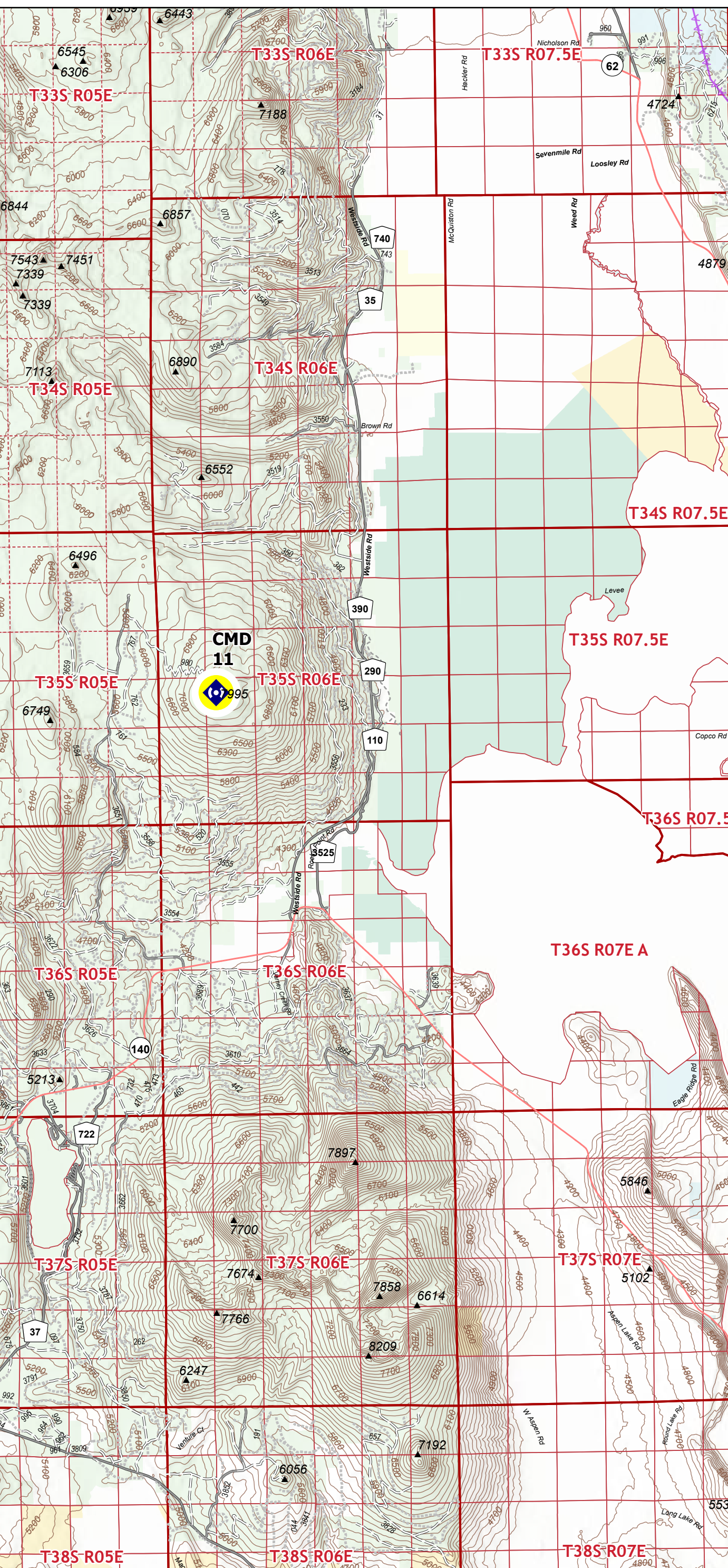
Communications

7/28/2021
 Bootleg Fire
 OR-FWF-210321
 413,400 acres at 07/26/2021 @ 2330



0 3.25 6.5 13 Miles

- Airstrip or Airport
- Dip Site
- Helispot
- Helibase
- ⌋ Branch Break
- ⌋ Incident Command Post
- ⌋ Drop Point
- ⌋ Camp
- ⌋ Staging Area
- ⌋ Lookout
- Hot Spot - Spot Fire
- Value at Risk
- Other
- Landmark
- Gate
- Bridge
- ◆ Mobile Weather Unit
- ◆ Internet Access
- ◆ Repeater
- ◆ Safety Zone
- ◆ Hazard
- ◆ Water Source
- ⌋ Completed Dozer Line
- ⌋ Completed Mixed Construction Line
- ⌋ Completed Plow Line
- ⌋ Completed Road as Line
- ⌋ Planned Dozer Line
- ⌋ Planned Hand Line
- ⌋ Planned Mixed Construction Line
- ⌋ Planned Road as Line
- Planned Secondary Line
- Access or Improved Road
- Other
- Repair Line
- Aerial Hazard
- Temporary Flight Restriction
- Fire Edge
- Contained Line
- Wildfire Daily Fire Perimeter
- Transmission Lines
- Zone Break
- Primary Highway
- Secondary Highway
- Paved Road
- Gravel Road
- Dirt Roads
- Unimproved Roads
- Closed Roads
- Trail
- Township/Range
- Section Protracted
- Section
- Department Of Defense (DOD)
- Bureau of Land Management (BLM)
- National Park Service (NPS)
- US Forest Service (USFS)
- US Fish and Wildlife (USFW)
- Bureau of Reclamation (USBR)
- Bureau of Indian Affairs (BIA)
- Other Federal
- State
- Local
- Private or Unknown



FC Point Type	Label	Latitude WGS84 DDM	Longitude WGS84 DDM
Repeater	CMD 10	42° 19.581' N	121° 16.176' W
Repeater	CMD 11	42° 30.815' N	122° 08.761' W
Repeater	CMD 12/OPS B	42° 37.907' N	121° 33.569' W
Repeater	CMD 7	43° 00.554' N	121° 01.900' W
Repeater	CMD 8	42° 51.999' N	120° 50.062' W
Repeater	CMD 9	42° 18.513' N	120° 37.970' W
Repeater	ODFCMD1	42° 19.581' N	121° 16.176' W
Repeater	ODFCMD2	42° 15.050' N	120° 38.455' W
Repeater	STR-YAN	42° 29.596' N	120° 30.451' W
Repeater	ZONE LINK	42° 15.050' N	120° 38.455' W